

# BULLETIN



HOUSTON GEOLOGICAL SOCIETY

Houston, Texas

Volume 3, No. 1

September 1960

# Houston Geological Society

## OFFICERS

President .....	<i>William A. Gorman</i> .....	FA 3-0346
1st Vice President .....	<i>Philip R. Allin</i> .....	CA 5-0111
2nd Vice President .....	<i>Austin D. Brixey, Jr.</i> .....	CA 7-2181
Secretary .....	<i>Clark Edgecomb, Jr.</i> .....	WA 8-2511
Treasurer .....	<i>Thomas M. Burke</i> .....	CA 5-0331

## EXECUTIVE COMMITTEEMEN

<i>Carey Croneis</i>	<i>Edd R. Turner, Jr., Ex-Officio</i>	<i>Ben F. Morgan</i>
<i>Shirley L. Mason</i>		<i>Marion S. Roberts</i>

## COMMITTEE CHAIRMEN

### STANDING COMMITTEES

Finance .....	<i>Bruce Forney</i> .....	FA 3-0367
Publications .....	<i>Philip R. Allin</i> .....	CA 5-0111
Technical Program .....	<i>Austin D. Brixey, Jr.</i> .....	CA 7-2181
Awards & Loans .....	<i>Jack Colle</i> .....	CA 7-6266
Personnel Placement .....	<i>A.G. Starr</i> .....	CA 5-4411
Public Relations .....	<i>Ira N. Patterson, Jr.</i> .....	CA 5-4411
Research & Study .....	<i>William R. Walton</i> .....	CA 7-4371
Boy Scout .....	<i>Lowell K. Mower</i> .....	JA 4-8628
Entertainment .....	<i>Roy M. Rhodes</i> .....	RI 7-1300

### SPECIAL COMMITTEES

Ballot .....	<i>Benjamin T. Simmons</i> .....	FA 3-0493
Convention Preparation .....	<i>W.A. Thomas</i> .....	CA 2-9721
Distribution of Publications .....	<i>I.W. Norman</i> .....	CA 3-4901
Engineers Council .....	<i>Kenneth A. Payne</i> .....	CA 5-3040
	<i>Howard Schoenike</i> .....	MO 5-7079
Exhibits G.C.A.G.S.		
A.A.P.G. ....	<i>B. Otto Pixler</i> .....	JA 4-6381
Foreign Papers .....	<i>Richard B. Hohlt</i> .....	CA 5-0517
Library & Academic Liaison .....	<i>George C. Hardin, Jr.</i> .....	MO 7-5601
Membership .....	<i>Judd H. Oualline</i> .....	CA 8-6321
Preservation of Samples & Cores ...	<i>Charles W. Stuckey, Jr.</i> .....	JA 9-4821
Remembrance .....	<i>John L.P. Campbell</i> .....	WA 8-5311
Transportation .....	<i>Carleton D. Speed, Jr.</i> .....	CA 4-2523
Advisors to Museum of Natural		
History .....	<i>E.W. Buck</i> .....	CA 8-5161
	<i>Fred M. Schall, Jr.</i> .....	CA 2-9481
CGAGS Representative .....	<i>Wendell L. Lewis</i> .....	CA 3-4901

THE



BULLETIN

---

THIS MONTH

VOLUME 3

NUMBER 1

Meeting Notice .....	Page 2
Items from Editor's Desk .....	Page 4
Committee Reports .....	Page 7
News of Members .....	Page 8
News of Other Societies .....	Page 9
GeoScience Notes .....	Page 15

---

THE BULLETIN OF THE HOUSTON GEOLOGICAL SOCIETY

Office -234 Esperson Bldg. - Houston 2, Texas - FA 3-9309

Subscription Price \$3.00 per year.

Published monthly, September to June by

CARDINAL PRINTING AND LETTER SERVICE, INC.

Editor .....	William A. Petersen, P. O. Box 2197 .....	CA 5-1511 ext. 874
Ass't. Editor .....	Arthur S. Dickinson, Lion Oil Co. ....	CA 3-4011
Managing Editor .....	Neil E. Hanson, MPS Production Co. ....	CA 4-7871

## MEETING NOTICE

Volume 3, No. 1

September

### FIRST REGULAR MEETING - SEPTEMBER 12

The first regular meeting for the 1960-1961 year will be held on Monday evening, September 12, 1960, on the 10th floor of the Houston Club. The social hour will begin at 5:15 p.m., dinner at 6:00 p.m.

MR. ED J. HAMNER, Director, Humble Division, Humble Oil & Refining Company, will speak before the Society at this meeting. His subject: "The Climate of the Oil Industry and What it Means to Geologists." Much in demand, and always a popular speaker, Mr. Hamner brings an intimate knowledge and wide personal experience to bear on a timely subject which promises to be a real early season highlight in this year's very fine program.

### SCHEDULE OF FUTURE MEETINGS

The next regular meeting will be held on October 10, 1960. DR. D. J. DOEGLAS, Professor in geology and mineralogy at the University of Agriculture at Wageningen, Holland, will present the paper "Sedimentological Studies of Recent and Old Sediments, A Comparison."

Other regular meetings will be held on the following dates:

November 14, 1960	March 13, 1961
December 5, 1960	April 10, 1961
January 9, 1961	May 8, 1961
February 13, 1961	June 12, 1961

---

---

NOTICE

NOTICE

NOTICE

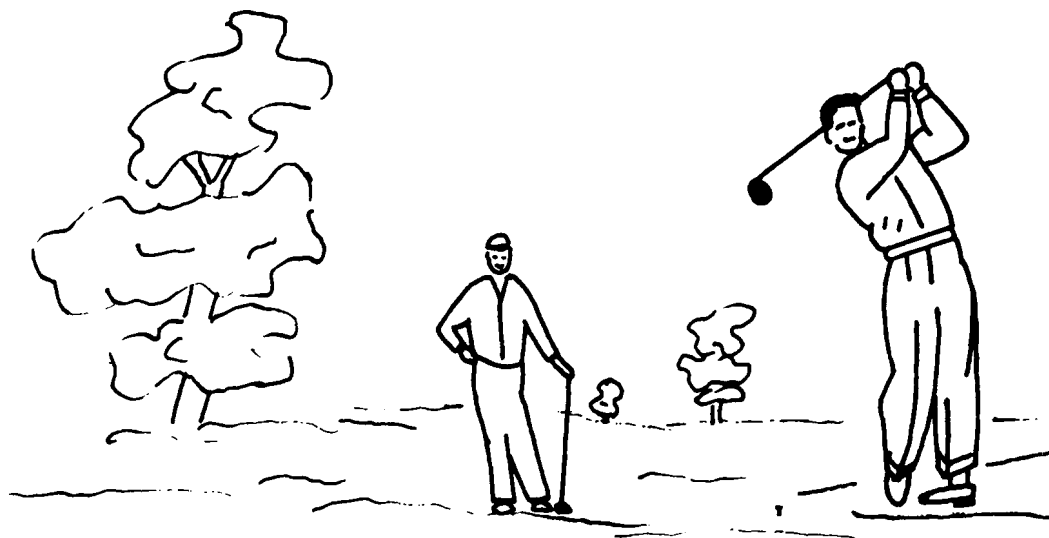
### 1960-1961 DUES NOW PAYABLE

Make your remittance in the amount of \$4.50 payable to the Houston Geological Society. Mail to 234 Esperson Building, Houston 2, Texas.

---

---

# Houston Geological Society GOLF TOURNAMENT



**River Bend Country Club**

***September 30, 1960***

**ATTENTION ALL GOLFERS !!**

**Make reservation for tee off time by calling**

**Mrs Raye Edger**

**RI7-1300 Ex. 86**

**Tee off time from 8:30 AM till 1 PM**

## — Items From The Editor's Desk

### KICK-OFF

Volume 3, Number 1, of the Bulletin heralds another new year for the Houston Geological Society - its 38th. The format of your Bulletin has undergone a face lifting over the summer months; more important, a new slate of officers has been installed and committee chairmen elected. Officers for 1960-61 are:

President	William A. Gorman
1st Vice President	Philip R. Allin
2nd Vice President	Austin D. Brixey, Jr.
Secretary	Clark Edgecomb, Jr.
Treasurer	Thomas M. Burke
Advisory Committee	Carey Croneis
	Ben F. Morgan
	Marion S. Roberts
	Shirley L. Mason

After this issue, due to the impending transfer of ye ed from the city, the Bulletin will have a new editor, Wm R. Canada, Mobil Oil. Assistant Editor is Art Dickinson, Lion Oil Co. These men will need your help - news of members, committee reports, contributions to Geo Science Notes. Give them your continued support.

### FA-3-9309

This is the phone number for the Houston Geological Society. Membership files, publication of the Bulletin, sale of Society publications - in short, the business of the Society is handled for us by the staff of Cardinal Printing Company. Address inquiries to 234 Esperson Building, Houston 2, Texas.

### CALENDAR NOTE: G. C. A. G. S.

October 19-22, 1960. This is the date for the tenth annual meeting of the Gulf Coast Association of Geological Societies to be held this year at Biloxi, Mississippi. The meeting has been designated a regional meeting of the A. A. P. G.

Tentatively scheduled is a pre-convention cocktail party, Wednesday evening; seafood jamboree, Thursday; Convention dance Friday night; and post-convention field trip to south Mississippi and Alabama localities Saturday October 22nd. The Buena Vista Hotel has been designated convention headquarters.

H.G.S. appointees to the Gulf Coast Association for 1960 are: Representative, Wendell Lewis; Alternate, Art Dickinson; Assistant Editor, G. R. Gould; Assistant Editor (Advertising), Douglas Bacon.

## FORE!

Dusty Rhodes, entertainment chairman, has announced plans for this fall's bigger and better golf tourney. Come on out, all you golfers and duffers. PRIZES.....BEER!

Date: September 30, 1960  
Place: River Bend Country Club  
Tee-off: 8:30 a.m. 'til 1 p.m.

Make reservation for tee-off time by calling Mrs. Raye Edger, RI-7-1300, extension 86.

## STAFF

Art Dickinson, assistant Bulletin editor, acknowledges thanks to the following members who have agreed to serve as reporters for the 1960-61 year. If you have news of members - transfers, promotions, awards, sickness - pass it on to one of these men who will be responsible for making this section a vitally interesting part of the Bulletin.

J. D. "Denny" Bartell ..... CA 5-0111  
Marion M. Hooks..... JA 9-4821  
Claude D. Pressler ..... CA 4-9241  
Roy M. "Dusty" Rhodes..... RI 7-1300  
James A. Wheeler ..... FA 3-1618

## NEVER TOO OLD TO...

DeWitt C. Van Siclen, Chairman of the Department of Geology, University of Houston, announces an evening program leading to the Master's degree in Geology.

All necessary courses leading to an M.S. degree in Geology are now scheduled in the evening at least every other year, with the prescribed field trips limited to 3 days over week-ends. Additional course work may be substituted for the thesis by those who will have completed three years of satisfactory professional experience in geologic work. The Master's degree must be completed within eight consecutive years after enrollment in graduate work.

Admission to the graduate school requires a Bachelor's degree with a minimum undergraduate grade point average of 2.5 (where C = 2) earned in an accredited institution. The M.S. degree requires 36 hours without a thesis or 24 course credit hours plus a thesis; a maximum of 6 semester hours of graduate work may be transferred from other institutions if the grade is B or higher.

Applications and transcripts, accompanied by a fee of \$5.00, must be approved and in the graduate office before September 12 for the Fall Semester and January 15 for the Spring Semester. Formal application for admission should be made directly to the Dean of the Graduate Division, University of Houston.

Evening courses scheduled for the fall semester 1960 include: Sedimentation and Stratigraphy; Applied Geophysics; Paleozoic Stratigraphy; Optical Mineralogy; and Tectonics. A Saturday morning class in Subsurface Geology is offered.

## WE ARE PROUD

The Houston Geological Society points with pride to its publications, many of which are still available. Publications list is included at the end of this issue of the Bulletin which may be used as an order blank to complete your library of these important works. Most recent of the publications is:

- 1960    Guidebook, Annual Field Trip, HGS & SEPM. "Jackson Group, Catahoula and Oakville Formations and Associated Structures of Northeastern Grimes County, Texas" by William L. Russell (ed note: for report on the trip and review of the guidebook see the Bulletin of the HGS, June 1960.)

## GROUP INSURANCE PROGRAM

Since the inception of our group Accident Insurance Program on November 1, 1959, we have had a good response to this specialty-type coverage which is available to the members of the Society. New members of the Society are eligible for the coverage the first of any month on a pro-rata basis.

The minimum amount of insurance that may be purchased by a member is \$20,000, with a \$10,000 minimum for wives of members. Coverage is available up to a maximum of \$500,000 in \$5,000 increments at the below-mentioned rates.

### PRO RATA PREMIUM SCHEDULE

<u>Effective Date</u>		<u>Premium</u>
October 1st	- Total Premium per \$1,000	\$ .08
November 1st	- "	.90
December 1st	- "	.83
January 1st	- "	.75
February 1st	- "	.68
March 1st	- "	.60
April 1st	- "	.53
May 1st	- "	.45
June 1st	- "	.38
July 1st	- "	.30
August 1st	- "	.23
September 1st	- "	.15
October 1st	- "	.08

Those wishing to enter this program should contact Rathmell & Company, 3700 Montrose Blvd., Houston 6, Texas, for applications in order to effect coverage under this attractive program.



## COMMITTEE REPORTS

### RESEARCH AND STUDY GROUP COMMITTEE

The Research and Study Group Committee is continuing two projects which were begun during 1959. These projects are a geological guidebook to the area within a 100-mile radius of Houston and a survey of the present status of Geological Research in the petroleum industry.

The guidebook will include interesting outcrops and fossil localities such as artifact, micro, macro, vertebrate and plant localities which will be described and located on road maps. Excellent progress is being made and the guidebook should be completed before the first of the year.

The research status questionnaire sent to some 30 petroleum research companies and selected individuals was well received. Sixty-seven percent of the questionnaires sent out were returned. A summary of the status and attitudes toward geological research is being prepared and will be completed in the near future.

The function of the Research and Study Group Committee is being modified for the coming year. In place of attempting detailed projects of a research nature itself, the Committee will now function to stimulate and encourage research projects on specific geological problems to be carried out by Society members or students. The Committee will endeavor to supply advisors, technical help, data, personal contacts with qualified Society members and stimulus to any Society member or student from the Houston area on any geological research project subject to Committee approval. Any Society member who has a "pet project" he has always wanted to look into, or who knows of students or other Society members who have projects needing support, is urged to contact the Committee Chairman, William R. Walton, at CA 7-4371.

This change in function is an attempt to make use of the multitude of technical talent of the Society membership in sponsoring or supporting worthy geological research by individuals.

### PERSONNEL PLACEMENT COMMITTEE

The 1960-61 Personnel Placement Committee is composed of the following:

Mr. A. G. Starr, Chairman  
Humble Oil & Refining Co.  
Room 800, Humble Building  
CA 5-4411, Ext. 606

Mr. Hal H. Bybee  
Continental Oil Company  
1300 Main Street  
CA 5-6941, Ext. 648

Mr. Wendell L. Lewis  
Highland Oil Company  
1201 San Jacinto Building  
CA 3-4901

Mr. T. P. Ellsworth  
Geophysical Service, Inc.  
909 Bank of the Southwest Bldg.  
FA 3-4331

The 1960-1961 Placement Committee stands ready to serve as a counseling group to the many Geology and Geophysics graduates who are currently seeking employment in their chosen profession. The committee will welcome inquiries from any organization seeking the services of these professional people. The committee has a large number of registrants available to any and all who are seeking employees in these fields. Complete files of the registrants are available at the office of the committee chairman.

**Present Active Registrants:**

22	Advanced Degree - No Experience
39	Advanced Degree - Experience in Geology
78	Bachelor Degree - No Experience
51	Bachelor Degree - Experience in Geology
<u>22</u>	Bachelor Degree - Experience in Geophysics
212	Total registered with committee

The 1959-1960 Placement Committee reports that they were able to place some sixty people that were registered with the committee.

## **NEWS . . . . . of members**

I. L. ROBERTS, Schlumberger, transferred to Lafayette.

J. V. SEXTON, Pan American, was promoted from staff geologist to division operations geologist.

Now with Lion Oil's production and exploration department is Wm. R. McCANN, formerly with Texas Eastern Transmission Co.

J. D. NUNNALLY has moved to Dallas in the position of chief geologist for Delhi-Taylor.

In another move GEORGE PICHEL, offshore district geologist for Union Oil of California, reported to Los Angeles as foreign exploration coordinator.

L. F. McCOLLUM, president of Continental Oil, was awarded an honorary doctor of laws degree from Texas Tech. McCollum was commencement speaker.

W. E. TIPTON, Brazos Oil and Gas, was named chief geologist in Houston.

Named New Orleans area exploration manager was J. J. HOHLER, formerly Houston area geologist for Shell Oil.

Coming to Houston from Calgary is HERMAN A. ENGEL, JR., who was named Coordinator of Economics and Evaluation for Union Texas Natural Gas. Engel was formerly manager of the company's Canadian division.

VERNON BOLLETER, Tennessee Gas, can now be reached at Durango, Colorado, following a company move this summer.

HUGH BEACH, formerly in Houston with Texaco, was elected vice president of the AAPG Eastern Section in New York.

Yet another Houston loss over the summer is ANDREW ROWE, JR., senior geologist, Sinclair, moved to Oklahoma City.

Writing from Dhahran (Saudi Arabia) is JOHN S. CRUSE who possibly qualifies as the HGS's most long distance member. John is with Aramco there where he is supervisor of geologic research; his address: Box 1216, Dhahran.

New prospect for membership is JOHN H. WEEMS who has joined the geological staff of Associated Oil and Gas here. Weems served most recently in Oklahoma City with Sohio with whom he had been associated some 10 years.

Added to P.G.A.C.'s force as sales engineer in Houston is CLARENCE ENGELKE.

AL TOLBERT has opened offices as consulting geologist in Room 665-A San Jacinto Building. His phone: CA-8-6174.

BUD SCHULTZ, formerly district geologist in Houston for J. M. Huber Corp. has transferred with his company to Denver.

EDD TURNER, Tidewater, has been promoted from Division Geologist to Assistant Division Exploration Manager.

Returning to Houston after a stint in the Lafayette office is ROGER BRYON, reporting in as district geologist for Union of California.

AUSTIN D. BRIXEY, JR., Houston Division Geologist with Sinclair Oil & Gas Co., has been transferred to Sinclair's Ft. Worth Division as Division Geologist. His office will be in the Ft. Worth National Bank Building. A new prospect for membership in the Society will be Robert P. Harder, who is being transferred from Sinclair's Tulsa office as Austin's replacement.

Among new members are:

Baxter, Adams, Jr.  
Foust, Roscoe T., Jr.  
Hardwick, Paul M., Jr.  
Haskell, Earl H.  
Lea, William T.  
McLeod, Ralph R.  
Mangum, Charles R.  
Mayfield, Jack H., Jr.  
Morris, James H.  
Oakes, Ramsey L.  
Olson, Henry David  
Winters, Rayford W.

Shell Oil Corp.  
Brazos Oil & Gas Company  
Texas National Petroleum  
Tennessee Gas and Oil  
Cities Service Oil Co.  
J. Ray McDermott & Co.  
R. O. Mangum  
Goldston Oil Corp.  
Sohio Petroleum Company  
Pan American Petroleum Corp.  
Shell Development Co.  
Brewster-Bartle Drilling Co.

**NEWS.** . . . . . *of*  
*other societies*

CORPUS ELECTS

Succeeding to office, to man the executive chambers of neighboring Corpus Christi Geological Society for the coming year are:

President.....C. M. Baker, Continental Oil  
1st Vice President...Dale Olson, Pure Oil  
2nd Vice President...J. V. McCullough, Carll Oil  
Secretary.....Mary Magaw, Shell  
Treasurer .....Fred Thompson, Houston Natural Gas

## FOUR CORNERS TRIPS

On October 5-6-7, 1960 the Four Corners Geological Society shall sponsor its 3rd field conference, originating at Moab, Utah.

The all-bus caravan will tour the salt anticlines of the Paradox Basin, the Uncompahgre Uplift, and will visit the site of the oil industry's major 1959 discovery.

Men only; it's a bedroll outing. Transportation, 7 catered meals, guidebook and registration all for \$60. Registration is limited - last chance to apply. Contact Mr. Cole, Ohio Oil Co., 1211 Main Avenue, Durango, Colorado.

## A.A.P.G. NOTES

Not standing still on the simmering front regarding registration of geologists the executive committee has (1) approved preparation of a statement concerning unionization of scientists in reference to an article published in Chemical and Engineering News, (2) concluded that President Parker would reply for A.A.P.G. on proposed "Society for Geological Engineers" in the vein that geologists are as much interested in practical application of their science as are geological engineers, (3) took favorable note of the Urbana meeting on "Professional Geologists Organization" called by a group of Illinois geologists to establish practitioners of this science more firmly in recognized professional status, and (4) arranged for a meeting between officers of A.A.P.G., G.S.A. and S.E.G. to draft counterproposals for reorganization of A.G.I. (ed. note: see Bulletin of the H.G.S., April, 1960, for discussion of the proposed reorganization).

## GEOLOGISTS DISCUSS GAS

The Southwestern Federation of Geological Societies has announced the group's third annual meeting to be held in Abilene, October 12-14, 1960. High ranking authorities on natural gas, including leading geologists, will address the convention.

Among the papers listed in the tentative program are "The Permian System of Texas," by R. C. Moore; "Natural Gas in North America," by B. W. Beebe; and "Natural Gas Potentialities in the Southwest," by members of the firm of DeGolyer & MacNaughton. S. P. Ellison, Jr. will discuss "Geology of North Central Texas," and specific areas and fields in the Southwest will be discussed by other speakers.

## HERE 'TIS

You will want to avail yourself of the special A.A.P.G. member price of \$11.00 for the New Orleans Society's brand new Salt Dome Volume. Sixty South Louisiana salt domes are presented with the following maps and data: Base map with all producing and dry holes located; contours on top of the salt; data on annual and cumulative production of oil and gas; total oil and gas wells; producing zones; deepest section penetrated; operators and market outlet.

**PAN GEO ATLAS CORP.**

-----○-----

**POINDEXTER  
EXPLORATION COMPANY**

-----○-----

**POPE GEOPHYSICAL COMPANY**

-----○-----

**PRECISION  
EXPLORATION COMPANY**

-----○-----

**RESEARCH EXPLORATIONS, INC.**

-----○-----

**ROBERT H. RAY COMPANY**

**SOUTHWESTERN  
INDUSTRIAL ELECTRONICS CO.**

-----○-----

**TAYLOR EXPLORATION CO., INC.**

-----○-----

**TEXAS GAS EXPLORATION  
CORPORATION**

-----○-----

**TEX-TUBE, INC.**

-----○-----

**TIDELANDS EXPLORATION  
COMPANY**

-----○-----

**EDGAR TOBIN AERIAL SURVEYS**

---

**SUPPORT YOUR BULLETIN ADVERTISERS**

---

**L. L. RIDGEWAY COMPANY**

-----○-----

**RINEHART OIL NEWS COMPANY**

-----○-----

**ROGERS GEOPHYSICAL COMPANY**

-----○-----

**OTIS RUSSELL  
DRILLING COMPANY**

-----○-----

**SCHLUMBERGER  
WELL SURVEYING CORP.**

-----○-----

**SEISMOGRAPH  
SERVICE CORPORATION**

**WELEX, INC.**

-----○-----

**WELL LOGGING EQUIPMENT  
MANUFACTURING CO.**

-----○-----

**WILSON STATIONERY  
AND PRINTING**

-----○-----

**WILSON SUPPLY COMPANY**

-----○-----

**HOUSTON BLUE PRINT  
& STATIONERY COMPANY**

-----○-----

**THE GEOPHYSICAL DIRECTORY**

# PROFESSIONAL DIRECTORY

Space for Professional Cards of Members

---

R. P. AKKERMAN  
Geologist EXPLORATION Engineer  
Review of Subsurface Data  
3425 Bradford Place MA 3-4327  
Houston 25, Texas

---

E. J. BARRAGY  
Independent  
3005 Buffalo Drive Box 13277  
Houston 19, Texas

---

JOHN L. BIBLE  
Gravity-Magnetic Surveys  
Interpretations  
1045 Esperson Bldg.  
Houston 2, Texas

---

JOHN W. BYERS  
Consulting Geophysicist  
5427 Lotus PA 3-4674  
Houston, Texas

---

RALPH B. CANTRELL  
Petroleum  
Geologist & Engineer  
4005 Bellaire Blvd.  
Houston 25, Texas

---

JACK COLLE  
Consulting Geologist  
& Paleontologist  
911 San Jacinto Bldg.  
Houston 2, Texas

---

PAUL FARREN  
Geophysical Consultant  
1528 Bank of the Southwest Bldg.  
FA 3-1356  
Houston 2, Texas

---

HERSHAL C. FERGUSON  
Consulting Geologist  
1421 Esperson Bldg. CA 8-8419  
Houston 2, Texas

---

HAROLD L. GEIS  
Consulting Geologist  
2123 Bank of the Southwest Bldg.  
Houston 2, Texas

---

JOHN R. GRAHAM, JR.  
Consulting Geologist  
3311 West Alabama Ave., Suite 103  
Houston 6, Texas

---

HUBERT GUYOD  
Well Logging Consultant  
P. O. Box 13243  
Houston 19, Texas

---

GENTRY KIDD  
Independent  
813 Niels Esperson Bldg.  
Houston 2, Texas

---

B. J. "Bill" LADAS  
Drafting • Base Maps • Surveying  
Lease Checks  
Texas & Louisiana Bldg. CA 4-1215  
Houston 2, Texas

C. T. MacALLISTER  
Consulting Geophysicist

6327 Vanderbilt  
Houston 5, Texas

---

GEORGE N. MAY & ASSOCIATES  
Consulting Geologists  
& Paleontologists

Nat Mouton Bldg. CE 4-3379  
Lafayette, Louisiana

---

W. B. McCARTER  
C. E. McCARTER  
Independents

1415 Sul Ross  
Houston, Texas

---

P. A. "DUTCH" MEYERS  
Consulting Geologist

419 Esperson Bldg.  
Houston 2, Texas

---

R. B. MITCHELL  
Independent

1418 First City National Bank Bldg.  
Houston 2, Texas

---

JOHN C. MYERS  
Consulting Geologist

1207 Bank of the Southwest Bldg.  
Houston 2, Texas

---

WALTER J. OSTERHOUDT  
Exploration Geophysicist  
& Geologist

P. O. Box 3182  
Durango, Colorado

---

SAM M. PENA  
Consulting Geophysicist

952 Mellie Esperson Bldg. CA 8-8505  
Houston 2, Texas

C. H. SAMPLE  
Consulting Geologist

404 Esperson Bldg. FA 3-9997  
Houston 2, Texas

---

FRED L. SMITH, JR.  
J. T. GOODWYN, JR.  
Consulting Geologists

1226 Bank of the Southwest Bldg.  
Houston 2, Texas

---

A. H. WADSWORTH, JR.  
Geologist

402 Texas National Bank Bldg.  
Houston 2, Texas

---

DAVIS M. WALLACE  
Independent

1625 Bank of the Southwest Bldg.  
Houston 2, Texas

---

J. C. WALTER, JR.  
Geologist-Petroleum Engineer

2202 Esperson Bldg. CA 7-1246  
Houston 2, Texas

---

GEORGE F. WATFORD  
G. R. HINZ  
Consulting Geologists

833 Bankers Mortgage Bldg.  
Houston 2, Texas CA 7-6935

---

JAMES A. WHEELER  
Consulting Geologist

1514 Esperson Bldg.  
Houston 2, Texas

---

HERBERT E. WILLIAMS  
Geologist • Oil Producer

1001 San Jacinto Bldg.  
Houston 2, Texas

**KILROY COMPANY OF  
TEXAS, INC.**

-----○-----

**ADA OIL COMPANY**

-----○-----

**ANDERSON AND COOKE**

-----○-----

**CAMERON IRON WORKS, INC.**

-----○-----

**PERNIE BAILEY,  
DRILLING CONTRACTOR**

-----○-----

**TEXAS INSTRUMENTS  
INCORPORATED**

**MICHEL T. HALBOUTY**

-----○-----

**BIBLE GEOPHYSICAL  
COMPANY, INC.**

-----○-----

**BIG "6" DRILLING COMPANY**

-----○-----

**HOUSTON NATURAL GAS  
CORPORATION**

-----○-----

**HUMBLE OIL & REFINING CO.**

-----○-----

**JOHN W. MECOM, INDEPENDENT**

---

**SUPPORT YOUR BULLETIN ADVERTISERS**

---

**CYPRUS OIL COMPANY**

-----○-----

**BANK OF THE SOUTHWEST**

-----○-----

**BAROID WELL LOGGING SERVICE**

-----○-----

**BERG GEOPHYSICAL COMPANY**

-----○-----

**DOWELL DIVISION OF  
THE DOW CHEMICAL COMPANY**

-----○-----

**GINTHER, WARREN  
AND COMPANY**

**BLAKEYS LOG SERVICE**

-----○-----

**BREWSTER-BARTLE  
DRILLING COMPANY, INC.**

-----○-----

**HARRY T. BRYANT  
DRILLING, LTD.**

-----○-----

**ROBERT MOSBACHER**

-----○-----

**QUINTANA PETROLEUM  
CORPORATION**

-----○-----

**TEXAS GULF SULPHUR COMPANY**



## NOTES

Review:

H.G.S. Boy Scout Field TripApril 1-2, 1960

Because the field trip was conceived with the layman in mind, its importance to the geological profession lies in making available a "showcase of geology" for future reference in the field of public information in the Houston area ... community recognition of the geologist's professional role. There will be other local groups -- Boy Scouts, students -- who will solicit guidance of the kind which the material prepared by George Dickinson's Boy Scout Committee can admirably fulfill.

To be sure, participation by these groups under H.G.S. auspices should be encouraged. The multilithed 8-page field trip guide should not be permitted to get lost as available copies pass into other hands. Perhaps herein is a worthy project: to modify the guide material for general application even without professional leadership, add a location map, and bind in an inexpensive cover for distribution to interested groups.

The material is necessarily elementary but in this is its unique value versus the technical field trip guidebooks which have solely the professional geologist in mind. The locale is the Central Mineral Region, the only complete outdoor "classroom" within reach of Houston. Field trip stops were selected to exhibit as complete a section as is feasible for a week-end jaunt. Prefaced by a brief outline of the area's geological history, and laced with basic geological information along the route at selected stops, a fair insight into geology and geological processes can be picked up by the interested lay observer at first hand.

Included is a generalized geologic column and diagrammatic cross-section view of the route traversed. The latter is reproduced elsewhere in the Bulletin. To best explain the breadth of geological coverage embodied in the guide, below is reproduced a tabular summary of what was observed. In every instance one or more stops were picked as being illustrative of features of the various eras in geologic time being traversed.

## TERTIARY ERA

(Mammals)

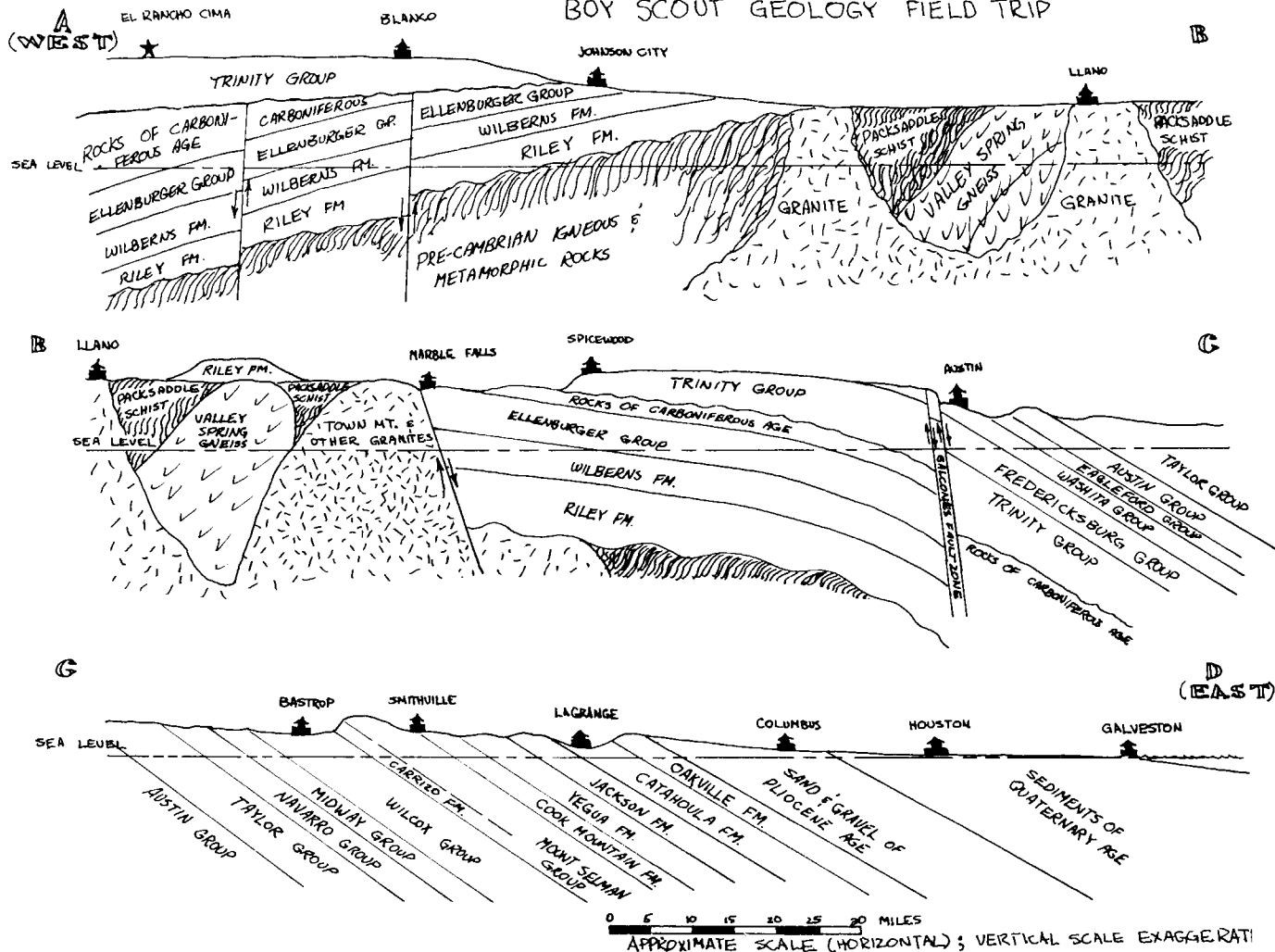
Erosion in Llano area

Continued subsidence of Gulf Coast region and accumulation of thick sediments near present coast.

70 mill. yrs.

Faulting around Austin, Gulf Coast region submerges.

# CROSS-SECTION OF ROUTE TRAVERSED BY BOY SCOUT GEOLOGY FIELD TRIP



## MESOZOIC ERA

Marine limestone and shale, flat-lying beds. Submergence beneath shallow Cretaceous seas.

(dinosaurs)  
200 mill. yrs.

Uplift and erosion of the complex of older rocks (Llano geology looked much as it does today).

Period of faulting and tilting of the rocks. Some Precambrian granite masses raised by faulting so that they lie against Upper Paleozoic beds.

PALEOZOIC ERA  
(marine fossils  
dominant)

More limestone, marine fossils (Marble Falls). Limestone extensively deposited (Ellenburger).

Glauconitic limestone and sandstone (Cap Mt. & Lion Mt.). Some knobs of Precambrian granite still stood above the sea floor at this time.

Coarse sandstone (Hickory) deposited around granite islands in shallow sea.

550 mill. yrs.

Sea advances over Llano area.

Slow uplift, accompanied by erosion, for many millions of years. Eventually resulted in exposure of the metamorphic rocks and granites at the surface.

PRECAMBRIAN ERA

Several types of granite successively intruded into the metamorphic rocks, followed by pegmatites and quartz veins.

1000 mill. yrs.

Intrusions of dark igneous rock, metamorphosed to serpentine.

(very primitive  
life, no fossil  
record)

Ancient sediments (shale, limestone) were strongly folded and recrystallized into metamorphic rocks (schist, marble).

The entire 1959-60 Boy Scout Committee is to be commended for its very large contribution toward stimulating an interest in geology. This year's chairman is Lowell K. Mower (JA 4-6828). Contact him with suggestions, or questions, and to offer assistance.

...W. A. Petersen  
Continental Oil Company

Interim Report:  
Current Status of Proposal for Reorganization of AGI

The proposal for reorganization of AGI is now in the hands of the governing bodies of the various member societies. Each has been requested to make suggestions for changes and alterations in writing.

To those who have been very closely involved in discussing the proposed reorganization of AGI, it has been increasingly evident that there are numerous misunderstandings of and questions on the situation, all of which have been thoroughly explored in previous communications and the formal proposal for reorganization.

The Executive Group did not expect to develop a proposal completely acceptable to everyone. In several particulars, the Executive Group simply could not take responsibilities which could have serious consequences. Only the majority of member societies can take the final responsibility for changes which could have far-reaching and deleterious effects on a federation, e.g., the name, and matters relating to tax status. There are many areas of compromise in the proposal and its wording.

However, there are four basic fundamentals in the reorganization plan which it is believed cannot be changed if the AGI concept is to survive. Every report, opinion, suggestion and criticism of AGI was carefully analyzed and discussed prior to making the formal proposals. The history and experience of a number of somewhat similar organizations, e.g., American Chemical Society, American Institute of Physics, American Institute of Biological Sciences, were explored in detail and carefully considered in light of the reorganization.

The four basic fundamentals in the proposed reorganization can be outlined as follows:

I. An AGI as a federation of geological societies must have a compelling mission and reason for existence to merit and secure support from the individual society member. This mission cannot be in conflict with purposes, functions and aims of member societies.

II. The compelling mission of AGI must be in the field of specific professional service and professionalism.

This obvious conclusion was guided by the report of the Joint GSA-AAPG Liaison Committee meeting at Pittsburgh, November 3, 1959. We quote two pertinent paragraphs from page 2 of this analytical report:

"It appeared to be the unanimous opinion of those present that unless AGI can shortly present to the potential individual member a definite program of objectives designed to offer tangible benefits both to the profession and to the individual, its future is questionable.

The present slowdown in exploration activity has provided a favorable time in which to forcibly present a constructive program designed to create individual support of AGI. The recent widespread interest in upgrading professional standards of earth scientists provides an excellent opportunity to demonstrate to the individual that AGI provides a vehicle which a scientific society lacks for handling such problems."

There can be no misunderstanding of the meaning of these paragraphs; to the Committee they constituted a mandate from two of the major member societies. A long existing vacuum in the professional aspects of the geological sciences must be filled by providing for the specific needs, requirements, hopes and aspirations of the individual geological scientist to secure his support. There can be no possible conflict with member societies in this mission. All of them are chartered in the scientific and technical fields, and for the most part prohibited from operating in the professional field.

There are many areas of professional service in the geological sciences and in coordination of the activities of member societies which can and will develop. The proposed reorganization has only changed the emphasis in the four long recognized major fields of operation of AGI:

- A. Professional relations and service
- B. Education
- C. Public Relations
- D. Government Relations (not confined to the United States alone).

If properly implemented and administered, many geological scientists who do not need the service will support such a plan which contributes to efforts to raise standards.

### III. Financial stability must be assured.

A federation of geological societies must be afforded basic financial support by the member societies and preferably, in our opinion, by the individual member. This support cannot be subject to the whims and vagaries of succeeding governing boards whose individual opinions too often do not reflect the feelings of the rank and file of its members. We could not insist that each member society take this question to its membership. Nevertheless, we believe that the members of each member society should be given the opportunity to express their opinion on nominal individual support of a reorganized AGI, thereby placing the individual stamp of approval on the reorganized federation. It is the opinion of the Executive Group that if the majority of geological scientists are not willing to financially support a reorganized AGI and thus approve the four basic fundamentals of the proposed reorganization, then the profession does not want a federation and the concept should be abandoned.

### IV. A federation must have representative, responsible, firm

government and direction to assure accomplishment of its fundamental purposes and mission.

The proposal for strengthening this phase of an AGI was lifted, with some modification, almost bodily from several reports on AGI, including the Bucher report to the GSA Council and the Joint memorandum of the Presidents of GSA, AAPG, and SEG reporting the Dallas meeting of July 11, 1959.

We see no possibility of substantial change in these basic fundamentals of the proposed plan, although there is every opportunity for compromise and change in many areas and aspects of the proposal. We believe that if the individual member of member societies will not support a federation based on these fundamentals, there is no hope for its future, nor reasons for its continued existence. The issue is crystal clear: either we need and want a federation with a compelling reason for existence and mission, and are willing to furnish moral and financial support, or we do not believe it is necessary or desirable.

Many have written wanting to know how they can advance the cause. The support of the individual geological scientist is necessary, and he must be informed and his interest aroused. The fate of AGI is a matter of grave concern to every geological scientist. The proposals must be accepted or rejected on their merits by the rank and file. Whether in sympathy with the proposals or not, each is urged to review the basic, essential facts and fundamentals of the reorganization plan and stimulate discussion. The only route to decision lies in full and complete information.

...abstracted from June 10, 1959 letter  
by B. W. Beebe, Chairman  
AGI Reorganization Committee

### DID YOU MISS?

The Mississippi Geological Society conducted its fifteenth annual field trip in May, visiting localities of the Vicksburg, Jackson and Claiborne Groups as well as covering structural and stratigraphic aspects of Paleocene through Recent units. Special emphasis was placed on the Citronelle Formation and the Plio-Pleistocene terraces which are well-developed and exposed in southern Mississippi. Examples of recent sedimentation were viewed at Dauphin Island, Alabama, in the course of the trip.

Guidebook of the field trip may still be obtained by writing Mr. W. E. Gardner, The California Company, Box 822, Jackson, Miss.

## DISTINGUISHED SERVICE

At the April meeting of the Houston Geological Society four members were singled out to receive honorary lifetime memberships in the Society. Distinction in the field of geology and outstanding contribution to the success and welfare of the Society is the common denominator shared by these men for which they were recognized and so honored. Pictures were seen in the May Bulletin; herewith is the briefest of bibliography. There isn't room to catalogue the many deeds, the works, the individual contribution of the outstanding member geologists whom we pause to salute.

President of Humble Oil & Refining Company, MORGAN J. DAVIS is a graduate of the University of Texas, with a B.S. degree in geology. Before joining Humble as a geologist he served as a construction engineer on the Tulsa Spavinaw Water Project. After four years in Humble's Roswell, N. M. office he joined Nederlandsche Koloniale Petroleum Mij. and was stationed in Java and Sumatra, where he led geological expeditions into several islands of the Archipelago and later served as resident geologist in Sumatra. Davis returned to Humble as district geologist for New Mexico and later was geologist for the Gulf Coast division. After becoming chief geologist for the company, he was also made manager of the exploration department.

Davis is a past president of the American Association of Petroleum Geologists, and a member of the board of directors of Texas Mid-Continent Oil and Gas Association and the American Petroleum Institute. He is a member of the National Petroleum Council, the Alumni Advisory Committee on the Advanced Management Program at Harvard's Graduate School of Business Administration, and chairman of the advisory council of the Geology Foundation at the University of Texas. He belongs to Sigma Gamma Epsilon, honorary mineral science fraternity, and Sigma Iota Epsilon, honorary business fraternity.

IRA H. CRAM, a director, senior vice president and chairman of the executive committee of Continental Oil Company, has had geological experience throughout the United States, Canada, South America and Africa. He is president and director of Conoco Somal, Ltd., and a director of six Continental affiliates and subsidiaries. Before joining Continental as vice president and manager of exploration, he was manager of exploration for The Pure Oil Company.

A past president of the AAPG, Cram has a M.S. degree in geology from the University of Minnesota. In 1957 he was presented the University of Minnesota's Outstanding Achievement Award in recognition of "noted professional attainment," an award presented annually to a distinguished graduate of the university.

BEN C. BELT, retired vice president of the Houston production division of Gulf Oil Corporation, serves as a consultant to Gulf and several other companies. After receiving a B.S. degree in geology from the University of Oklahoma he was a field geologist for Mexican Eagle Oil Company and later an independent geologist in Tulsa. He worked in Mexico and Cuba for the Mexican Gulf Oil Company and then became chief geologist of Gulf's Fort Worth district. He was made assistant to the chief geologist, Houston division, after serving as manager of Pantepec Oil Company at Tampico, Mexico, and investigating petroleum resources in New Zealand and Australia for Vacuum Oil Company. During his employment with Gulf, Belt participated in the development of the East Texas field, the Yates, Goldsmith and McElroy fields of West Texas, and the Grand Bay, Quarantine Bay and West Bay fields of Louisiana. He supervised Gulf's pioneering explorations in waters of the Continental Shelf offshore from Texas and Louisiana.

A member of the API, the Mid-Continent Oil and Gas Association and the AAPG, Belt was selected by the Distinguished Service Award committee to receive one of the two 1956 awards for outstanding service to the industry. He served four terms as president of the Houston Chamber of Commerce and has been chairman of the board of directors of the Houston United Fund.

SHIRLEY L. MASON, a member of the Houston Geological Society advisory committee, is a geological consultant. He retired in 1958 as senior staff geologist, Pan American Petroleum Corporation, after 22 years with the company. Prior to that he engaged in geological work for several companies in Bolivia, Colombia, Iraq, Mexico, Turkey, Venezuela, Portuguese West Africa, North Texas and the Gulf Coast. He holds A.B. and Ph.D. degrees from Harvard and a M.S. degree from the University of Pittsburgh. He has written many papers on geological regions and oil fields.

Mason was editor of the Houston Geological Society Bulletin in 1958-59 and has served on various committees and study groups of the society. He is a member of the AAPG business committee and has served on several committees in connection with Houston conventions. In 1954 he was editor of Transactions, publication of the Gulf Coast Association of Geological Societies. He is also a Fellow member of the Geological Society of America.

---

---

GOLFERS

GOLFERS

H.G.S. GOLF TOURNAMENT

River Bend Country Club

September 30, 1960

---

---



HOUSTON GEOLOGICAL SOCIETY

PUBLICATIONS LIST

- ☐ 1954 Cross sections Upper Gulf Coast of Texas (4 strike and 2 dip sections). Vertical scale 1" equals 800'. Horizontal scale 1" equals 16,000'.  
Price per set - \$10.00 plus postage
- ☐ 1954 HGS Study Group Report, Stratigraphy of the Upper Gulf Coast of Texas, and Strike and Dip Cross Sections of Upper Gulf Coast. Approximately 50 pages. General discussion of Tertiary Formations. Four fold-out Dip Cross Sections. Two fold-out Strike Cross Sections.  
Price - \$5.00 plus 25¢ postage
- ☐ 1952 Geologic strip maps. Highway 77 from Texas-Oklahoma State Line to Dallas and Highway 75 from Dallas to Galveston. Includes culture, geologic formations' outcrop at surface, subsurface contouring, and Fields with pertinent data.  
Price - \$1.50 per copy, postpaid
- ☐ 1959 Geologic strip maps. U.S. Highway 90 from Texas-Louisiana State Line to Van Horn and U.S. Highway 80 from Van Horn to Texas-New Mexico State Line.  
Price - \$2.75 per copy, postpaid
- ☐ 1953 AAPG - SEPM - SEG Guidebook  
General discussion, Cross Sections, and Structure Maps of 23 Gulf Coast Fields. Articles of six aspects of Gulf Coast Geology. Itinerary of five field trips.  
Price - \$5.00 plus 25¢ postage
- ☐ 1958 Guidebook of the Annual Field Trip, HGS & SEPM, Upper and Middle Tertiary, Brazos River Valley, Texas  
Price - \$3.25, postpaid
- ☐ 1959 Guidebook of Field Trip, HGS, Boling Dome, Wharton County, Texas. Includes cross sections of flank of dome.  
Price - \$1.00 per copy, postpaid
- ☐ 1959 HGS Frio Study Group Report. The Frio Formation of the Upper Gulf Coast of Texas. Includes 3 lithofacies maps of Upper & Lower Frio Formation, Diagrammatic Stratigraphic Section of Frio Formation, text explaining method of mapping, tabulation providing datum and detail data for all reference wells.  
Price - \$3.00 per copy plus 25¢ postage

- ☐ 1959 Guidebook, Annual Field Trip, HGS & SEPM. Lower Tertiary and Upper Cretaceous, Brazos River Valley, Texas  
Price - \$3.25 per copy postpaid
- ☐ 1960 Guidebook, Annual Field Trip, HGS & SEPM. Jackson Group, Catahoula and Oakville Formations and Associated Structures of Northern Grimes County, Texas  
Price - \$3.50 per copy postpaid
- ☐ Houston Geological Society Bulletin  
Includes abstracts of papers presented to the Society and other scientific notes.  
(Published September through June - 10 issues)  
Price - 50¢ per copy  
\$3.00 per year  
\$4.00 per year foreign

On all foreign orders please include 25¢ additional per book for postage. This does not apply to orders for the Bulletin.

USE THIS AS YOUR ORDER BLANK.

Please make all checks payable to: Houston Geological Society,  
Academic Fund

Mail to: Houston Geological Society  
234 Esperson Building  
Houston 2, Texas (U.S.A.)

-----

Please type or print:

SHIP TO: \_\_\_\_\_

ADDRESS: \_\_\_\_\_

\_\_\_\_\_

**BYERS EXPLORATION COMPANY**

-----○-----

**CAMBE LOG LIBRARY, INC.**

-----○-----

**CORE LABORATORIES, INC.**

-----○-----

**CARDINAL  
PRINTING COMPANY, INC.**

-----○-----

**EMRACO PRODUCTION  
LABORATORIES, INC.**

-----○-----

**EUROPEAN IMPORT COMPANY**

**HOMCO**

-----○-----

**HUGHES TOOL COMPANY**

-----○-----

**HYCALOG, INC.**

-----○-----

**INDEX GEOPHYSICAL SURVEYS**

-----○-----

**JOHNSTON TESTERS, INC.**

-----○-----

**MAXIM'S**

---

**SUPPORT YOUR BULLETIN ADVERTISERS**

---

**FAILING EXPLORATION  
AND DRILLING**

-----○-----

**FIRST CITY NATIONAL BANK**

-----○-----

**GENERAL GEOPHYSICAL  
COMPANY**

-----○-----

**GEOPHYSICAL ASSOCIATES  
INTERNATIONAL**

-----○-----

**GEOPHYSICAL SERVICE, INC.**

-----○-----

**HALLIBURTON  
OIL WELL CEMENTING**

**LANE WELLS COMPANY**

-----○-----

**McCULLOUGH TOOL COMPANY**

-----○-----

**MEADOWS AND WALKER  
DRILLING COMPANY**

-----○-----

**MEREDITH AND COMPANY**

-----○-----

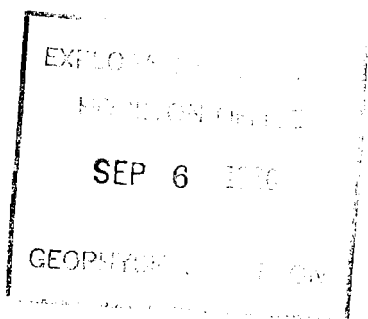
**MILWHITE MUD COMPANY**

-----○-----

**M. P. S. PRODUCTION CO.**

*Houston Geological Society*

234 ESPERSON BUILDING  
HOUSTON, TEXAS



ROBERT P. CLARK  
PHILLIPS PETROLEUM CORP.  
P. O. BOX 1967  
HOUSTON 1, TEXAS

BULK RATE  
U. S. POSTAGE  
**PAID**  
Houston, Texas  
Permit No. 5872