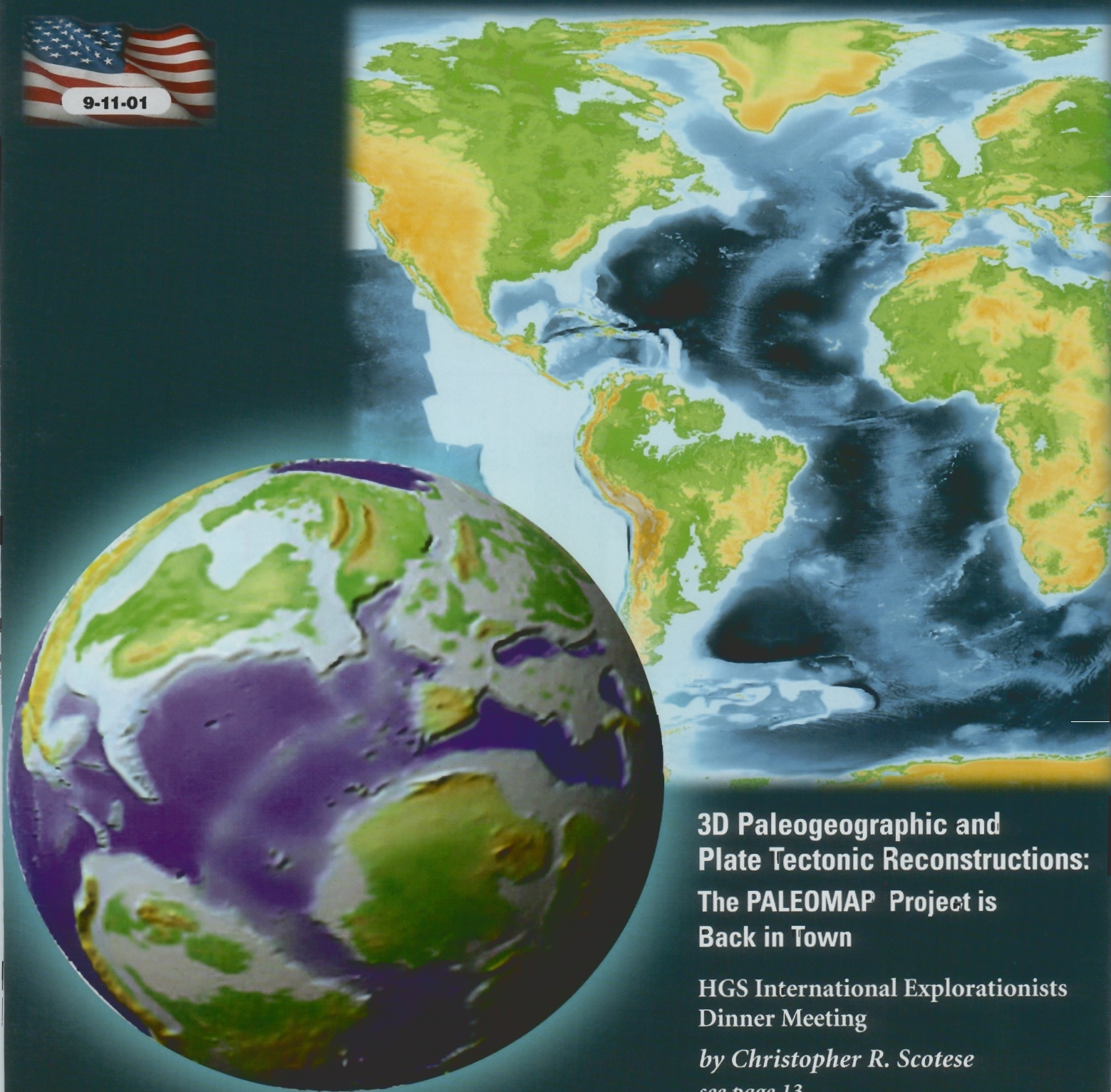


# HGS Bulletin

Volume 44 Number 9

Houston Geological Society

May 2002



**3D Paleogeographic and  
Plate Tectonic Reconstructions:  
The PALEOMAP Project is  
Back in Town**

HGS International Explorationists  
Dinner Meeting

*by Christopher R. Scotese  
see page 13*



# Lexco Data Systems Introduces



- Large scale map plotting capability using HP DesignJet™ Plotters
- Color coded Lease Ownership Maps
- Color coded Lease Expiration

## OWL 6

For Windows 95/NT

- Monthly Well Completion Production for all past OCS production
- Mapping selected OWL6 reports
- Pipelines on OWL6 maps

OWL6 is now available for easy access to M.M.S. data.  
Offshore Well and Lease Information for the Gulf of Mexico.  
Visit our Website at [www.lexco.com](http://www.lexco.com) or call us for a demo and  
free 90-day trial period!  
(281)370-4313

The average geologist spends

# 41%

of their time  
finding logs.\*

**Well Log Data Management: Just One Part of the Total Solution.**

A2D Technologies is a petroleum well log data provider that helps E&P companies locate, acquire, utilize, interpret and manage well log data. The Total Solution will allow your organization to make a smooth transition from the paper-based workflow of yesterday to today's digital technology. Our data management solution allows you to instantly access a complete inventory of required well log data - whether it be your proprietary information or data from A2D's LOG-LINE database. These wells can be downloaded directly to your desktop and share them with other Geoscientists in your organization. That's why major E&P firms let us manage their data for them. Plus, with A2D's LOG-LINE service, acquire the logs you need and start working with them in minutes.

### A2D: The Total Solution

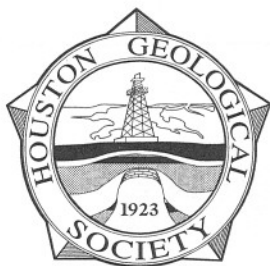
\*Finding Report in the Study of Well Log Data Management, Philip C. Crouse and Associates, 1998.



Acquire  
Interpret  
Manage  
Support

[www.a2d.com](http://www.a2d.com)





# The Bulletin

Houston Geological Society

Volume 44, Number 9

May 2002

## contents

### In Every Issue

- 5 From the President**  
*by Paul Hoffman*
- 24 GeoEvents Calendar**
- 39 Remembrances**
- 43 HGA/GeoWives**
- 45 Professional Directory**

**about the cover:** Paleobathymetry and topography for the early Miocene are shown in the large background map. The globe displays the Paleo Topography and Bathymetry of the Late Cretaceous 80 MMYA)

#### Houston Geological Society

10575 Katy Freeway,  
Suite 290  
Houston, TX 77024  
Office Hours: 8 a.m.–5 p.m.  
Phone 713-463-9476  
Fax 713-463-9160  
Reservations 713-463-8920

#### Office Manager:

Joan Henshaw  
joan@hgs.org  
submit your address  
changes to the Office Manager

#### HGS Web Page

<http://www.hgs.org>

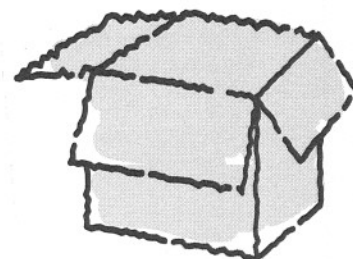
Jobs Hotline is on  
Web Page

The Houston Geological Society *Bulletin* (ISSN-018-6686) is published monthly except for July and August by the Houston Geological Society, 10575 Katy Freeway, Suite 290, Houston TX 77024. Subscription to this publication is included in the membership dues (\$20.00 annually). Subscription price for non-members within the contiguous U.S. is \$30.00 per year. For those outside the contiguous U.S., the subscription price is \$46.00 per year. Single-copy price is \$3.00. Periodicals postage paid in Houston, Texas.

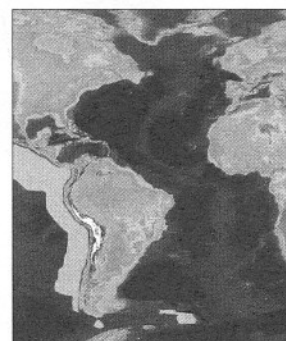
POSTMASTER: Send address changes to Houston Geological Society *Bulletin*, 10575 Katy Freeway, Suite 290, Houston TX 77024.

### Technical Meetings

- 7 HGS General Dinner Meeting**  
Thinking "Outside of the Box"  
—The Role of the Geologist in  
Meeting Future Energy Demand  
*by Robbie Gries*
- 13 HGS International Explorationists  
Dinner Meeting**  
3D Paleogeographic and Plate Tectonic  
Reconstructions: The PALEOMAP Project  
is Back in Town  
*by Christopher R. Scotese*
- 17 HGS Luncheon Meeting**  
Review of Late Jurassic Depositional Systems  
and Potential Hydrocarbon Plays, Northern  
Gulf of Mexico Basin  
*by Thomas Ewing*
- 21 NeoGeos News**



page 7



page 13

### Other Events

- 4 Guest Night at The Houston  
Museum of Natural Science**
- 30 6th Annual Summer Technofest**

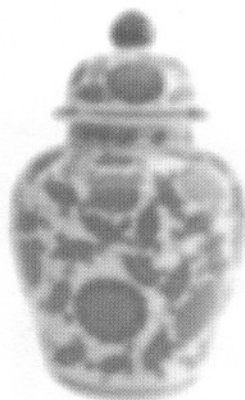


page 29

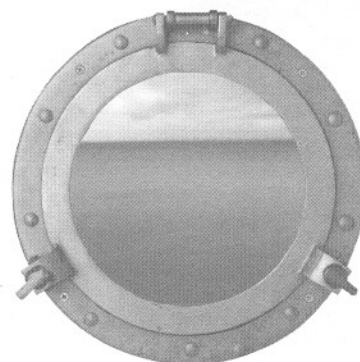




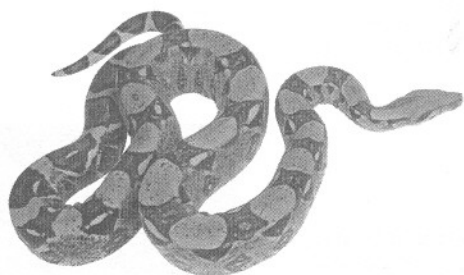
Snake



Jar



Ocean view



16 foot-long adult male red-tailed  
boa constrictor (*Boa Constrictor*  
*Imperator*.) Kills by rapidly squeezing  
its prey in ever-tightening coils.  
Non-poisonous, but delivers  
a painful bite.



Expertly crafted Chinese porcelain jar  
of the quality popular in Yongle Period  
of Ming Dynasty (1403-1424 AD.)  
The Indian lotus motif is  
characteristic of the period.  
Estimated value: \$1.5 million.



View of *Neptune*, the first major  
ultra-deepwater subsalt discovery  
in the Gulf of Mexico, and part of  
a billion-barrel trend. WesternGeco  
provided the acquisition, processing,  
and turning-wave depth imaging  
that contributed to this discovery.

***A little clarity is worth a lot.***

*WesternGeco – the reservoir imaging company.*

*A Schlumberger / Baker Hughes company*



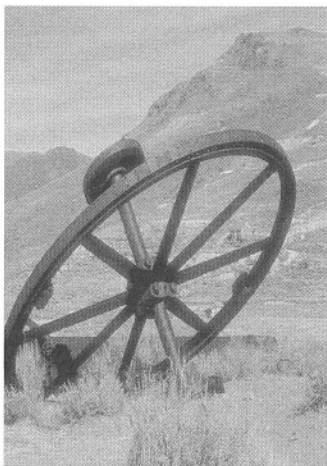


## Board of Directors 2001-02

President (P)	Paul F. Hoffman	Duncan Oil	713-840-8755	phoffman@duncanoil.com
President-Elect (PE)	Denise M. Stone	BP	281-366-2705	stonedml@bp.com
Vice President (VP)	Paul W. Britt	Texplore Inc	281-494-3155	pwbritt@ev1.net
Treasurer (T)	Craig Dingler	Safety Kleen	281-930-2394	cdingler@sprintmail.com
Treasurer-Elect (TE)	Rick L. Nagy	Phillips Petroleum	713-669-3469	rlnagy@ppco.com
Secretary (S)	Sharie Sartain	Phillips Petroleum	713-669-2194	smsarta@ppco.com
Editor (E)	Wendy Hale-Erlich	Consultant	281-232-5092	bulletin_editor@hgs.org wherlich@pdq.net
Editor-Elect	Steve Levine	Conoco	281-293-1862	steve.d.levine@usa.conoco.com
Director 00-02 (D1)	Paul Babcock	People's Energy	713-890-3603	pbabcock@pecorp.com
Director 00-02 (D2)	Tom McCarroll	Consultant	713-839-9056	tom_mccarroll@yahoo.com
Director 01-03 (D3)	Susan Cunningham	Noble Affiliates	281-872-3370	scunningham@nobleaff.com
Director 01-03 (D4)	Scott C. Sechrist	Panaco	713-970-3189	acoustic@airmail.net

Committee	Chairperson	Phone	Email	Board Rep.
AAPG Delegate Foreman	John Jordan	281-618-6178	jjordan@kmg.com	D3
Academic Liaison	Art Berman	713-557-9076	aebberman@houston.rr.com	D3
Advertising	Annette Mather	713-463-9476	ads@hgs.org	E
Advisory	Synthia Smith	713-621-5720	sesmith@biznavsys.com	P
Arrangements	Lee Boatner	713-586-5728	lee@houstonenergyinc.com	VP
Awards	Dean Grafton	281-497-5983		D3
Ballot	Don Scherer	713-970-3158	dons@panaco.com	P
Calvert Fund	Carl Norman	713-461-7420	dod895@aol.com	PE
Computer Applications				D4
Continuing Ed	Robert Pledger	281-558-8585	rpledger@swbell.net	D2
Directory	Carol Lucas	713-393-4854	clucas@Paradigmgeo.com	S
Earth Sc. Wk - ESW General	Elizabeth Fisher	281-597-1777	eafisher@jasongeo.com	D1
Earth Sc. Wk - Logistics	Jennifer Burton	281-876-8357	jennifer_burton@anadarko.com	D1
Emerging Technology	Frank Rabbio	281-552-1242	frank_rabbio@oxy.com	VP
Eng. Council of Houston	Claudia Ludwig	713-723-1436	petra@hal-pc.org	D3
Eng. Council of Houston	Richard Howe	281-376-8744	rghowe@pdq.net	D3
Env. & Eng. Geology	Glenn Lowenstein	281-546-4365	goldlowe@sprintmail.com	VP
Exhibits	Jim Becnel	281-353-0359		D2
Field Trips	Howard White	281-618-6058	hwhite@kmg.com	D2
Finance	Ken Nemeth	713-609-5771	knemeth@houston.oilfield.slb.com	T
Fishing Tournament	Bobby Perez	281-240-1234	r_perez@jdkseis.com	D4
Foundation	Hugh Hardy	713-729-9208	mghwh@aol.com	PE
Fund Raising	Lee Backsen	713-993-9788	lbacksen@mindspring.com	P
Global Climate Change	Jeffrey Lund	281-618-6910	jlund@kmg.com	D3
Golf Tournament	Allan Fillipov	713-881-8900	afilipov@seitel-inc.	D1
Government Affairs	Randy Miller	713-880-4343	rvmil@hotmail.com	D2
Guest Night	Clint Moore	281-874-8730	clint_moore@anadarko.com	D1
Historical	Dan Bonnet	713-650-8008	bondate@kingwoodcable.com	S
Houston Energy Council	Sandi Barber	713-723-1480	sbarber@pdq.net	D3
Houston Geol. Auxiliary	Millie Tonn	713-960-0769	etnnot@aol.com	D2
International Ex.	Jim Tucker	281-829-0605	jtuckergeo@aol.com	VP
International Ex. Programs	Al Danforth	713-780-8622	al.danforth@worldnet.att.net	VP
Library	Bill Champion	713-779-2575	colbill088@aol.com	D2
Membership	Matt Bognar	832-351-8510	matthew_bognar@veritasdgc.com	S
Museum of Nat. Sc.	Inda Immega	713-661-3494	immega@swbell.net	D1
N. American Expl.	Stephanie Matthews	713-529-7599	mmgeo@mindspring.com	VP
NeoGeos	Helena Griffiths	713-245-7978	hgriffiths@shellus.com	VP
New Publications	Tom Fiorito	713-224-1877	tfior@sextantenergy.com	D1
New Publications	Bill Rizer	281-574-4173	rizerwd@fbtc.net	D1
Nominations	Craig Moore	713-495-3034	cmoore@geoscience-services.com	P
Office Management	Jim Ragsdale	713-780-4393	jar1642@aol.com	PE
Personnel Placement	Mike Cline	713-665-5449	mikec@txresources.com	D4
Poster at Tech. Meetings	Gabor Tari	713-877-8544	GTari@vancoenergy.com	VP
Public Relations	Mark Cocker	713-752-2070	mcocker@scotia-group.com	D3
Publication Sales	Tom Mather	713-658-4106	geomather@aol.com	TE
Remembrances	Bill Robbins	281-986-6767	bill.robbins@totalfinaelf.com	S
Scouting	George Krapfel	713-989-7433	ggkrapfel@cmsenergy.com	D4
Shrimp Peel	Lee Shelton	713-789-2444	lshelton@scacompanies.com	D1
Skeet Shoot	Ken Mohn	713-369-5859	kmohn@fugro.com	D4
State Registration	Dave Rensink	713-296-6332	dave.rensink@apachecorp.com	D2
Tennis Tournament	Ross Davis	713-659-3131	rossdavis@davisbros.com	D4
Vendor's Corner				TE
Website	Bill Osten	713-669-2146	lwosten@ppco.com	D4





# HGS Guest Night at The Houston Museum of Natural Science

Saturday, June 15, 2002

The Wiess Energy Hall

The Wortham IMAX Theatre

featuring a special showing of the NEW IMAX Film,

## *"The Great Journey West—Lewis & Clark"*

with Western Barbeque Buffet Dinner

Catered by Ninfa's \$25.00 per person

Sponsored by



- 6:00–7:00 p.m. Museum doors open, social & browsing hour with cash bar. Be sure to see the Gem, Mineral, and Seashell Collections and, of course, the Wiess Energy Hall!
- 7:00–8:00 p.m. Dining in Museum on Two Levels
- 8:15–8:45 p.m. Awards Presentations in Museum
- 9:00–10:00 p.m. Presentation of **"Great Journey West—Lewis & Clark"** in the IMAX Theatre

The Houston Museum of Natural Science is located in Hermann Park across from Miller Theatre at One Hermann Circle.

### Registration Form • *HGS Guest Night Event*

Reservations and payment required by mailing check payable to:

Houston Geological Society—HGS Guest Night Event • 10575 Katy Freeway, Suite 290 • Houston, TX 77024

Call HGS at 713-463-9476 to confirm the receipt of your check. Send your check soon, only 400 seats available!

Refunds available until June 1, 2002. Reserve your space early, because we've sold out each previous year.

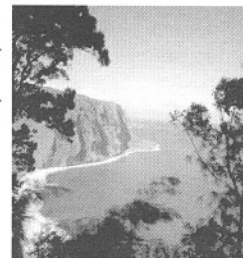
**No Sales at the door! Admittance by name tag only!**

Name: \_\_\_\_\_

Company: \_\_\_\_\_

Work Phone: \_\_\_\_\_

Guest name(s): \_\_\_\_\_







by Paul F. Hoffman

## President's Letter

# Convention Conversation

As I write this, I'm still charged up from the past few days at the AAPG convention. With nearly 7,800 in attendance, this event was the largest in at least the last nine years. As the host society this year, HGS was truly in the spotlight, and once again, the altogether successful outcome of this convention reflects very well on the core strength of the Houston Geological Society, its members.

For those who attended the convention, the rewards are well known—an abundance of opportunities to upgrade our knowledge of our science and our profession, as well as the camaraderie of great people. The convention theme “Our Heritage—Key to Global Discovery” was woven throughout. We heard from Michel T. Halbouty, whose contributions in petroleum exploration and in the arena of public service frame a life profoundly distinguished by accomplishment in all his endeavors. We also listened to a couple of other AAPG members who have done some literally out-of-this-world things—Jim Reilly, a veteran of two space shuttle missions and Harrison “Jack” Schmitt, one of just twelve people who have walked on the moon. These two remind us that exploration frontiers do remain in our time – and that geologists have a role to play in this exploration. We also witnessed an assembly of some of the most successful petroleum prospectors of our time, who shared not just their stories but their spirit. This convention offered wonderful opportunities to augment our education, but at least as important, it virtually radiated inspiration.

A fact perhaps not apparent to most is that the rewards of this convention reach beyond those who attended. First of all, a meeting like this one sustains progress in our science, which trickles down, leading to improved effectiveness and productivity for those of us in the profession. Second, thanks to the hard work and careful planning of many HGS members and of the AAPG convention staff, this meeting generated a good financial return. As the host society, HGS shares in the proceeds. This “non-recurring” income enables HGS to take more dramatic strides than the incremental improvement we must accept with the constraints of a typical operating budget. For example, the proceeds of the last AAPG convention held in Houston made possible a substantial contribution to the North Harris College Geoscience Technology Training Center, which was matched by AAPG. The combined sum allowed the training center to expand and to upgrade computer hardware and software, greatly enhancing its value to the geoscientists of the Houston area. Your Executive Board already has some ideas for the best use of this year's funds, but your input would be welcome. Pass along suggestions to any member of the Board (*contact information on page 3*).

The phrase “Thanks to the hard work and careful planning of many HGS members ...” appears in the preceding paragraph, but not with enough emphasis! The convention is an enormous enterprise, and these people more than just met the challenge. They deserve to be mentioned. They deserve my thanks and yours. I've listed below the volunteer members of the Convention Coordinating Committee, almost all of whom are HGS members. Please, when you see any of them, let them know that their efforts have been appreciated!

## Thanks

Jeff Lund	General Chairman
Deborah Sacrey	General Vice Co-Chair
Charles Sternbach	General Vice Co-Chair
John Anderson	SEPM Vice Chair
Elsa Capitan-White	DEG Vice Chair
Bob Shoup	DPA Vice Chair
Roger Fisher	EMD Vice Chair
John Adamick	Technical Program Coordinator
Pinar Yilmaz	AAPG Oral Sessions
Dan Bonnet	AAPG Poster Sessions
Bill Morgan	SEPM Technical Program Chairman
Rob Pascoe	SEPM Poster Sessions
Elsa Capitan-White	DEG Technical Program Chair
John Dombrowski	DPA Technical Program Chairman
Walter B. Ayers, Jr.	EMD Technical Program Chairman
Robert Pledger	Short Course Chairman
Art Saller	SEPM Short Course Chairman
Howard White	AAPG Field Trip Co-Chairman

John Meredith
Art Saller
Walter B. Ayers, Jr.
Gabor Tari
Mac McKinney
Robert Menzie
Douglas Peters
Lawrence Brady
Evelyn Medvin
Larry Bartell
David Reinkemeyer
Marti Lund
Gwinn Lewis
Edie Bishop
Marsha Bourque
Mike Barnes
Jeanne Phelps
Louise Durham
Lee Backsen

AAPG Field Trip Co-Chairman
SEPM Field Trip Chairman
EMD Field Trip Chairman
AAPG Matson Award Chairman
AAPG Braunstein Award Chairman
DEG Awards Chairman
EMD Awards Co-Chairman
EMD Awards Co-Chairman
International Pavillion
Entertainment Co-Chair
Entertainment Co-Chair
Spouse Entertainment Co-Chair
Spouse Entertainment Co-Chair
Spouse Entertainment Co-Chair
Teacher Program Chair
Volunteer Chair
Employment Interviews Chair
Convention Theater
Sponsorship Chairman





## HGS *Bulletin* Instructions to Authors

All materials are due by the 15th of the month, 6 weeks before issue publication. Abstracts should be 500 words or less; extended abstracts up to 1000 words; articles can be any length but brevity is preferred as we have a physical page limit within our current publishing contract. All submissions are subject to editorial review and revision.

**Text** should be submitted by email as an attached text or Word file or on a clearly labeled diskette in Word format with a hardcopy printout to the Editor.

**Figures, maps, diagrams**, etc., should be digital files using Adobe Illustrator, Freehand, Canvas or CorelDraw. Files should be saved and submitted in .eps (Adobe Illustrator) format. Send them as separate attachments via email or on a diskette or CD if they are larger than 1 MEG each, accompanied by figure captions that include the file name of the desired image. DO NOT EMBED them into your text document, they must be sent as separate files from the text. DO NOT USE POWERPOINT, CLIP ART or Internet images (72-DPI resolution) as these do not have adequate resolution for the printed page and cannot be accepted. All digital files must have 300-DPI resolution or greater at the approximate size the figure will be printed.

**Photographs** may be digital or hard copy. Hard copies must be printed on glossy paper with the author's name, photo or figure number and caption on the back. Digital files must be submitted in .jpg or .eps format with 300-DPI or greater resolution at the printing size and be accompanied by figure captions that are linked by the file name of the image. The images should be submitted as individual email attachments (if less than 1 MB) or on CD or zip disk.

### Advertising

The *Bulletin* is printed digitally using QuarkXPress. We no longer use negatives or camera-ready advertising material. Call the HGS office for availability of ad space and for digital guidelines and necessary forms or email to [ads@hgs.org](mailto:ads@hgs.org). Advertising is accepted on a space-available basis. Submit new ads or renewals by the 15th of the month, 6 weeks before issue publication.

RANDOM INSIDE					Inside Front Cover		Inside Back Cover		Outside Back Cover	Page 2	Calendar Page*
No. of Issues	Eighth	Quarter	Half	Full	Full	Half	Full	Half	Half	Full	Quarter
10	\$762	\$1284	\$2304	\$4383	\$5718	\$3119	\$5198	\$2860	\$4332	\$5260	\$1540
9	\$762	\$1284	\$2304	\$4383	\$5718	\$3119	\$5198	\$2860	\$4332	\$5260	\$1540
8	\$694	\$1168	\$2076	\$3988	\$5202	\$2838	\$4730	\$2602	\$3942	\$4786	\$1400
7	\$616	\$1040	\$1865	\$3550	\$4630	\$2525	\$4210	\$2316	\$3508	\$4260	\$1184
6	\$546	\$918	\$1650	\$3141	\$4098	\$2235	\$3726	\$2049	\$3105	\$3768	\$1104
5	\$460	\$775	\$1392	\$2648	\$3453	\$1885	\$3140	\$1728	\$2617	\$3178	\$930
4	\$375	\$632	\$1132	\$2154	\$2810	\$1533	\$2554	\$1405	\$2128	\$2585	\$757
3	\$303	\$510	\$918	\$1746	\$2277	\$1242	\$2070	\$1140	\$1725	\$2094	\$612
2	\$215	\$363	\$652	\$1240	\$1617	\$882	\$1470	\$808	\$1225	\$1488	\$436
1	\$135	\$228	\$410	\$780	\$1018	\$555	\$925	\$532	\$780	\$936	\$275
<b>Business Card</b> \$125 per 10 Issues – Send two cards (\$25 for each additional name on same card)					<b>Geo-Classified Ad</b> \$25 Per Issue Text Only			<b>TWO-COLOR AD</b> (Black and editor's choice) add 15% to cost *Color is included in price			

### CALL FOR ABSTRACTS

## 9th Annual International Petroleum Environmental Conference

October 22-25, Albuquerque, New Mexico

Papers and Posters are solicited that address solutions to environmental problems and regulatory issues in the petroleum industry in both exploration and production (E&P) and refining. The conference is sponsored by the IPEC, the University of Tulsa, WERC, U.S. DOE National Petroleum Technology Office and U.S. EPA Office of Research and Development. Please submit an abstract of 150 words by email to:

[kerry-sublette@utulsa.edu](mailto:kerry-sublette@utulsa.edu) by April 15, 2002. Additional information can be found at <http://ipec.ens.utulsa.edu>.



Monday, May 13, 2002

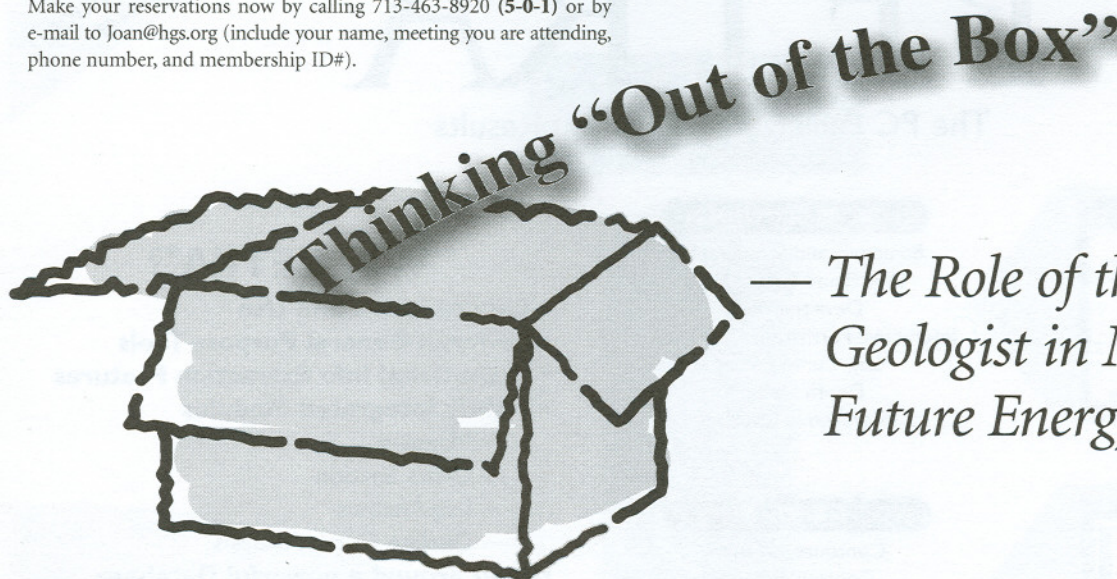
Westchase Hilton • 9999 Westheimer  
Social 5:30 p.m., Dinner 6:30 p.m.

Cost: \$25 Preregistered members; \$30 Nonmembers & Walk-ups

Make your reservations now by calling 713-463-8920 (5-0-1) or by e-mail to [Joan@hgs.org](mailto:Joan@hgs.org) (include your name, meeting you are attending, phone number, and membership ID#).

## HGS General Dinner Meeting

by Robbie Gries  
Priority Oil & Gas, LLC  
Denver, Colorado



### — The Role of the Geologist in Meeting Future Energy Demand

#### Abstract

The demand for oil and gas in the next century will greatly increase in the next few decades and reserves are limited. Converting vast amounts of “undiscovered” resources into proven reserves will require geologists “to think out of the box”. This means looking at methods no one has tried before, looking for accumulations previously thought unlikely, and looking in places others have overlooked or thought impossible.

This has never been easy, but it has been the key to giant new reserves being developed. Overturning the “dogma” that is currently favored by explorationists with a new “heresy” has a history of difficulty. From the “anticlinal theory” in the 1880s to sequence stratigraphy in the 1980s, geologists have had to persevere to get a new idea tested. Several recent plays that have convincingly converted former “undiscovered resources” into “proven reserves” are basin-centered gas, coal bed methane, and sub-salt exploration. Some older plays, like the early offshore Indonesian exploration, required not only creative geology but also unusual deal making.

Buying reserves or increasing reserves by merging with another company does not discover new oil and gas. Taking the risk to develop a new idea, to finance an unusual idea, and to drill is what will provide the supply needed in the next century.

#### Biographical Sketch

ROBBIE GRIES is President of the American Association of Petroleum Geologists. She is founder and President of Priority Oil & Gas LLC, a Denver-based natural gas production, petroleum exploration and development company operating in Kansas, Colorado, and Wyoming. Priority has also been instrumental in

the development of a one million acre “tight gas sand” project onshore in the cross-border region of Ireland and Northern Ireland, where there is no economic production to date. Robbie has been active in the petroleum industry for 28 years, working initially for Texaco, Inc., then Reserve Oil Inc. She has been an independent since 1980. She has combined the business side of oil and gas with her passion for the science of geology, publishing over 30 professional papers. She has developed and published ideas about drilling beneath thrust Precambrian rocks along the Rocky Mountain uplifts. In the 1980s she pioneered the discovery of a concealed and unexplored Cretaceous basin beneath the San Juan volcanic field in southern Colorado. Robbie is a Director for the Colorado Oil and Gas Association, an Honor Alumnus of Colorado State University and has a Master’s degree in geology from The University of Texas at Austin, where she currently serves on the Advisory Council for the Geology Foundation. □



**GeoForce Corp**  
Prospect Brochures on CDs  
Web Page Design

**Mark R Etheredge**  
Consulting and Generating Geologist  
Certified Computer Consultant

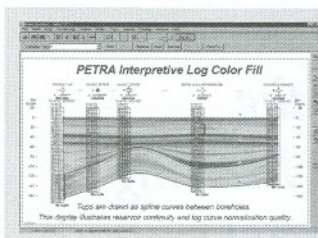
Web site: [www.geoforcecorp.com](http://www.geoforcecorp.com)  
Email: [mark@geoforcecorp.com](mailto:mark@geoforcecorp.com)  
Phone: 713 705-0053



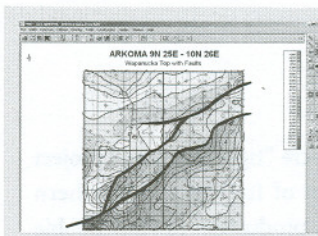
# PETRA<sup>®</sup>

The PC Package with Proven Results

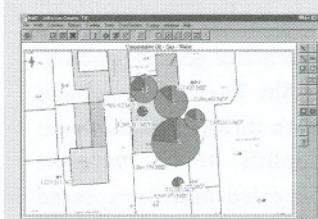
CALL OUR NEW  
HOUSTON OFFICE  
713-862-9449



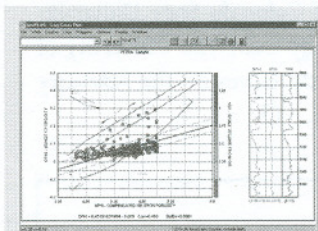
**CROSS SECTION**



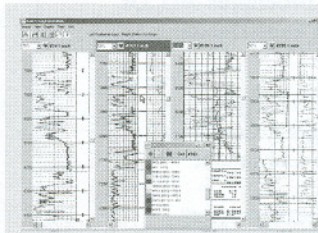
**CONTOUR MAP**



**BUBBLE MAP**



**LOG CROSS PLOT**



**RASTER LOG**

## CROSS SECTIONS

Structure and Stratigraphic  
Digital and Raster Logs  
Deviated Wells  
Interactive Formation Correlation  
Log Curve Editing  
Depth Shifting  
Interpretive Overlays

## MAPPING

Contours w/Faults  
Contour Editing  
Commercial Land Grids  
Geo Referenced Images  
Import Digitized Contours  
Log Curve Maps  
Grid Operations - Volumetrics

## PRODUCTION DATA

Monthly Streams  
Decline Curves  
Cums (first, last, avg.)  
Bubble Maps  
Production Charts  
Compute EUR, RR etc.

## DIGITAL LOGS

LAS and LIS - Editing  
Normalization  
Multi-Well Analysis  
Compute Reservoir Properties  
Cross Plots/Histograms  
Batch Import

## RASTER LOGS

Easy Top Picking  
Auto Raster to Digital  
Raster Log Slip Box  
Quick Net Sands Pick  
Batch Import

## Why PETRA<sup>®</sup>?

- **Easy to Learn and Use**
- **Powerful General Purpose Tools**
- **Exceptional Info Extraction Features**
- **Tightly Integrated Modules**
  - Mapping
  - Cross Section
  - Log Analysis
  - Decline Curve Analysis
- **Built around a powerful Database**
  - Simultaneous Access by Multiple Users
  - Easy to Import Broad Range of Data
  - User Extendable
  - Multi-Well, Multi-Zone
- **Frequent, User-Driven Updates**
- **Geared for Interactive Workflow**
- **PC Based**
  - Win 98/NT/2000/XP
  - Stand-alone and Network Versions



*Prove it to yourself!*

Download a trial version from our web site at  
<http://www.geoplus.com>

or call 888-738-7265 for more product information  
In Houston call 713-862-9449



# SCA

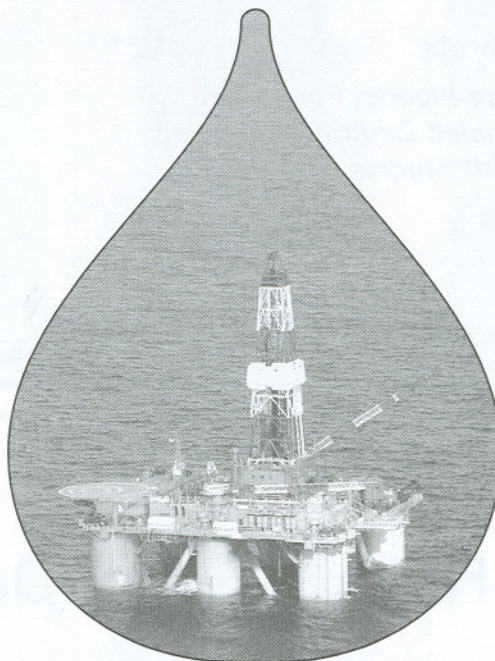
## The Deepwater Consulting and Training Company

Consider Subsurface Consultants and Associates (SCA) for your company's deepwater consulting and training needs. SCA is active in deepwater basins throughout the world:

*West Africa • Brazil • Gulf of Mexico  
Nova Scotia • Newfoundland • Indonesia*

### Consulting Services

- Exploration and Development Studies
- Deepwater Sequence Stratigraphic Interpretation
- Supra Salt and Sub Salt Structural and Stratigraphic Mapping
- Biostratigraphic and Lithostratigraphic Integration
- Deepwater Structural Geologic Interpretation



### Training Courses

- Introduction to Petroleum Geology of Deepwater (Turbidite) Petroleum Systems
- Deepwater Sands and Petroleum Systems Analysis
- Exploration and Production in Turbidite Systems
- Deepwater Reservoir Characterization
- Modern and Ancient Deep Sea Fan Systems

### Schedule of Upcoming Courses at the SCA Training Center\*

5/6 - 5/7  
5/8 - 5/10  
5/13 - 5/15  
5/20 - 5/24  
5/29 - 5/30  
6/3  
6/10 - 6/14  
6/17 - 6/20

Direct Hydrocarbon Indicators, AVO, and Rock Physics  
A Graphic View of Seismic Migration  
Basics of the Petroleum Industry, An Overview for Non-Technical Personnel  
Structural Styles in Petroleum Exploration and Production  
Multiple Bischke Plot Analysis ( $\Delta d/d$ )  
Acquisitions and Divestments  
Geostatistics for Geoscientists and Engineers  
Basic Reservoir Engineering

Register online at [www.scacompanies.com](http://www.scacompanies.com)

\* Located at 2500 Tanglewilde near Westheimer at Gessner, Houston, TX

Please Visit SCA's website for details on our Deepwater Consulting and Training Programs.  
Contact Kent Horstmann for Consulting or Bill Via for Training at:



+1.713.789.2444  
[www.scacompanies.com](http://www.scacompanies.com)

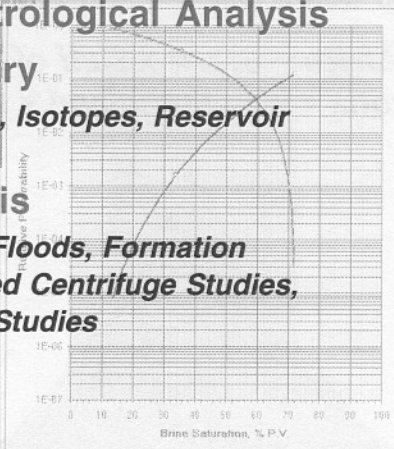






## Laboratory and Consulting Services for the Drilling, Exploration & Production Industry

- **CT Scanning**  
*Core Orientation, Fractures, Sedimentary Structures, and Sand/Shale Ratio*
- **Core Description & Petrological Analysis**
- **Petroleum Geochemistry**  
*Fingerprinting, Biomarkers, Isotopes, Reservoir Continuity Studies*
- **Advanced Core Analysis**  
*Reservoir Condition Core Floods, Formation Damage Studies, Automated Centrifuge Studies, Vp/Vs, NMR Analysis, IOR Studies*
- **Drilling Fluids Analysis**
- **Reservoir Fluids**



### **WESTPORT**

TECHNOLOGY CENTER INTERNATIONAL

6700 Portwest Drive, Houston TX 77024  
Tel: (713) 479-8400 Fax: (713) 864-9357  
sales@westport1.com www.westport1.com

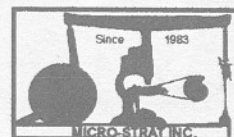
## Gulf of Mexico

### Deep Gas Royalty Relief Data Base

- Released Miocene Paleo-“tops”,
- High Resolution Biostratigraphic Data (F, CN), and
- Seismic Sequence Stratigraphic Analysis Data

*For Information Call MICRO-STRAT INC. 713-977-2120*

**E-MAIL [MSIW3@MICRO-STRAT.COM](mailto:MSIW3@MICRO-STRAT.COM)**







## HOUSTON GEOLOGICAL SOCIETY CONTINUING EDUCATION COMMITTEE

Presents

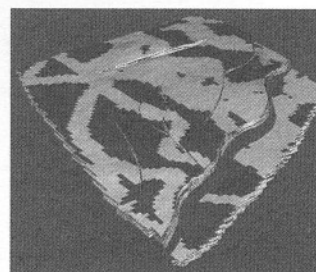
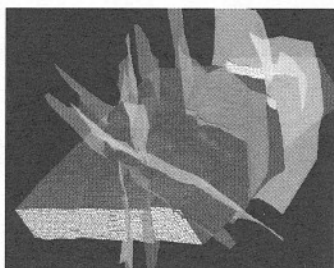
### A Symposium on **Reservoir Modeling**

May 9, 2002

8 a.m. to 4.30 p.m.

Auditorium

One Shell Plaza, Downtown Houston



Are they just pretty pictures or do they represent my geology? How realistic are these models? How compartmentalized are my reservoirs? What is my NPV? Is my geological model scaled properly for simulation? The Reservoir Modeling symposium will provide a basic understanding of the science and technology of reservoir modeling, including selected case histories. The tentative agenda of the symposium is

- Keynote address
- Fault and horizon relationships in building complex 3D reservoir models – *Rob Chelak, Landmark Graphics.*
- Geological modeling of naturally fractured reservoirs, reconciling engineering and geoscience perspectives – *Pierre Chenet, Beicip, Inc.*
- 3D modeling using multiple scenarios and realizations, practical work processes and practices – *Claude Scheepens, Roxar, Inc.*
- Uncertainty assessment in reservoir modeling, an integrated approach – *Emmanuel Gringarten, t-surf, Inc.*
- Methodology and application of reservoir property modeling – *Kexian Yang, Technoguide, Inc.*
- Case history: 3D modeling of a gas field in the overthrust belt of Western Wyoming, challenges and implications – *Bob Klein, Dynamic Graphics, and Mike Miller, BP.*
- Group discussion

**Registration includes attendance, proceedings publication, and refreshments. Registration cost:**

Members\* - \$75.00 (before April 15); Non-Members—\$95.00 (and after April 15); Registration at the door—\$115.00. Information: [sdronamraju@lgc.com](mailto:sdronamraju@lgc.com). Please visit [www.hgs.org](http://www.hgs.org) for any changes.

(\* Member of Houston Energy Council: HGS, GSH, HAPL, SIPES, SPE-GC, SPEE-Houston, SPWLA-GC).

To register for the May 9, 2002, HGS Symposium on **Reservoir Modeling**, send this form and your check made out to **HGS—Reservoir Modeling Course** to: HGS, 10575 Katy Freeway, Suite 290, Houston 77024.

Name: \_\_\_\_\_

Company: \_\_\_\_\_

Address: \_\_\_\_\_

Phone: \_\_\_\_\_

Email: \_\_\_\_\_

Membership: \_\_\_\_\_

Membership Number: \_\_\_\_\_

Amount enclosed: \_\_\_\_\_



# PERSONAL SERVICE. EXPANDED CAPABILITIES.



Core Laboratories



*Standing: Ted Griffin, Wayne Sealey, Larry Bruno, Randy Miller, Tom Swisher, Hugh Peek, Larry Hall, and Michael Santiago.  
Seated: Steve Alexander, Rhonda Cothron, Keith Hudson, and Fred Palumbo.*

**W**e are committed to the success of our client companies.

To enhance the prospects of our clients' success, we have forged our companies into a powerful union. That union combines the distinct talents of three true service companies and makes them available to you through the same sales/service representative who has demonstrated commitment to your success all along.

Invite your personal rep to describe the expanded support he or she can offer you now.

## **CORE PETROPHYSICS**

The Gulf Coast leader in softcore and sidewall core analysis

## **RESERVOIRS INC**

Developers of the Deepwater Gulf of Mexico Study, the world's largest and most comprehensive study of deepwater reservoirs

## **CORE LAB PETROLEUM SERVICES**

The world's largest and most technologically advanced independent provider of petrophysical services to describe the reservoir system

© 2001 Core Laboratories, Inc.

**24-Hour Wellsite Service and  
Sample Pick-up Hotline: 713-328-2121**

Houston Advanced Technology Center  
6316 Windfern  
Houston, Texas 77040  
713-328-CORE



[www.corelab.com](http://www.corelab.com)

**Our new Brazil lab is open.  
Contact Moyses Lachter to arrange a tour.**

Rua Sargento Aquino 287  
Olaria - RJ - Brazil 21021-640  
55-21-38689888  
[mlachter@corelab.com](mailto:mlachter@corelab.com)

New Orleans • Lafayette • Corpus Christi • Midland • Bakersfield • Duncan • Anchorage



Monday, May 20, 2002

Westchase Hilton • 9999 Westheimer  
Social 5:30 p.m., Dinner 6:30 p.m.

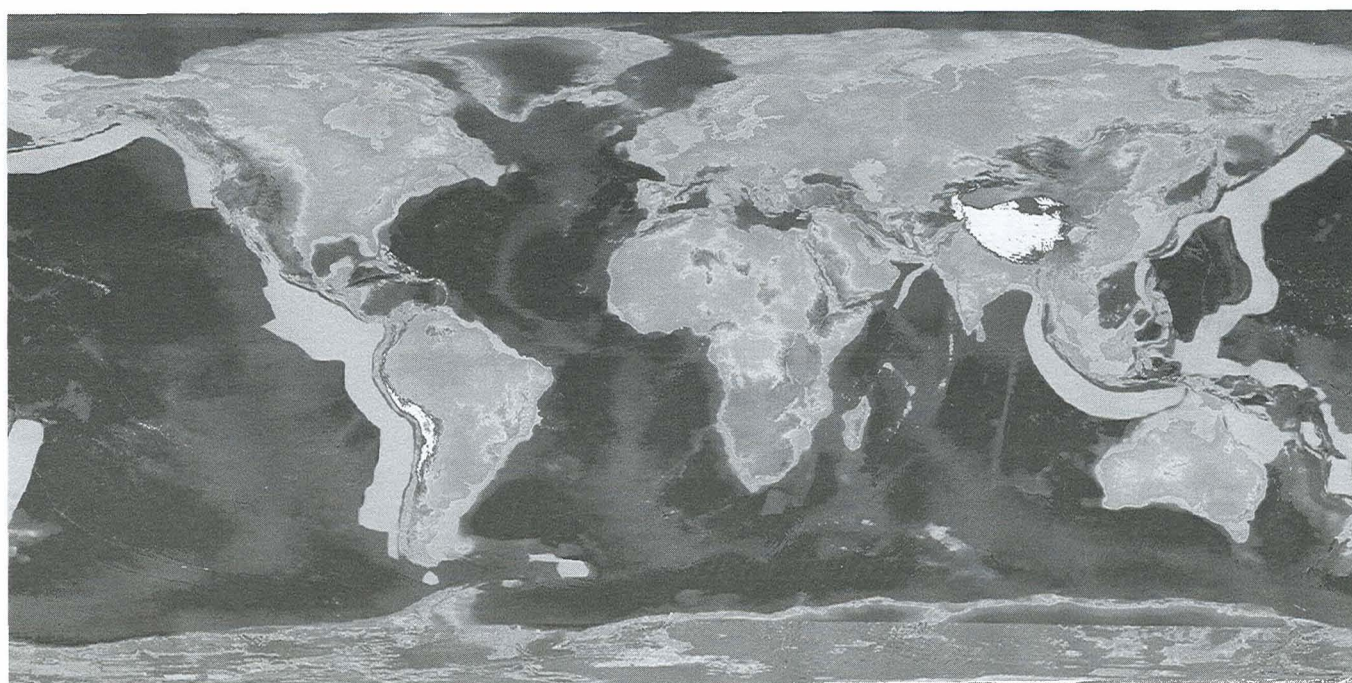
Cost: \$25 Preregistered members; \$30 Nonmembers & Walk-ups

Make your reservations now by calling 713-463-8920 (5-0-3) or  
by e-mail to Joan@hgs.org (include your name, meeting you  
are attending, phone number, and membership ID#).

## International Explorationists Dinner Meeting

by Christopher R. Scotese,  
PALEOMAP Project,  
University of Texas  
at Arlington

### 3D Paleogeographic and Plate Tectonic Reconstructions: the PALEOMAP Project is Back in Town



**Figure 1.** Reconstruction of present-day bathymetry and topography in paleo-coordinates for the late Miocene.

The PALEOMAP Project is known for its synthesis of the plate tectonic, paleogeographic, and paleoclimatic history of ocean basins and continents during the last 1,100 million years, and the illustration of Earth history through maps, computer animations, and Geographic Information Systems (GIS). In this talk, Chris will present his latest 3D paleogeographic and plate tectonic maps and animations (*see cover illustration of Paleogeography and Bathymetry of the Late Cretaceous 80 MMYA*).

Global plate tectonic, paleogeographic and paleoclimatic reconstructions will be presented for the early Miocene, Late Cretaceous, Permian, and Devonian. These reconstructions use 3D paleotopographic and paleobathymetric information to represent the surface of the Earth and the shape and depth of the

ocean basins. Each map is composed of over 6 million pixel-points that capture digital elevation information at a 10 x 10 km geographic resolution and 40 meter vertical resolution. This quantitative, digital approach to paleogeographic modeling permits new ways to visualize and analyze the changing surface of the Earth through time using standard GIS (ESRI 3D Analyst, Spatial Analyst), 3D modeling, and computer animation techniques.

The process of building a 3D paleogeographic map begins with the digital topography and bathymetry compiled by NOAA, the BEDMAP Project, and the IBCAO Arctic Project. The topographic and bathymetric information is gridded at a 6-minute resolution, and the individual data points (pixel-points) are

International Explorationists continued on page 15



# TGS NOPEC

G E O P H Y S I C A L C O M P A N Y



***Exploring a world of opportunities.***

- *Non-Exclusive Seismic Surveys*
- *Seismic Data Acquisition*
- *Seismic Data Processing*
- *Integrated Regional Interpretations*
- *Gravity / Magnetic Data & Services*

**USA**  
2500 CityWest Blvd. Suite 2000  
Houston, Texas 77042-3018  
Phone: (713) 860-2100  
Fax: (713) 334-3308

**NORWAY**  
Baarsrudveien 2  
N-3478 Naersnes, Norway  
Phone: +47 31 29 20 00  
Fax: +47 31 29 20 10

**UK**  
Graylaw House, 21/21A  
Goldington Rd. Bedford, MK40 3JY, UK  
Phone: +44 (0) 1234 272407  
Fax: +44 (0) 1234 272408

**AUSTRALIA**  
Level 5, MLC House, 1100 Hay Street  
West Perth 6005 Western Australia  
Phone: +61 8 9480 0000  
Fax: +61 8 9321 5312

[www.tgsnopec.com](http://www.tgsnopec.com)



## International Explorationists continued from page 13

rotated back to their paleopositions using the global plate tectonic model of the PALEOMAP Project. The resulting map is reconstruction of present-day bathymetry and topography in paleo-coordinates (late Miocene, Figure 1).

In the next processing steps, the digital elevation and bathymetric values are corrected to take into account the complex effects of thermal subsidence, glacial rebound, tectonic and volcanic activity and erosion. The result is a revised global paleotopographic and paleobathymetric surface. To complete the 3D paleogeographic model the new topographic surface is digitally "flooded" by raising or lowering sea level according to the estimates from eustatic sea level curves.

The new paleogeographic map raises interesting geological questions. For instance, the shorelines shown in the early Miocene map (Figure 2) are familiar but not identical to today's coastlines. Florida is flooded, as are the molasse basin of the Alps, the Persian Gulf foredeep and the peri-Caspian region. But surprisingly, so are the Amazon and Parana basins. Conversely, if sea level were higher, one might expect that Southeast Asia would be flooded. However, geologic evidence indicates that Southeast Asia was emergent during the early Miocene. This suggests that dynamic plate tectonic forces associated with subduction in the Java-Sumatra trench may be "pulling-down" the leading edge of Indonesia.

The digital topographic and bathymetric models presented here are currently being used for paleoclimatic and paleoceanographic simulations. They provide the framework and foundation for a detailed and quantitative modeling of Earth surface processes since the late Precambrian.

### Biographical Sketch

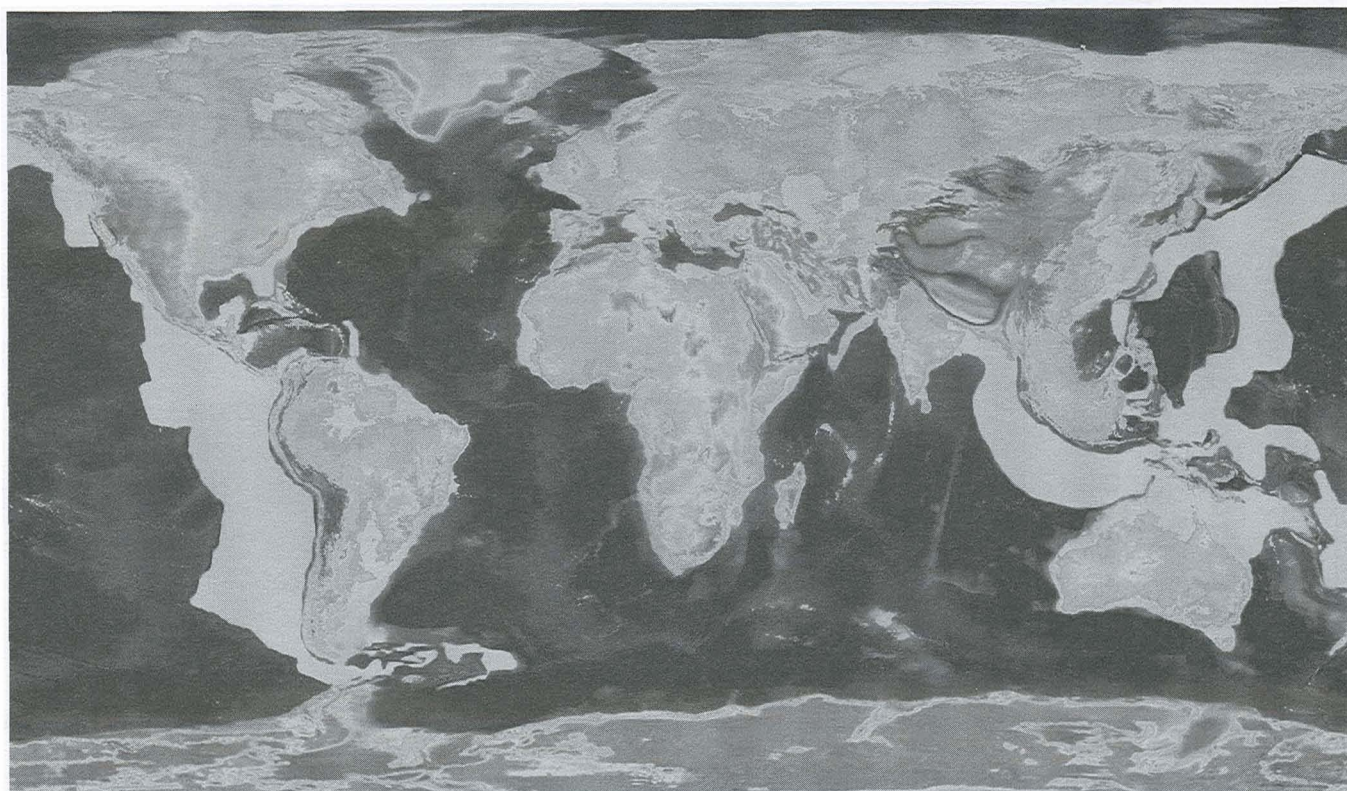
CHRIS SCOTese is professor of geology at the University of Texas at Arlington, where he teaches global tectonics, basin analysis, and GIS. For more than 25 years, he has been making maps and animations showing the plate tectonic, paleogeographic, and paleoclimatic evolution of the continents and ocean basins. His maps can be found in *National Geographic*, *Scientific American* as well as in numerous scientific books and journals.

He received his PhD at the University of Chicago, started the PLATES Project at Institute for Geophysics (Austin), was a senior research geologist at Shell Development Company (Houston), and together with Malcolm Ross developed GIS software to produce plate reconstructions (PALEOMAP Foundation). His award-winning website, [www.scotese.com](http://www.scotese.com), describes with maps and animations the current research work of the PALEOMAP Project.

### You can contact Chris at:

PALEOMAP Project, University of Texas at Arlington,  
Arlington, Texas, 76019

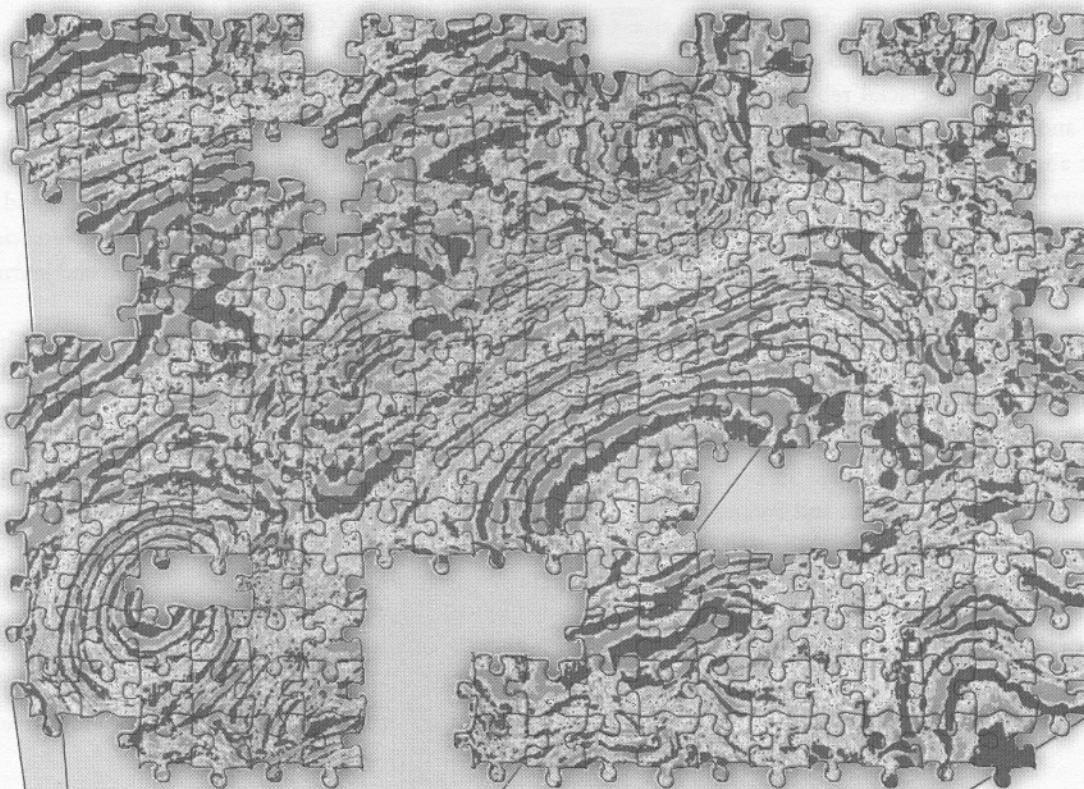
Email: [chris@scotese.com](mailto:chris@scotese.com) website: [www.scotese.com](http://www.scotese.com) □



**Figure 2.** Paleobathymetry and topography for the early Miocene.



# Missing a few pieces of the seismic puzzle?



**Fill in the blanks  
from our extensive 3D  
Gulf of Mexico database.**



**FAIRFIELD**  
INDUSTRIES

Houston 281/275-7500  
New Orleans 504/525-6400  
Denver 303/716-1630  
[www.fairfield.com](http://www.fairfield.com) (800)231-9809

**Proud to be  
an American  
company**



# Review of Late Jurassic Depositional Systems and Potential Hydrocarbon Plays, Northern Gulf of Mexico Basin

## Abstract

Post-salt Upper Jurassic siliciclastic and carbonate rocks in the East Texas–North Louisiana–Mississippi region record the early post-rift evolution of the Interior Zone rift basins of the northern Gulf of Mexico Basin. Four major river systems were fixed in space but variable in supply rate; they carried sand and mud in from the northwest (ancestral Red River), the north (ancestral Ouachita River), the northeast (ancestral Mississippi River), and the east (ancestral Alabama River). Shoal-water carbonate deposits formed when siliciclastic inputs were low and shallow-water, high-energy conditions prevailed—usually in association with basement highs, salt swells and abandoned deltaic shelf margins.

Smackover shoal-water carbonates formed within an extensive carbonate ramp from south-central Arkansas to central Texas and were influenced by initial salt movement. Subsequent Haynesville-age Gilmer carbonate shoals in Texas rimmed rift-related high blocks, as well as highs formed by early salt movement. Siliciclastic sedimentation progressively dominated east of Shreveport, and submarine fans developed in association with a lowstand episode. During early Cotton Valley time, a major southeastward advance of the ancestral Red River delta formed the Taylor and Bossier sand series, while to the east, lower Terryville shoreline sands began to prograde southward in front of an expanding lagoon. During late Cotton Valley time, continued clastic sedimentation formed wave-dominated deltas in Texas and upper Terryville strike-fed sandstones in north Louisiana. At the close of Cotton Valley deposition in the earliest Cretaceous, regional transgression allowed Knowles carbonates to “colonize” the abandoned shelf edge and form a thick shelf-

edge reef complex on its seaward slope. The significant “Calvin” lowstand wedge of sandstones was deposited offshore of this edge in Louisiana during a subsequent major sea-level fall, and was then covered by Winn carbonates deposited during the subsequent sea-level rise.

High-potential exploration plays remain in Upper Jurassic strata. Smackover and Buckner/Gilmer shoals have produced over 10 trillion cubic feet of gas (TCFG) and 750 million barrels of oil (MMBO) in East Texas and North Louisiana, but large segments of the complex atolls along the Sabine Uplift have not been defined. Complex shoals may rim old rift-related highs such as the Sabine and Wiggins highs. The Gilmer (“Cotton Valley Lime”) pinnacle reefs of the Robertson-Leon trend may develop (in one form or another) over a broad swath of east-central Texas into westernmost Louisiana. Haynesville-age submarine fans may extend eastward into Mississippi. Updip Cotton Valley is an established 10-TCF tight-gas sandstone play in Texas and Louisiana, but its basinward extensions have high untapped potential. Significant high-quality Upper Cotton Valley production similar to the North Louisiana “blanket sands” may still be found in central Mississippi. The earliest Cretaceous (Knowles/Calvin/Winn) margin is poorly tested. Calvin-like sandstones of the lowstand wedge should occur in east-central Texas and in southwestern Mississippi.

## Biographical Sketch

DR. THOMAS EWING is a geologist and geophysicist with 21 years of experience in hydrocarbon exploration and research in geology and geophysics. He received a BA in Geology from the Colorado



# Houston Geological Society 19th Annual\* (\*sort of)

## HGS SKEET SHOOT

Saturday May 11, 2002

American Shooting Centers

16500 Westheimer Parkway, Houston, Texas (281)556-8199

### \$60 PER SHOOTER - 50 TARGETS



Shooting starts at 8:00 AM and continues through the afternoon.  
BBQ lunch will be served.

- Your entry fee includes targets, shells, lunch, and refreshments.
- We will provide 12 or 20 gauge ammunition; you may not use any other ammunition!
- NSSA and GHGC safety rules will apply. Eye and ear protection are mandatory.
- All shooters will be required to sign liability disclaimer at the gun club.
- Scoring will be by Lewis class system. Ties will be settled by long run.

**For more Information, Contact: Kenneth Mohn at 713-369-5859 or [kmohn@fugro.com](mailto:kmohn@fugro.com)**

### Entry Form

Name: \_\_\_\_\_

Daytime Phone: \_\_\_\_\_ Residence phone: \_\_\_\_\_

Company: \_\_\_\_\_

Address: \_\_\_\_\_

Indicate ammunition required: 12 gauge 20 gauge

Please submit registration forms to: Houston Geological Society  
10575 Katy Freeway, Suite 290  
Houston, TX. 77024

Preferred shooting time: 8:00AM 9:00AM 10:00AM 11:00AM 12:00PM 1:00PM  
(please circle one of these times)

If you wish to shoot with a specific squad (of no more than 5 shooters), please submit all forms together. Include a check for \$60 for each shooter in your group. Make checks payable to HGS Entertainment Fund.



## Luncheon Meeting

continued from page 17

College in 1975, an MS in geochemistry from New Mexico Institute of Mining and Technology in 1977, and a PhD in geological sciences from the University of British Columbia in 1981. Dr. Ewing was a research geologist for over four years at the Texas Bureau of Economic Geology. While there he was in charge of geologic analysis of Gulf Coast geopressed reservoirs and geothermal resources, served as a co-author of the "Atlas of Texas Oil Reservoirs", and served as compiler of the Tectonic Map of Texas. Since 1985 he has been co-owner with Linda Ewing of Frontera Exploration Consultants, Inc., a San Antonio-based consulting company. He has worked with Venus Exploration, Inc. since 1985 for its ongoing, successful exploration efforts in the Yegua Trend of the Gulf Coast Basin, Cotton Valley trend of Texas and Louisiana, West Texas, and Kansas; he is now a Senior Explorationist at Venus. Dr. Ewing is a member of many regional and national professional societies, is a Certified Petroleum Geologist (#4538), and served as Treasurer and Vice-President of the AAPG Division of Professional Affairs. He is an AAPG Delegate from the South Texas Geological Society, and served as Vice-Chairman of the AAPG House of Delegates in 1992-3. He also served as President of the Energy Minerals Division of the AAPG, and in that position held a seat on the AAPG Advisory Council. Dr. Ewing chaired the Edwards Aquifer Committee of the South Texas Geological Society in 1988-90, which issued a call for geologic and technology-based aquifer management. He served as President of the South Texas Geological Society in 1990-1, and as General Chairman of the 1996 GCAGS Convention in San Antonio. Tom has spoken extensively at local, regional, and national geological meetings and has authored or co-authored over 70 published papers and abstracts. Among other awards, he has twice received the Gulf Coast Section AAPG Levorsen Award (1982 and 1999), and the GCAGS Distinguished Service Award in 1993. □

## Shreveport Geological Society Field Studies Series

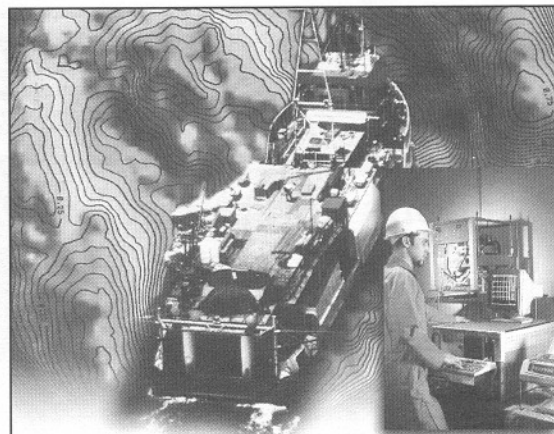
**A CD-ROM collection of 8 volumes  
of field studies!**

**On sale now from the Shreveport  
Geological Society  
at the low cost of \$95.**

**For information contact:  
Steve Cowgill,**

**Cowgill & Assoc., LLC  
333 Texas Street, Suite 516,  
Shreveport, LA. 71101; or by**

**email at [cowgill1@bellsouth.net](mailto:cowgill1@bellsouth.net) or  
phone 318-429-2170**



## Attention To Detail From Acquisition Through Your Geologic Model

Simply put, Fugro-LCT provides the finest marine gravity and magnetic services worldwide. Anywhere, anytime.

Fugro-LCT utilizes the newest generation of gravity and magnetic digital instruments to reduce noise and capture signal. And, proprietary tools to record (GunMag™), handle (Unison™), track (Integrav™) and optimize (ZEN™) the signal from start to finish.

Fugro-LCT has an extensive data library of the Gulf of Mexico, South America, North Sea and Atlantic Canada. And, with worldwide offices, Fugro-LCT can communicate with clients and mobilize at a moment's notice.

In the tough marine environment, Fugro-LCT cuts through the clutter to give you precise, detailed data of your basin or project.



Houston  
713-369-6100

UK  
+44-(0)1908-286100

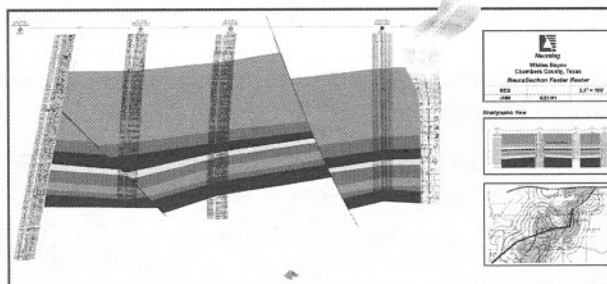
Singapore  
+65 543 0200

[www.lct.com](http://www.lct.com)

MARINE ACQUISITION & PROCESSING

HGS Luncheon Meeting

## Turning Paper into Petroleum



## Rapid Interpretation

### NeuraSection and NeuraScanner

Create and utilize raster and digital data for rapid interpretation and presentation on your PC, Landmark or GeoQuest workstation or other applications.

**Call for a presentation CD or evaluation  
800-364-8728 or visit [www.neuralog.com](http://www.neuralog.com)**



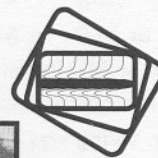
NEURALOG, INC.

NeuraLog NeuraMap NeuraSection NeuraScanner NeuraView

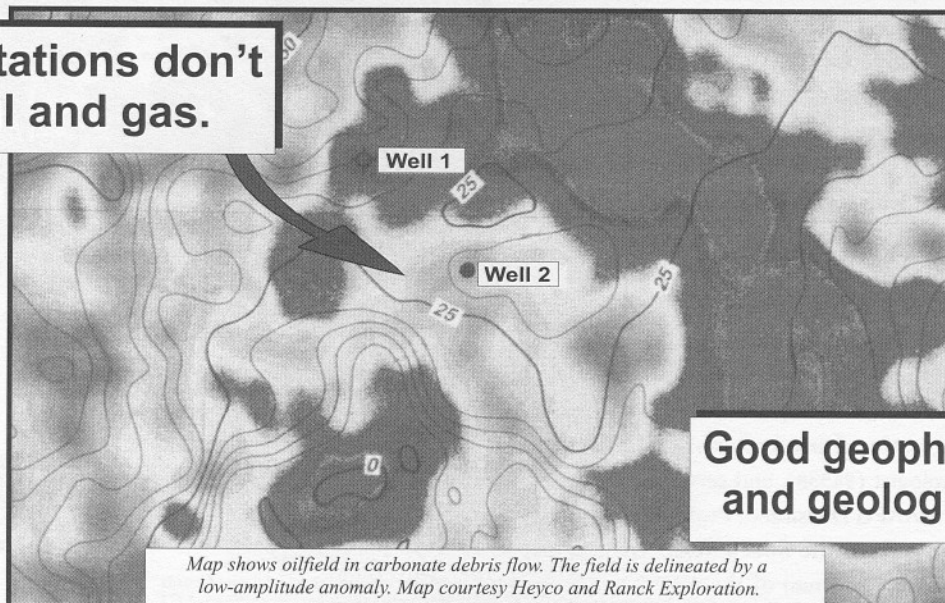


# SEIS-STRAT SERVICES, INC.

A Full Service Geophysical and Geological Consulting Group



**Workstations don't  
find oil and gas.**



**Good geophysicists  
and geologists do!**

*Map shows oilfield in carbonate debris flow. The field is delineated by a low-amplitude anomaly. Map courtesy Heyco and Ranck Exploration.*

**Call Jory A. Pacht at (713) 532-5588 for help with your 3D and 2D seismic interpretation and exploration and development geology needs.**

11111 Wilcrest Green; Suite 203; Houston Texas 77042 Ph: (713) 532-5588; Fax: 532-5599



## BAYOU CITY OIL AND GAS COMPANY

2400 AUGUSTA PLACE, SUITE 212 • HOUSTON, TEXAS 77057

**Looking to Purchase Low to Moderate  
Risk Prospects in the "Idea" Stage for  
Finders Fee & Override**

**Seeking to Participate as a  
Non-Operator in Ready to Drill Prospects**

**Prospects Must Be Located in Texas or  
Louisiana Gulf Coast**

Contact:

**Jim Gedeon or R. R. "Royal" Rische**

(830) 685-3100 • Fax (830) 685-3822 or  
(713) 278-2300 • Fax (713) 278-2306

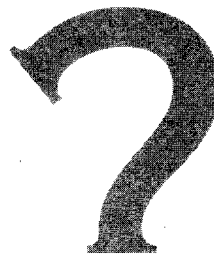
## EXPLORATION DATA SERVICES of the GULF COAST

- ★ **REGIONAL GEOLOGICAL MAPS OF THE  
GULF OF MEXICO**
  - Two pertinent horizons
  - 1" = 4000' scale
  - Maintained up-to-date
  - 85-95% of all wells correlated
  - Combined subsurface and geophysical interpretation
  - Producing horizons in all fields noted
  - Pipelines & fairways
  - Available for a small monthly fee/service area
- ★ **CROSS-SECTIONS**
  - Regional network
  - Available for a minimal monthly fee
- ★ **WELL INFORMATION ON COMPUTER**
  - Well identification information including API number
  - Legal surface and bottomhole locations
  - Tops & Faults - measured & TVD depths
  - Formation at TD
  - Initial Perforations
  - Available to customers of the mapping service
  - Download to your workstation

P.O. BOX 1480 • LIVINGSTON, TX 77351  
(936) 646-4639 • FAX: (936) 646-4284



**June 4**      **Social**  
**June 20**    **Dinner Meeting**  
**July 4**      **Horse Racing**  
**August 1**   **Special Dinner Meeting**



## Who Are We and What Do We Do?

The NeoGeos are a group of Geologists, Geophysicists, Hydrogeologists, Engineers, Environmental Geoscientists and anyone else who practices or has close connections with the geosciences (usually associated with the oil industry), who meet regularly to socialize, network, and meet other young professionals in the Houston Area. Many people have heard of us, but new hires are coming in to Houston all the time, so we thought we would give a brief outline of what the NeoGeos do.

The group was started in 2000 by Andrea Adams (Hess) & Kelly Latter (BP), themselves young professionals, as a means for people new to the profession, and new to Houston, to meet other "new hires". Denise Stone from the HGS helped the idea become reality in the eyes of the HGS. The group started with a handful of members, and our size has grown by word of mouth and thanks to the hard work of the founders and the support of the HGS. Our success is measured by the fact that we now have a sister group being started in New Orleans.

Our guidelines suggest that members should have less than five years experience in the industry or have received a degree in the last five years. Interns, graduates, those searching for employment, or those practicing the geosciences are all welcome at our events. We try to meet at least once a month, and all events that we hold are informal. We currently have over 250 members in over 30 different companies, from the large multinationals to the small independent oil companies and consultancies, and many students.

The NeoGeos is a great way to meet young people from outside your company, so why not come along to one of our events and see what we do. Events include: short courses, socials (monthly), dinners (bimonthly), guest speakers, field trips, site visits, volunteering (Houston Museum of Science, Earth Science Week, AAPG), beach clean-ups, BBQ's and picnics, newsletters, Website, HGS events involvement, student expos.

### **News and Upcoming events**

March marked the AAPG Convention held in Houston. NeoGeos were asked to volunteer at the conference, and many NeoGeos attended in a registrant role. From a personal perspective the conference was great, but from a NeoGeos perspective it was brilliant! The NeoGeos had a social at the Front Porch Pub in midtown on Tuesday evening of the convention. This was a great success, with over 30 people attending. There were some visitors from out of town and also some from overseas. It is always great to see any young professionals, even if they are visiting, as it gives us all a chance to swap notes on possible places that we might be posted to! Many thanks to those who did volunteer at the convention, either sitting at the information desk, in the International Pavilion, or helping with poster sessions and short courses. I know I had great fun, and met many interesting people.

Events coming up in May include a social and a BBQ and hike. The social will be held at Champps Americana Sports Bar on Thursday, May 9. The bar is in the Uptown Mall, just north of the Galleria, on the west side of the 610. Exit on San Felipe and head west, then north on Post Oak Blvd, and take a left on to Uptown Park Blvd. The Mall is on the right, and the bar is on the far side. We will be there from 5:30 p.m. onwards. The address is 1121 Uptown Park Blvd, 713-627-2333.

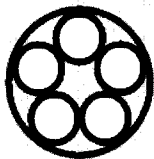
For those who love the outdoors, we are organizing a hike and afternoon picnic/BBQ on Saturday May 18. This will be at Brazos Bend State Park. The park has several miles of trails for both walking and mountain biking, and you can meet the "locals" too, as this is the prime place to see alligators! We will meet at the park at noon, and do a couple of the trails, then settle down for a quiet afternoon picnic. So bring your spouse, your friends, your pets (on a leash!), a Frisbee, and some food and drinks for the BBQ! We will provide the charcoal. The park

*NeoGeos continued on page 22*



# Fairfield Industries Data Processing Division

Tripled size since  
August, 2001  
to 2400 GigaFlops



Expansion  
is almost  
**UNLIMITED!**

- Super Cluster Environment  
**~~1000 CPUs~~ & Growing!**
- Full Service Processing
- 3D Kirchhoff Pre-stack  
Time & Depth Imaging
- 3D Finite Difference  
Pre-stack Depth Imaging

14100 Southwest Frwy, Ste 100  
Sugar Land, Texas 77478  
Tel: 281-275-7500  
Fax: 281-275-7660  
janderson@fairfield.com

## NeoGeos

continued from page 21

is about a 40 minute drive out to the southwest of Houston, heading out on the Hwy. 59 (SW Freeway). Follow the brown signs to the park that start after Sugar Land. The park is about 20 miles southeast of Richmond on FM 762, or travel south from Houston on State Highway 288 to Rosharon, then west on FM 1462. If you want to carpool contact Helena Griffiths on 713-839-9483.

### Contact us

For more information on any of these events please do not hesitate to contact Helena Griffiths at 713-245-7978, or send an email to NeoGeos@ev1.net. We are always looking for new ideas for events and new members, so come along to one of our meetings and see what we are all about. □

*Helena Griffiths & the NeoGeos committee*

## HGS Office Has a New Location!

10575 Katy Freeway, Suite 290  
Houston, Texas 77024

## The Workstation Place

16360 Park Ten Place, Suite 102  
Houston, Texas 77084

281 492-1856  
SSTARR9711@aol.com

Affordable NT Workstations featuring SMT Interpretation Software ... Complete range of color inkjet plotters...

Presentation and conference room facilities included. Other NT software is available by special arrangement.

### Rates you can afford:

- \$190.00 per day on a weekly basis
- \$150.00 per day on a monthly basis
- \$135.00 per day on a quarterly basis

Data loading and software assistance are available at cost.

The ultimate in confidentiality ... removable project hard drives under your direct control, if desired.

**Experienced interpreters are available to interpret your projects.**

We invite you to come by ... call on the phone ... or drop us an email

Thank you,  
Steve Starr, The Workstation Place





# LiveQuest

Far more than applications—it's a dynamic collaboration solution.

The LiveQuest\* application service provider (ASP) solution is the path to better business. It offers the fastest way to collaborate in advanced E&P interpretation, economic and risk analysis.



In its first year of operation, LiveQuest delivered the applications, data, processes, expertise and solutions to more than 500

E&P professionals. In the same office, same city, or around the world, *your* team can work better and arrive at better decisions...together.

Transform the way you work into the best possible productivity process. Right now. [www.livequest.net](http://www.livequest.net)

## Schlumberger

\*Mark of Schlumberger

[www.sis.slb.com](http://www.sis.slb.com)



# May 2002

Sunday

Monday

Tuesday

Wednesday

<b>Members Pre-registered Prices:</b> General Dinner Meeting .....\$25 Env. & Eng. ....\$25 Luncheon Meeting .....\$25 International Explorationists .....\$25 North American Expl. ....\$25 Emerging Technology .....\$25 Nonmembers and walk-ups. ....\$30	<b>Reservations:</b> Reservations for technical meetings must be made or cancelled <u>by noon on the last business day before the event</u> . Voicemail and automated reservations are electronically marked with the date and time they are made. If you make your reservation by email, a reply is sent confirming it. If you do not receive one, <b>assume it has not been made</b> and try again. Once name tags and lists are prepared, no more reservations can be added even if they are sent. <b>The new reservation phone number is 713-463-8920.</b>		1
5	6	7 <b>HGA Spring Luncheon</b> See page 43 <div style="text-align: center;">← O T C C O N F E R E N C E →</div>	8
12	13 <b>HGS General Dinner Meeting</b> by Robbie Gries <i>Thinking "Out of the Box"—The Role of the Geologist in Meeting Future Energy Demand</i> See page 7	14	15
19	20 <b>HGS International Dinner Meeting</b> by Chris R. Scotese <i>3D Paleogeographic and Plate Tectonic Reconstructions: The PALEOMAP Project is Back in Town</i> See page 13	21	22
26	27 <b>Memorial Day</b> <b>HGS Office Closed</b>	28	29 <b>HGS Luncheon Meeting</b> by Thomas Ewing <i>Review of Late Jurassic Depositional System and Potential Hydrocarbon Plays, Northern Gulf of Mexico Basin</i> See page 17

## The source for solutions to geological, log evaluation, and drilling / completion problems

- Unconsolidated core analysis services / core handling ■ Improved sidewall core analysis
- Formation damage evaluation ■ Capillary pressure and resistivity studies
- Laser particle size distribution ■ Custom photography and digital imagery
- X-ray diffraction, SEM, and thin-section petrography



Core Petrophysics, Inc.— 6316 Windfern, Houston, Texas 77040 (713) 328-CORE  
 Core Petrophysics, Inc.— 1217 Dealers Ave., New Orleans, Louisiana 70123 (504) 733-6583  
 Core Petrophysics, Inc.— 5820 Highway 90 East, Broussard, Louisiana 70518 (337) 837-8616



# GEOEVENTS

Thursday

Friday

Saturday

	3	4
HGS Symposium Reservoir Modeling <i>See page 11</i>	10	11 HGS Skeet Shoot <i>See page 18</i>
NeoGeos Social <i>See page 21</i>		
SPE-GCS Petroleum Leadership Conference <i>See page 35</i>	17	18 NeoGeos Picnic and BBQ <i>See page 21</i>
SIPES Luncheon Petroleum Club		
GeoWives Luncheon <i>See page 43</i>		
	24	25
	31 HGS Tennis Tournament <i>See page 27</i>	<b>Reservation Codes</b> Use these codes to make voice mail meeting reservations. <b>Call 713-463-8920</b> Dinner Meeting (5-0-1) Environmental and Engineering (5-0-2) International Explorationists (5-0-3) North American Explorationists (5-0-4) Luncheon Meeting (5-0-5) Emerging Technology (5-0-6)



## Upcoming GeoEvents

**June 6-8, 2002**

AAPG SW Section Convention,  
Ruidoso, New Mexico, *see page 39*

**June 15, 2002**

Guest Night at the Houston  
Museum of Natural Science,  
*see page 4*

**June 19, 2002**

RMAG Coalbed Methane  
Symposium, Denver, Colorado,  
*see page 42*

**June 12-20, 2002**

Grand Canyon Field Trip,  
*see page 29*

**July 4, 2002**

NeoGeos Horse Racing,  
*see page 21*

**August 1, 2002**

NeoGeos Special Dinner Meeting,  
*see page 21*

**August 8, 2002**

The 6th Annual  
Summer Technofest, *see page 30*

**August 27-29, 2002**

APPEX, AAPG Prospect and  
Property Expo, *see page 41*

**September 17-18, 2002**

Petroleum Exploration Society of  
Great Britain—Call for Papers  
*see page 29*

**September 23, 2002**

HGS Golf Tournament, *see page 29*

**June 22, 2002**

GSH/HGS Saltwater Fishing  
Tournament, *see page 37*

**October 22-25, 2002**

9th Annual Petroleum  
Environmental Conference,  
Albuquerque, New Mexico,  
*see page 6*



## Petro-Temps Inc.

"Your Petroleum Placement Professionals"

2500 Tanglewilde, Suite 480  
Houston, Texas 77063  
(832) 251-0553  
(832) 251-0157 Fax

909 Poydras St., Suite 1450  
New Orleans, LA 70112  
(504) 592-4007  
(504) 522-9097 Fax

Technical and Administrative Professionals  
with Exploration & Production Experience

*Engineers • Geologists • Geophysicists • Landmen • Petrophysicists • Technicians*  
*Administrative Assistants • Clerks • Data Processors • Secretaries*

www.petro-temps.com

Houston • New Orleans



# Decision-Support Solutions

## *For the Way You Work*

IHS Energy Group is the leading source of worldwide oil & gas information and decision-support solutions. We understand the true value of information depends on having the right information, being able to find it quickly, analyze it accurately and apply it immediately.

**Information**—Current activity reports and unparalleled global databases provide insights into critical industry issues. Information is conveniently accessed through our Hosting Center, the Internet, CD and hardcopy reports.

**Applications**—A full range of economic, cost, engineering and production analysis software solutions enable faster and more informed decisions.

**Consulting & Services**—In-depth expertise provides independent investment decision support across upstream and downstream industries. These services are supported by our unique in-house data and applications.

## *Your Competitive Advantage...*

IHS Energy delivers the right information, powerful applications and expert consulting to maximize your reserves, operations and investment potential.

888-OIL-DATA (U.S.)  
+44 (0) 1666 501248 (U.K.)  
877-495-4473 (Canada)  
[www.ihsenergy.com](http://www.ihsenergy.com)

**IHS  
ENERGY  
GROUP**

Copyright 2001. All rights reserved. Petroleum Information/  
Dwights LLC d/b/a IHS Energy Group. All trademarks belong to  
Petroleum Information/Dwights LLC.

Petroleum Information/Dwights LLC • PI (ERICO) • Petroconsultants S.A. • IEDS • MAI Consultants • AccuMap

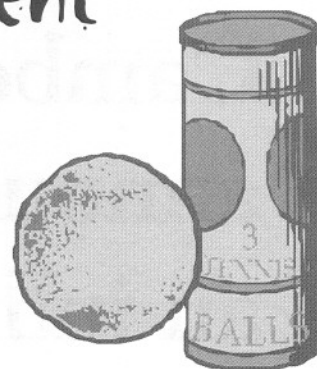




# HGS Tennis Tournament

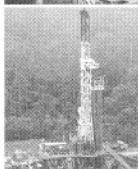
Friday, May 31, 2002

Location: Houston Racquet Club  
10709 Memorial Drive  
Time: 11:45 a.m. to 5:00 p.m.  
Prizes: Div. A & B Prizes



Send a check for \$40.00 and entry form to: DAVIS BROS.  
1221 McKinney, Suite 3100, Houston, Texas 77010  
Attn: Ross Davis, Tournament Director  
Call (713) 659-3131 with questions; Fax (713) 659-8070

Name: \_\_\_\_\_  
Address: \_\_\_\_\_  
Phone: \_\_\_\_\_ Work Phone: \_\_\_\_\_  
Rank (A, A-, B): \_\_\_\_\_ E-Mail: \_\_\_\_\_



## Up-To-Date On Your Training Needs?

These Popular NExT Courses Are Still Available!

### H O U S T O N

Fundamentals of Rock Physics	May 13-17
Subsurface Integration Field Trip & Workshop (Texas/New Mexico)	May 19-23
Introduction To The Petroleum Geology Of Deepwater Depositional Systems	June 10-12
Basics of Geologic Reservoir Characterization for Geophysicists and Petroleum Engineers	June 17-18
Integrated Reservoir Analysis	June 24-July 5
Advanced Formation Evaluation and "Quick-Look" Well Log Analysis	Sept. 23-27
The Business of Petroleum	Oct. 21-25



**What's NExT? Training solutions for today.**

**[www.next.ie](http://www.next.ie)**



The University  
of Oklahoma

**Schlumberger**

Contact Diane Drake at  
[info-west@nexttraining.net](mailto:info-west@nexttraining.net)  
or 979.485.0477.



Cambe  
announces  
an individual  
offshore  
membership  
with checkout  
privileges for  
only \$475 per  
month. Call  
Billy King at  
(713)369-3838  
for details.

1500 Gray Street  
Houston, Texas 77002  
(713) 659-8363  
Fax (713) 757-0179  
[www.cambe.com](http://www.cambe.com)

**Cambe**  
Geological Services





## THE HGS GRAND CANYON GEOLOGY FIELD TRIP

SCHEDULED FOR  
JUNE 12-20, 2002

MAY HAVE A FEW OPENINGS REMAINING.

COST IS \$1800.

PLEASE CHECK WITH THE  
HGS OFFICE OR DAVE LAZOR  
(LAZOR@AOL.COM) FOR OPENINGS

## SKYLINE ENERGY, LLC



*Is actively seeking open acreage drilling prospects  
in Texas, Louisiana, Mississippi and New Mexico  
Finders Fee and Overriding Royalty*

Contact

Donnie Jones

(281) 481-0881

**PESGB**

Petroleum Exploration  
Society of Great Britain

PESGB-HGS:

FIRST ANNUAL INTERNATIONAL SYMPOSIUM



## "Africa, The Success Will Continue"

17-18 September 2002

Millennium Hotel, Grosvenor Square, London

If you are involved with Africa you will not want to miss this symposium. Leading speakers from across the world will be attending. The convenors are Ray Bate, Nick Cameron, Val Clure, Al Danforth and Gabor Tari. The topics include:

- \* Cretaceous/Tertiary uplift, mechanisms and prospectivity of the offshore Namibia to Cameroons
- \* The Lower Cretaceous of Gabon and Angola
- \* Palaeozoic Cratonic Basins of North Africa
- \* 3D structural modelling offshore Cote d'Ivoire
- \* Deepwater prospectivity of NW Africa
- \* Mesozoic Plate Tectonics of Rift Basins of North Central Africa
- \* Cretaceous Basins of North-Central Africa
- \* Exploration opportunities in Nigeria
- \* Gravity and magnetic modelling of offshore East Africa
- \* The offshore Natal (SA) Basins
- \* Basin modelling and prospectivity of East Africa

Each presentation will be 25 minutes duration followed by questions. There will also be an extensive poster display. If you would like to present a paper or poster please contact Ray Bate at [ray@globalexplor.com](mailto:ray@globalexplor.com) or Al Danforth at [al.danforth@worldnet.att.net](mailto:al.danforth@worldnet.att.net). All abstracts should be submitted before the end of April.

The price for this symposium is £250 for members and £300 for non-members. Member rate is available to members of PESGB, SPE, Geological Society, EAGE, Houston Geological Society and the Geophysical Society of Houston. Delegates registering before 31st May can take advantage of the early bird fee of £200 (£250 for non-members). A registration form is included in the April PESGB Newsletter and also can be found on the PESGB web site. The registration includes all refreshments, lunch on both days, entry to the evening wine reception and a comprehensive abstract volume.

There are various sponsorship opportunities available. If you or your company would like to support the most prestigious Africa event of 2002 or would like more details please contact either Ray or Gail ([gail@pesgb.org.uk](mailto:gail@pesgb.org.uk)).

Watch for the latest information at [www.hgs.org](http://www.hgs.org) or the "diary" section of [www.pesgb.org.uk](http://www.pesgb.org.uk).



---

# 6TH ANNUAL SUMMER TECHNOFEST

**Thursday, August 8, 2002**  
**2:00 pm–8:00 p.m.**

**Hilton Westchase 9999 Westheimer**  
*(just inside the West Belt)*



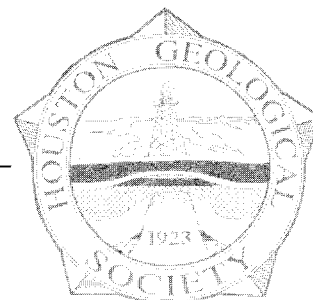
**T**his is a fun and educational way to view the latest technology and research presented by approximately 40 vendors in an exhibit-hall style display. It's also a great place to see old friends and colleagues, socialize, and network. There will be finger foods, a time-limited sponsored bar (first come first served—one ticket each!) and a cash bar. Hope to see you there!!!!

**Cost:** \$5.00 HGS Members, \$10.00 Nonmembers (Nonmembers can sign up for membership and pay your dues at the door and save \$5.00 on the entrance fee!!).

**Email reservation:** E-mail to [reservations@hgs.org](mailto:reservations@hgs.org) to make an e-mail reservation. Please make or cancel reservations by noon, August 7. Include a name and a contact telephone number for every person for whom you are reserving or cancelling a place. HGS members are requested to provide their HGS member number.

**Note:** If you do not receive a reply email confirmation from the HGS office, please call the HGS office at 713-463-9476 to verify your email reservation was received.

**Phone reservation:** Use the HGS Voice Mail System at 713-463-8920.  
Please use Meeting Code (5-0-6).





# VENDOR REGISTRATION FORM

## 6TH ANNUAL SUMMER TECHNOFEST 2002

Thursday, August 8, 2002

2:00 pm–8:00 p.m.

Hilton Westchase, 9999 Westheimer (*just inside the West Belt*)

**Description:** The HGS Emerging Technologies Group is inviting companies to come and share their new technologies and research. We are reserving space at the Westchase Hilton Hotel. The event will be held on August 8 from 2 to 8 p.m. We will have finger foods and a cash bar. People attending this function will be eating and drinking while viewing the latest in technology and research. There will be an admission fee for each person attending. Exhibitors will be given two admissions with the booth fee. Additional admissions may be purchased. An announcement will be run on the HGS website, and if a URL is provided, the vendor list will be directed toward the vendor's website. Please indicate if you are interested in sponsoring the bar and if you are willing to donate a door prize.

**Companies wishing to participate** should fill out the following contract, and return to:

Rosemary Mullin  
4019 Byron, Houston, TX 77005  
(office: 713-522-9922, fax: 713-522-8999)

- 1) The undersigned hereby applies for space at the above-mentioned Technofest.
- 2) This contract must be signed and returned ASAP with check for \$350.00. (If you need more time to have a check cut, please contact Rosemary Mullin.) Make checks payable to HGS (Houston Geological Society).
- 3) Each company will be given use of one table and an electrical outlet. (If you wish to apply for more than one table, please contact Rosemary Mullin before mailing in contract.)
- 4) Setup will begin at 9:00 am by groups on the day of the event, and must be completed by noon.  
Dismantling will begin at 8:00 p.m. and must be finished by 9:30 p.m.
- 5) You will be contacted with more information at least 2 weeks prior to the event.

**\*PLEASE INCLUDE THE CONTACT NAME FOR THIS EVENT!**

COMPANY NAME \_\_\_\_\_

\*CONTACT NAME \_\_\_\_\_ TITLE \_\_\_\_\_

ADDRESS \_\_\_\_\_

CITY \_\_\_\_\_ STATE \_\_\_\_\_ ZIP \_\_\_\_\_

PHONE \_\_\_\_\_ FAX \_\_\_\_\_

EMAIL \_\_\_\_\_

URL SITE \_\_\_\_\_

Bar Sponsorship (Y/N) \_\_\_\_\_ Door Prize (Y/N) \_\_\_\_\_

\*LET ME KNOW IF YOU DO NOT CHECK YOUR E-MAIL REGULARLY. I'LL BE SENDING MOST CORRESPONDENCE BY E-MAIL.

SIGNED \_\_\_\_\_

DATE \_\_\_\_\_

- \* If you have any questions, please contact: [em-tech@e-seis.com](mailto:em-tech@e-seis.com)
- Rosemary Mullin at 713-522-9922 or [rpmullin@hotmail.com](mailto:rpmullin@hotmail.com)
- Shawn Porche at 281-343-7500 or [shawnp@expro.net](mailto:shawnp@expro.net).
- Frank Rabbio at [Frank\\_Rabbio@OXY.com](mailto:Frank_Rabbio@OXY.com)





## Preston Exploration L.L.C.

1717 Woodstead Court, Suite 207  
The Woodlands, Texas 77380

Internally funded, privately-held exploration company is seeking high potential (50+ BCF or 5+ MMBO) exploration prospects both onshore and in inland state waters for the following areas: South Louisiana, Texas Gulf Coast, South Texas, and East Texas. Will consider prospects that are ready to drill or at the idea level. Operations are preferred, but, non-operated interest with acceptable operator will be considered.

### CONTACT:

Joe Eubanks or Bo Blue at  
Tel: (281) 367-8697 Fax: (281) 364-4927

## HGS DIRECTORY OF OIL COMPANY NAME CHANGES

The updated 14th edition (March 2002) of the HGS "Directory of Oil Company Name Changes" is now available. This publication is a cross-referenced list of oil and gas exploration and production companies that have merged, sold major assets, been acquired or otherwise changed their names. The purpose of this publication is to assist geoscientists in tracking down logs, paleo, production histories, well files and other data that may be obscured by company name changes. The directory cost is \$10.

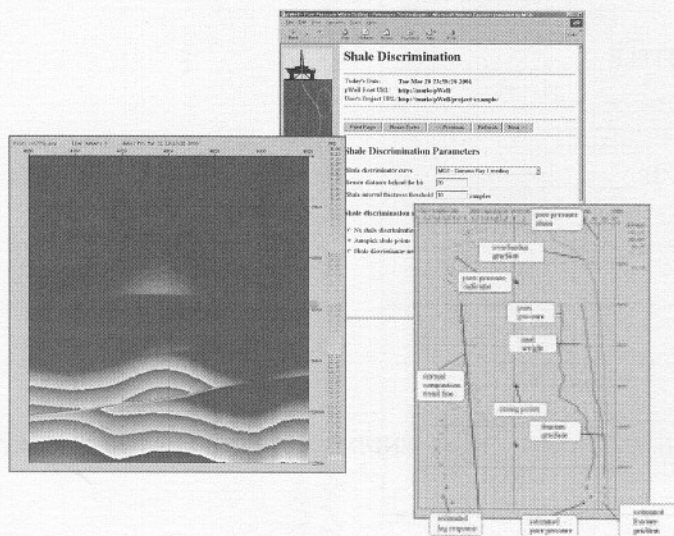
The Name Change Directory can be obtained from the Bureau of Economic Geology in Austin and will also be available at many of the HGS luncheon and dinner meetings.

The Bureau's website is located at:  
[www.beg.utexas.edu/mainweb/pubs01.htm](http://www.beg.utexas.edu/mainweb/pubs01.htm), or you  
can contact Amanda Masterson by phone at  
(888) 839-4365

## Petrospec Technologies, Inc.

Geopressure Analysis Software and Consulting  
Company

This is what our team can do for you:



- Real-Time Pore Pressure Analysis using LWD/MWD data at the rig site while drilling
- Experienced Pore Pressure Engineers on-site for real-time pore pressure predictions and monitoring
- Predictions of abnormal formation pressures using 2D and 3D seismic velocity data
- Large 3D volume processing from high resolution velocity surveys
- Analysis of offset well data and tri-axial variations in velocity fields
- Seismic processing available: Pore Pressure Gradient, Fracture Gradient, Normal Compaction Trend, Overburden Gradient, and Effective Stress

### Petrospec Technologies, Inc.

Tel: 281.364.6000 Fax: 281.363.7914  
Email: [petrospec@petrospec-technologies.com](mailto:petrospec@petrospec-technologies.com)  
[www.petrospec-technologies.com](http://www.petrospec-technologies.com)

**"Leaders in Geopressure  
Estimation Innovation"**



# HGS GOLF TOURNAMENT

**Monday - September 23, 2002**



**Place:** Kingwood Country Club & Deerwood Country Club

**Format:** Four-man scramble

**Featuring:** Closest to the pin  
Bar-B-Q dinner

Refreshment stands  
Trophies, awards and prizes

Longest drive contest  
Betting holes

This year's tournament will be a four-man scramble. A shotgun start at 11:45 a.m. using both golf courses will be followed by an informal buffet dinner with a presentation of awards at the Kingwood Country Club. A player may select his/her own foursome or be placed in a foursome by the tournament committee. The field will be split into flights according to handicap, and the flights will be placed on one of the four courses. Entries will be limited to the first 144 four-man teams entered (576 total golfers), and will be accepted on a first-in basis.

The entry fee will be **\$110 for HGS members** and **\$135 for nonmembers**. Entries will be accepted only if HGS status is filled out correctly; check with the HGS at 713-463-9476 about a member's status as of June 1. Entry fee includes green fees, golf carts, driving range use with practice balls, and a buffet award dinner. So get your group together and come out and enjoy the competition, food, friends, and fun.

Companies or individuals interested in helping should contact Al Filipov at 713-881-8900 or by fax at 713-881-2878. To enter, fill out the entry form at the bottom of this page and mail with your entry fee (payable to HGS Entertainment Fund) to:

**HGS attn: Joan Henshaw**  
10575 Katy Freeway, Suite 290 • Houston, TX 77024

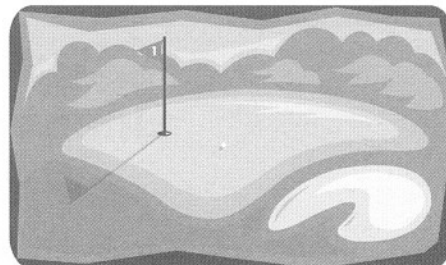
## SCHEDULE OF EVENTS

**9:30 -11:30 a.m.** Registration and free use of driving range

**11:45 a.m.** Shotgun start

**4:45 p.m.** Cash bar, open buffet

**5:30 p.m.** Dinner with awards presentation



All entries will be acknowledged by return phone call the week of September 9.

Name \_\_\_\_\_ Amount Enclosed \_\_\_\_\_

Company \_\_\_\_\_ Phone \_\_\_\_\_

e-mail \_\_\_\_\_

Foursome Members

HGS Member

Company Name

Handicap or

(Please Print)

(yes or no)

Average Score

1. _____	Yes No	_____	_____
2. _____	Yes No	_____	_____
3. _____	Yes No	_____	_____
4. _____	Yes No	_____	_____

Foursome Captain's e-mail \_\_\_\_\_

If you wish, please circle your course preference: Island Lake Marsh Deerwood



**Graphics & Drafting  
Desktop Publishing  
GIS & Geotech Services**



**Outsourcing of  
Corporate Departments**

P.O. Box 941088 - Houston, Texas 77094  
Telephone: 281-560-3010 - Fax: 281-855-6711  
[www.manzanitaalliances.com](http://www.manzanitaalliances.com)

**TOBIN  
Tools for  
Success**



**Tools for Success**

- TOBIN Tools™ Visualization Software
- Land Base and Well Data
- Lease and Ownership Data
- Digital Subscription Windows
- Implementation Services
- Custom Digitizing Services

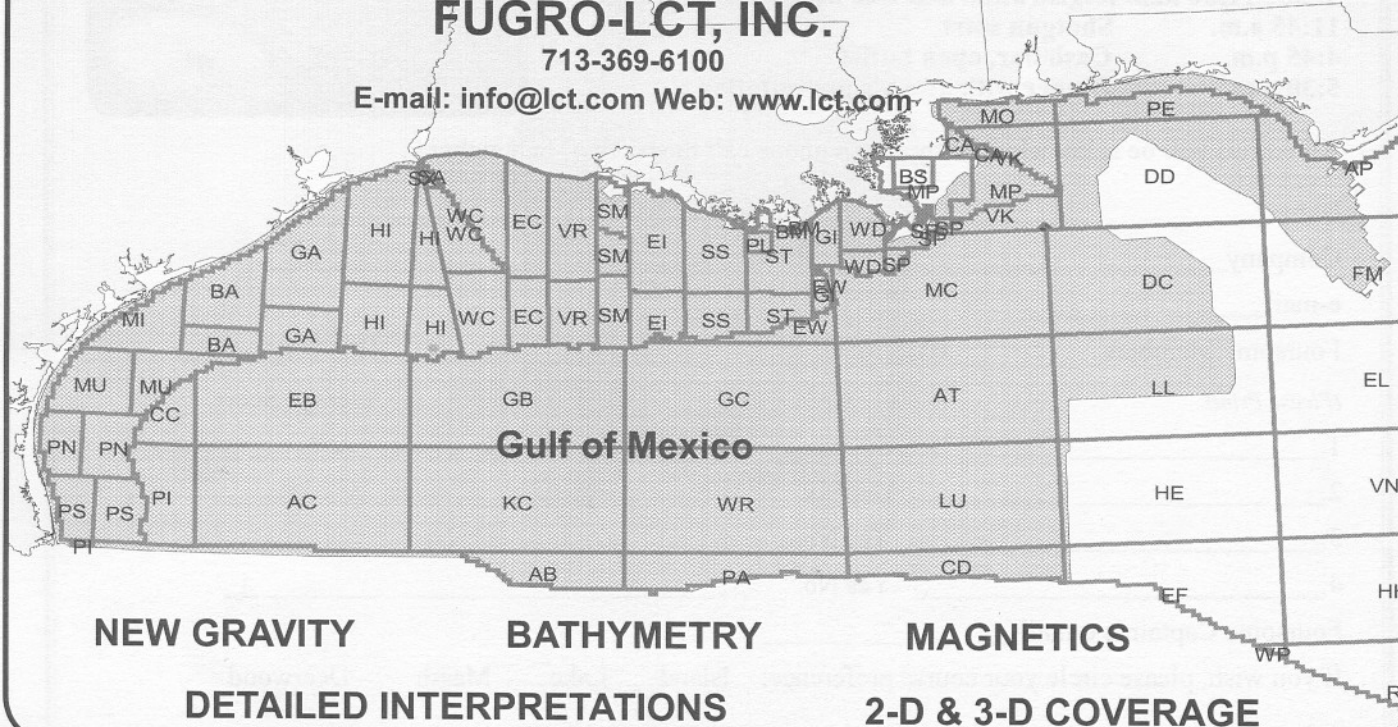
800.365.4484 [www.tobin.com](http://www.tobin.com)

Dallas, TX Denver, CO Houston, TX Moscow, Russia  
New Orleans, LA Newport Beach, CA San Antonio, TX

**Best Quality Data  
Onshore and Offshore  
FUGRO-LCT, INC.**

713-369-6100

E-mail: [info@lct.com](mailto:info@lct.com) Web: [www.lct.com](http://www.lct.com)





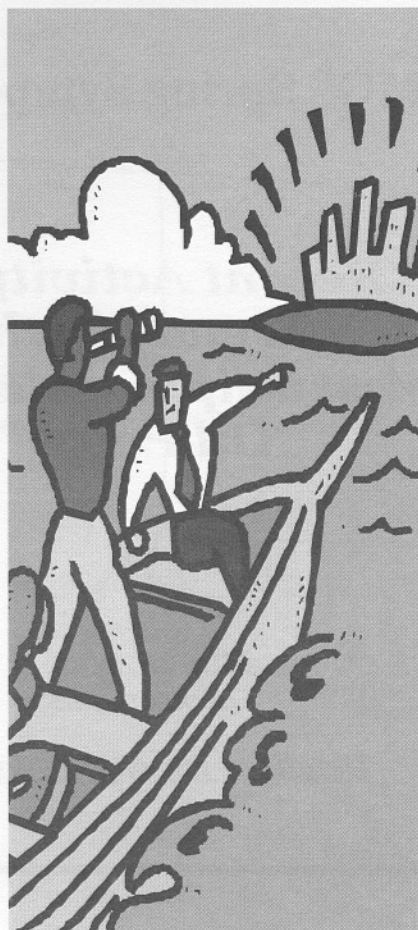
# 2002 Petroleum Leadership and Outlook Conference (PLOC)

The 2nd Annual Petroleum Leadership and Outlook Conference, sponsored by the SPE-GCS, will be held on May 16 at the Omni Houston—Westside (Katy Freeway at Eldridge). A number of experts both inside and outside the petroleum industry will discuss the issues facing our business today. Gary Hamel, a Visiting Professor of Strategic and International Management at the London Business School and nationally known speaker on the role of innovation in the workplace, will be this year's keynote speaker.

The one-day conference will be divided into three forums - Geopolitics and the Security of Supply, Leadership, and the Wall Street Viewpoint - followed by the keynote address. Speakers and sponsors are still being added, so visit [www.ploc.org](http://www.ploc.org) for the most up to date information about session participants.

The issues discussed at highly-successful PLOC 2001 were timely and important for the industry. Audience participation made the conference extremely interesting and effective, with forums where both panelists and audience could highlight the issues and ideas and debate opinions.

Last year's conference attendees thought the PLOC was not to be missed, so mark you calendars now. Register online at [www.ploc.org](http://www.ploc.org) for this year's conference. Early registration is \$195 per person. The price will rise to \$400 after May 10.



## AOA Geophysics Inc.

*Your Contact for Geologically Integrated  
Gravity and Magnetics*

AOA Geophysics Inc. - Houston Division  
11200 Westheimer - 9th Floor  
Houston, Texas 77042, Tel: (713) 532-2624  
INFO@AOAGeophysics.com <http://www.AOAGeophysics.com>





## MGS Spring Symposium

### ***"Recent Activity and Trends in the Mississippi - Alabama Oil Patch"***



May 16, 2002  
Jackson, MS

Details at [www.missgeo.com](http://www.missgeo.com)



**3-D images so real you'll be amazed!**

*The cutting edge...* Volume Pro enabled, real-time interactive 3-D visualization capabilities and the power of Intel® Xeon™ Processors. RCL Systems will configure the latest technology into your Geophysical Workstation to keep you in the pay zone.

Call us at 1-800-758-1771 or 281-240-2777  
or visit us on the web at [www.rcl.com](http://www.rcl.com)

**RCL  
SYSTEMS**

Intel and Intel Inside Logo are registered trademarks of Intel Corporation.



## **MICROSCAN CORPORATION**

*Houston's Leading Authority  
for Document Imaging, Scanning  
and Conversion services.*

Over 30 years of experience in the ELECTRONIC CONVERSION, archival and retrieval of business documents -

*Maps, Seismic Data, Well Logs, Engineering Drawings, Aerial Photos, Medical Records, Financial Data, Manuals, Historical Records, Personnel Files, CAD Files, and more....*

**Color, Black & White or Grayscale Oversize Document Scanning and Reproduction**

16 & 35 MM Microfilm

Microfiche

Aperture Cards

Color / B&W (paper)  
up to 50" wide

Mylars

Sepias

Well Logs

Photographs

MICROSCAN delivers a complete range of services, with a primary focus on quality and customer satisfaction.

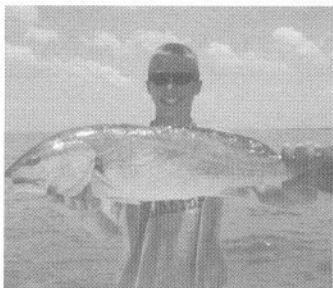
Call Ray Mendez or Johnny Lee at: 713-973-9790

10633 Shadow Wood Dr.

Houston, TX 77043

[mscan@microscan corp.com](mailto:mscan@microscan corp.com)





# 2nd ANNUAL GSH/HGS SALTWATER TOURNAMENT

Saturday, June 22, 2002  
Teakwood Marina, Village of Tiki Island  
Galveston, Texas



This year's Fishing Tournament will be held on Saturday, June 22 at the Teakwood Marina, Village of Tiki Island, Galveston, Texas. We are looking forward to a big event this summer and we encourage full family participation.

Trophies will be awarded for the heaviest individual Redfish (Non-Tagged), Speckled Trout, and Flounder for the Anglers, Junior Anglers, and Lady Anglers. Trophies will also be awarded for the heaviest individual Stringer - 1 Redfish, 3 Speckled Trout, and 1 Flounder.

Registration fee includes: launch fee, GSH/HGS Fishing Cap, BBQ meal at the marina after weigh-in, refreshments, Trophies, and DOOR PRIZES. For more information, please contact:

**Bobby Perez (HGS & GSH)**

281-240-1234 ext. 219 Office • 281-240-4997 Fax • 281-468-1809 Cell • 281-495-8695 Home

E-mail addresses: [rdphtx@aol.com](mailto:rdphtx@aol.com) or [r\\_perez@seismicventures.com](mailto:r_perez@seismicventures.com)

The Geophysical Society of Houston and the Houston Geological Society are non-profit organizations serving the Geophysical Industry. Corporate and individual contributions are appreciated and will be acknowledged on several sponsor boards and banners at the weigh-in station and marina. All contributors will be recognized in their respective organization newsletters following the tournament. This is a great way to entertain friends, family, business associates, and clients. So spread the word!

## GSH/HGS SALTWATER TOURNAMENT

NAME: \_\_\_\_\_ COMPANY: \_\_\_\_\_

ADDRESS: \_\_\_\_\_

PHONES: (H) \_\_\_\_\_ (B) \_\_\_\_\_ (C) \_\_\_\_\_

E-MAIL ADDRESS: \_\_\_\_\_

Upon receipt of the Registration form, each participant will be provided with a copy of the specific tournament itinerary and rules sheet by e-mail. Please register **EARLY**

Please return this form with your check for \$60.00 per contestant payable to:

**GSH/HGS SALTWATER TOURNAMENT and Mail to:**

**Ms. Joan Henshaw, 10575 Katy Freeway, Suite 290 • Houston, TX 77024**

**Phone: (713) 463-9477 • Fax: (713) 463-9160**

Registration Fee: \$ \_\_\_\_\_ + Sponsor Contribution: \$ \_\_\_\_\_ = TOTAL \$ \_\_\_\_\_

### DISCLAIMER:

I acknowledge that neither the Geophysical Society of Houston nor the Houston Geological Society will be held responsible for injury or accidents during this event. **PRACTICE SAFETY!!!!**

Signature: \_\_\_\_\_



# LLOG

EXPLORATION COMPANY

## LLOG EXPLORATION COMPANY

Acquiring well defined drilling prospects and producing properties with development potential.

Will consider both open acreage ideas and assembled prospects with reasonable promote.

South Louisiana onshore and state waters.

Operations required. Minimum participation 50-75%.

**CONTACT Scott Gutterman**  
**(504) 833-7700**  
 433 Metairie Road, Suite 600  
 Metairie, LA 70005



## BULLDOG EXPLORATION COMPANY

Seeking good onshore drilling prospects in Texas and Louisiana Gulf Coast, open acreage or promoted packages.

Seeking 3D exploration venture partners in above areas.

**Contact Doug Cowan**  
**281-895-8929**

## Interpretation<sup>3</sup>

### Quality Interpretations for Quality Prospects

**Alex MacKeon**

**Dan Shaughnessy**

Specializing in 3-D Seismic Interpretations  
 Integrated Field Studies  
 Sequence Stratigraphy  
 Domestic and International  
 Landmark Workstations

Visit Our Website: <http://www.interp3.com>

11767 Katy Freeway, Suite 300  
 Houston, Texas USA 77079  
 Telephone: (281) 293-7770  
 Fax: (281) 293-0556  
 E-mail: [drs@interp3.com](mailto:drs@interp3.com)



## PETROPHYSICAL SOLUTIONS, INC.

*The fulltime solution source*

- International & Domestic Consulting
- Workflows
- Field Studies
- Single Well Studies
- Training & Mentoring Programs
- Software Training & Development
- Soviet & Electric Logs

*Focusing on your needs*



PETROPHYSICAL SOLUTIONS, INC.  
 11767 Katy Freeway, Suite 380  
 Houston, TX 77079 USA  
 Phone: (281) 558.6066  
 Fax: (281) 558.5783  
 email: [petrosol@aol.com](mailto:petrosol@aol.com)

## PCI

## Paleo Control, Inc.

Drilling Wells - Data Bases - Proprietary Paleo

**Lloyd Tuttle Jim Thorpe**

**Bob Liska Bob Drake**

Houston, Texas  
 713-849-0044

[ltuttle@hal-pc.org](mailto:ltuttle@hal-pc.org)





# Remembrances

Since the last communication (February 1) from the HGS Remembrances Committee, our geological community has lost the following members:

**Howard L. Garrett** passed away January 17, 2002. He attended the Colorado School of Mines, receiving a geological engineering degree in 1949 and a masters in geology in 1950. He retired from a distinguished career with Shell Oil (Pecten) and was an Emeritus Member of the HGS. A donation in the memory of Mr. Garrett will be made to the HGS Undergraduate Scholarship Fund.

**Evelyn Mary Etter**, 53, of Houston, passed away Monday, March 4, 2002 after a lengthy illness. Evelyn was born in Philadelphia on June 13, 1948 and attended Rutgers University at Camden, New Jersey, where she earned a Bachelor of Science degree in geology. In 1976, she received her Master of Science degree in geology from the University of Kentucky. After moving to Houston, she worked many years in the petroleum industry and was a long-standing member of the Houston Geological Society. Evelyn was active with many conservation and nature-preservation organizations. A memorial donation will be made to Rutgers University.

**William C. Robbins**

Sr. Exploration Advisor, TOTALFINA ELF

bill.robbins@totalfinaelf.com or (713) 647-3506 □

## PLEASE NOTE

The *Bulletin* apologizes for an inadvertent error in the March issue, pg. 41. A donation made "in honor of" the **very much alive Dr. C. O. Durham** was accidentally labeled "in memory of". The *Bulletin* and the W. L. Calvert Fund apologizes for the error and any concerns it may have caused Dr. Durham's friends and colleagues.

*The Editor*

## 2002 Southwest Section Convention AMERICAN ASSOCIATION OF PETROLEUM GEOLOGISTS



June 6-8, 2002  
Ruidoso, New Mexico

## Solutions of the Southwest

Cost of \$110 includes: registration, two luncheons,  
transactions publications

Contact Jan Wilson at 505-622-2700, or e-mail [jan@zianet.com](mailto:jan@zianet.com)  
for registration information

## AEROMAGNETIC DATA

*an integral component  
of a thorough exploration program*

### NON-EXCLUSIVE AEROMAGNETIC DATA AND INTERPRETATION

High resolution aeromagnetic data coverage throughout the Gulf of Mexico. For more information, visit [www.fugroairborne.com](http://www.fugroairborne.com) or contact us.

Houston- Jeff Rowe  
T: +1 713 369 6123  
[jrowe@fugro.com](mailto:jrowe@fugro.com)

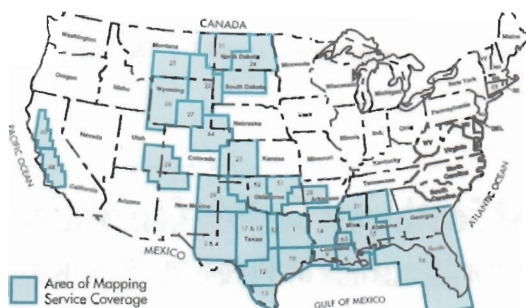
Calgary- Jim Genereux  
T: +1 403 777 9280  
[jgenereux@fugroairborne.com](mailto:jgenereux@fugroairborne.com)

Ottawa- Ken Keeler  
T: +1 613 731 9575  
[kkeeler@fugroairborne.com](mailto:kkeeler@fugroairborne.com)



FUGRO AIRBORNE SURVEYS FLYING IN THE GULF OF MEXICO





**Geological Mapping Services  
Structure Maps on CD-ROM  
Base Maps  
Geological Data Centers  
Executive Reference Maps  
Formation Tops Data File**

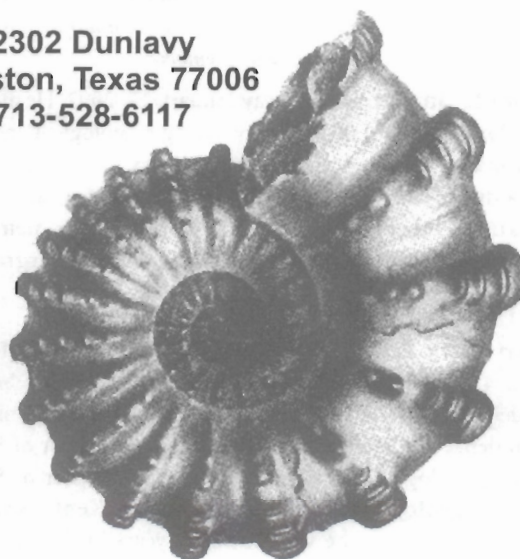
For more information call Geomap Company at  
(713) 520-8989 or E-Mail at [sales@geomap.com](mailto:sales@geomap.com).

**paleoarts**

[www.paleoarts.com](http://www.paleoarts.com)

*m.useum quality fossils*

**2302 Dunlavy  
Houston, Texas 77006  
713-528-6117**



*specimens, corporate gifts, decor  
for  
office, home, collections*

**Gallery Hours: 11-5 Thur - Sun  
April and May by Appointment Only**



**BTA OIL PRODUCERS**

- ◆ **ACQUIRING:** Drilling prospects in the Texas and Louisiana Gulf Coast onshore and state waters.
- ◆ **PREFERRED:** Operations, 3D support, Minimum 25% participation
- ◆ **CONTACT:** Paul Barber, ph: 281-872-5022, e-mail: [pbarber@btaoil.com](mailto:pbarber@btaoil.com)  
16825 Northchase, Suite 680, Houston, TX 77060



**Geological Data Library, Inc.**

**Houston's TECHNOLOGY Data Library**  
Workstation Rentals for Members/Guests  
SMT, Geographix, Neuralog Applications  
Logs, Maps, Production Data, Research  
Internet Access, Many Other Services

713 658-0033  
811 Dallas, Suite 930  
[www.GeologicalData.com](http://www.GeologicalData.com)



**Right Time,  
Right Place,  
Right People!**



**The Time to  
Plan is  
Right Now!**

For more information contact:  
**Michelle Mayfield Gentzen**  
Fax: 918-560-2684  
E-mail: [mmayfiel@aapg.org](mailto:mmayfiel@aapg.org)  
Web site: [www.aapg.org](http://www.aapg.org)





**Ellington &  
Associates, Inc.**

[www.ellingtongeologic.com](http://www.ellingtongeologic.com)

*Geological, GeoChemical & Petroleum Engineering Services*

- ◆ Paleo Preparation
- ◆ Sample Archiving
- ◆ Mud Logging Quality Control
- ◆ Headspace & Cutting Gas Analysis ( $C_1 - C_6$ )
- ◆ Total Organic Carbon
- ◆ Custom Well Log Plotting using WinLog<sup>®</sup>
- ◆ Log Digitization & Presentation
- ◆ Lithological Descriptions
- ◆ Petrographic Thin Sections
- ◆ Fluid Inclusion Microscopy

1022 Wirt Rd., Suite 312 ◆ Houston, TX 77055

Ph: (713) 956-2838 FX: (713) 956-2840 ◆ [info@ellingtongeologic.com](mailto:info@ellingtongeologic.com)

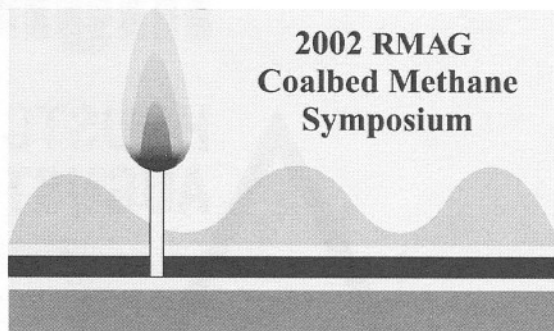
-----  
*Technology, Service and Experience Rolled Into One!*

**June 19, 2002**

## **Third RMAG Coalbed Methane Symposium**

The Denver Marriott City Center  
Lunch Included, Social Hour Afterward

**Visit: [www.rmag.org](http://www.rmag.org) or call 303.573.8621**



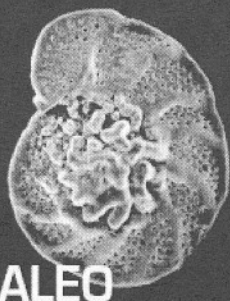
The Symposium will provide an opportunity to meet your colleagues, learn about new and potential plays; developed and emerging drilling, completion and production practices. There will also be reviews of what contributed to the success of productive basins such as the Powder River, San Juan, Uinta and Raton basins.

## **ATTENTION PROSPECT GENERATORS:**

**Identify By-passed Low Resistivity/Low Contrast Pays in Cased Holes  
with Synthetic MRI Technology Without Running Any New Logs**

During the last 3 years reprocessing the original suite of logs run on various wells using Synthetic MRI Technology has identified millions of dollars of reserves associated with low resistivity and/or low contrast zones. You can now have this done on your prospect's key well(s) FREE of any up front cost to you. Why not put this new technology to work for you by letting it support and assist in selling your prospect? To see examples, learn more about the technology and how you can take advantage of this opportunity,

**Contact: Fred Haston, Cane River Resources, Inc. 281-389-7507 or [fhaston@txucom.net](mailto:fhaston@txucom.net)**



## *PALEO-DATA, INC.*

6619 Fleur de Lis Drive New Orleans, LA 70124-1499  
(504) 488-3711 phone (504) 488-6292 fax [paleostaff@paleodata.com](mailto:paleostaff@paleodata.com)

[www.paleodata.com](http://www.paleodata.com)

Arthur S. Waterman  
Michael W. Center  
Norman S. Vallette

Albert F. Porter, Jr  
William H. McKee  
Joshua D. Miller

*BIOSTRATIGRAPHIC EXAMINATIONS  
REGIONAL DATA SETS DEPOSYSYSTEM MAPS*



## HGA'S Closing Time and The Last Hurrah!

### ANNUAL MEETING

*From Your President - Millie Tonn*

Our year has been terrific one, yet it is rapidly drawing to a close. But before we bid it farewell, we will have one last bash. Our Annual Meeting scheduled for May 7, 2002, at 11:00 a.m., will include an informal style show and luncheon at the Racquet Club. There will be models from the HGA and musical entertainment by one of our own members—Laima Gaizutis. Chairing this event will be Sara Nan Grubb, with the able assistance of Margaret Jones and members of their committee. Also included is the business meeting when new officers for the upcoming year are announced and introduced.

One more time—Membership! We need to expand our membership. Let's all work on bringing this about in the coming year.

What has helped make our year go so well has been the talents, hard work, and contributions of our Officers, Board members and members of our various committees. Special thanks go out to the following:

- \* Ann McFarlan, our First Vice President, for planning our parties
- \* Anne Rogers, for an excellent job serving as our Secretary, along with serving as Party Chairman for The Great Caruso
- \* Margery Ambrose, for her effort in collecting our dues on time and trying to increase our membership
- \* Jackie Smith, for a fine job being our Chief Financial Officer
- \* Winona LaBrant Smith, for her time spent putting together our year book
- \* Gwinn Lewis, for a super job as Editor of the Eclectic Log
- \* Kathryn Bennett, for providing a wonderful service sending out cards and notes to our members who were ill or had experienced the loss of a love one, as well as designing neat name tags for our parties
- \* Susan McKinley, our media specialist, who earned special kudos for covering our news in the HGS *Bulletin*
- \* Janet Steinmetz, for a great job chairing the Jazz Brunch last September
- \* Daisy Wood's, for her flair for party planning, making GAME DAY a very enjoyable event

- \* Helen Thomas, our Historian/Photographer, for working diligently recording us for posterity
- \* Lois Matuszak, for a first class job serving as our Parliamentarian; and last but not least,
- \* Linnie Edwards, who gets an extra big Thank You for mailing the Log.

And special thanks go to all the others who were not listed, but helped with our activities.

I should like to conclude on a personal note: with the ending of my tenure as HGA President for 2001–2002, I want to express my deepest appreciation for having been given the opportunity to hold this position. I thoroughly enjoyed the year and it was one of my best times. I am truly thankful to all of you—the members, fellow officers and board members for the support and cooperation I was given. It made my job a memorable and wonderfully enriching experience. And although time marches on, friendships and memories are lasting and enduring.

My successor as President, Jan Stevenson. I am sure she will do a fantastic job for you and I know you, will lend her your support as you did for me.

My sincerest thanks again for making my year so pleasant and memorable

### GeoWives

Thanks to all the GeoWives officers and volunteers for a wonderful year. Our theme was "Expanding Horizons" and I can say with confidence that we succeeded. Plan to attend our final event of the year, a business meeting, followed by a luncheon at the Junior League at 11:00 a.m. on Thursday, May 16. Please join us in May, or any time in the next program year. You are always welcome.

*Alice Cook, GeoWives President* □



# Core Competency

The fundamental discipline at which a business excels. An emphasis on a single specialty with the goal of perfecting its practice. Antonym: Diversification.

—●— Brine —●— 10% Acetic



832-237-4000 • [www.omnilabs.com](http://www.omnilabs.com)



8 Locations in the United States and South America • Headquarters: Houston, TX



# AVO Attribute Volumes. Well Logs.

## Refloat your sunk costs through integration.

TUNE YOUR 3D VOLUMES TO GEOLOGY USING ADVANCED NEURAL NETWORKS. GIVE US ALL YOUR 3D VOLUMES, LOGS AND MAIN ZONE OF INTEREST, AND WE'LL RETURN A BRAND NEW 3D VOLUME TUNED TO THE CHALLENGE AT HAND. QUICKLY.

SQUEEZE AVO INFORMATION OUT OF YOUR EXISTING DATA THROUGH ADVANCED WAVESHAPE ATTRIBUTE ANALYSIS. GIVE US YOUR 3D VOLUMES, LOGS AND TIME HORIZONS, AND WE'LL RETURN A SERIES OF RESERVOIR PROPERTY MAPS THAT USE ALL YOUR AVO ATTRIBUTE DATA.

*We'll mine your data for hidden value.*

Now in our 6<sup>th</sup> year of operations  
[www.TEOC.com](http://www.TEOC.com)



## Professional Directory



**Life, Health, Dental, Disability, and Supplemental Plans**  
 AAPG's GeoCare Benefits Insurance Program  
 P. O. Box 1246  
 Carpinteria, CA 93014-1246  
**800-337-3140**  
 E-mail: [geocarebenefits@agia.com](mailto:geocarebenefits@agia.com)  
[www.geocarebenefits.com](http://www.geocarebenefits.com)



Houston  
 Geological Society  
 HGS Bulletin

**Annette Mather**  
 Advertising Coordinator

10575 Katy Freeway, Suite 290 Office: 713-463-9476  
 Houston, Texas 77024 Home: 281-556-9539  
[www.hgs.org](http://www.hgs.org) Office Fax: 713-463-9160



Society of Independent  
 Professional Earth Scientists

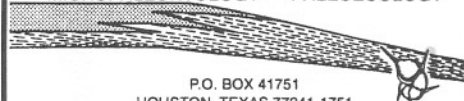
### SIPES

- Independents mainly in the Oil & Gas Profession
- Network with Prospect and Production Buyers and Sellers
- Deal with Duly Certified Professionals

For More Information Contact SIPES @  
 (713) 651-1639 or e-mail: [sipes@sipes.org](mailto:sipes@sipes.org)

**PCI PALEO CONTROL, INC.**

MICROPALEONTOLOGY PALEOECOLOGY



P.O. BOX 41751  
 HOUSTON, TEXAS 77241-1751  
 OFFICE 713-849-0044 RESIDENCE 713-466-7922

**RASHEL N. ROSEN**



**CONSULTING BIOSTRATIGRAPHY**

Domestic and International  
 Foraminifera and Calpionelids interpreted  
 for Sequence Stratigraphy

(281) 893-6646 Fax: (281) 586-0833  
 email: [rosen@neosoft.com](mailto:rosen@neosoft.com)

PROSPECT GENERATION/EVALUATIONS  
 DEVELOPMENT/ACQUISITION STUDIES

**ROGER S. TREJO**  
 Certified Professional Geological Scientist  
 Certified Petroleum Geologist



3222 Lakeland Blvd. Phone: (281) 265-5973  
 Sugarland, Texas 77479

SAM & ANN KOSTER

**COLUMBIA TRADING COMPANY**  
 Mineral and Fossil specimens  
 collections, décor, and gifts

P.O. Box 820211 phone: 281-493-9656  
 Houston, Texas 77281 e-mail: [skoster@aol.com](mailto:skoster@aol.com)

**Petrophysical Solutions, Inc.**

**Val J. Lincecum**  
 Sr. Petrophysical Specialist



11767 Katy Frwy  
 Suite 380  
 Houston, TX 77079  
 281 558 6066  
 fax 281 558 5783  
[valj@msn.com](mailto:valj@msn.com)

**"POWERPOINT"**  
 Digital Productions  
*We create your presentation!*  
**Carol Dickinson**  
 (281) 858-6439



## Winship Geological Consultants

CONSULTING PETROLEUM GEOLOGISTS

**Steve H. Hill**  
PETROLEUM GEOLOGIST  
OWNER

Two Allen Center  
1200 Smith Street  
Suite 1140  
Houston, Texas 77002  
Office: (713) 659-7301  
Home: (713) 467-4166  
Pager: (713) 735-0825  
Fax: (713) 654-9136  
WinGeoCon@aol.com



**Graphics Drafting Geotech GIS**  
281.560.3010 - www.manzanitaalliances.com

(504) 831-8874 (O)  
(504) 831-8827 (Fax)

(504) 454-1472 (H)

## JURASIN OIL & GAS

2424 EDENBORN AVENUE, SUITE 660  
METAIRIE, LA 70001

JOHN M. JURASIN  
President

Cert. Pet. Geologist #4284  
Cert. Prof. Earth Scientist #1961

### Geological Consultants Latin America

Basin Analysis, Sediment Provenance,  
Stratigraphy, Petroleum Systems,  
Regional Tectonics

Houston, Texas  
Phone: (281) 856-7502  
Fax: (253) 595-5425  
Email: claudio\_bartolini@hotmail.com  
Technical Advice  
Bilingual Training  
English/Spanish



### GeoCenter, Inc.

16800 Greenspoint Park Drive • Suite 100S  
Houston, Texas 77060-2300

William E. Zepeda  
Dave Spaulding  
Sales  
Seismic Data Processing  
SeisUP® Systems

Telephone (281) 443-8150 Fax (281) 443-8010  
sales@GeoCenter.com

### NORTEX CORPORATION OIL & GAS PRODUCTION & EXPLORATION

**Robert W. Kent**  
Vice President  
Land & Acquisitions

1415 Louisiana Suite 3100 Houston, Texas 77002  
713-658-1142 Fax: 713-658-0739

### EXTERRA GeoScience Ltd.

Dipmeter and Borehole Imaging Specialists

**Eric F. Paaue**

One Cornerstone Plaza  
3845 FM 1960 W Suite 305  
Houston, TX 77068  
Ph. 832-484-9200  
Fax. 832-484-9201  
eric@exterraltl.com

**Place Your  
Business Card Here!  
\$125.00 for 10 issues**

### Nomad Geosciences

11429 Purple Beech Drive  
Reston, VA 20191-1325



**Al Taylor - President**

Prospect Generation, Exploration and Development, Acreage  
Evaluation, Reservoir Characterization and Consulting

Phone/Fax: 703-390-1147 E-mail: NomadGeo@aol.com  
Residence: 703-390-1146 E-mail: CATaylorJr@aol.com

### ROGER MORTON GEOPHYSICAL CONSULTANT

SEISMIC INTERPRETATION  
DOMESTIC-FOREIGN - 2D/3D

14527 SANDY CREEK DR. PHONE: 281-370-3770  
FAX: 281-370-4369 E-MAIL: KVCRCM@AOL.COM

WWW.ROGERMORTON.COM

### JEFFREY J. DRAVIS, Ph. D.

Applied Carbonate Geology  
Regional Play Evaluation

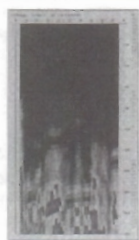
Core Studies • Reservoir Zonation  
Depositional Models • Porosity Evolution  
In-House and Field Carbonate Seminars  
WEBSITE: www.dravisinterests.com  
(713) 667-9844

**Walter H. Pierce, Ph.D.**  
**WHPierce Exploration**  
Geology of Arabian Plate and Hydrocarbon Systems  
Regional Mapping and Stratigraphy  
Prospect Context and Post Appraisal  
Seminars, Reports, Consulting  
Website: whpierceexploration.com  
(281) 3763414

**Earth View  
Associates, Inc.**  
12000 Westheimer, Suite 320  
Houston, Texas 77077 U.S.A.

Support for Pathfinders  
Geology - Geophysics - Biostratigraphy

Sam LeRoy - V.P. Geosciences  
Phone: (281) 556 - 9766 Fax: (281) 556 - 9778  
email: earthview@aol.com  
http://members.aol.com/earthview/EV1.html



### Geopressure Analysis From Seismic

Innovative well-site/desktop software and  
consulting services designed to help you drill  
safer, faster, and with less risk.

Petrospec Technologies, Inc.  
Mark Merklinger  
Pore Pressure Specialist/Consultant  
Tel: 281.384.8000 Fax: 281.383.7814  
Email: market@petrospec-technologies.com  
www.petrospec-technologies.com

### PCI BOB LISKA PALEO CONTROL, INC.

WILCOX- WELLS STUDIES DATABASE  
MICROPALEONTOLOGY PALEOECOLOGY

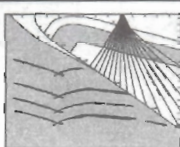
7706 GREEN LAWN DR.  
HOUSTON, TEXAS 77088-5406  
OFIC. 281-847-0922 RES. 281-847-3339  
E-MAIL: rlliska@hal-pc.org

### Petrophysical Solutions, Inc.

**William G. Price**  
Sr. Petrophysical Specialist

11767 Katy Frwy  
Suite 380  
Houston, TX 77079  
281 558 6066  
fax 281 558 5783

wgp@psi-petro.com



### T/X RESOURCES

"Combining Technology with Petroleum Exploration"

**W. MICHAEL CLINE**  
Internet-Based Seismic Interpretation

Voice: (713) 665-5449  
Fax: (713) 665-7343  
E-mail: mkec@txresources.com  
Website: www.txresources.com

SMT Seismic Workstations  
Exploration & Development  
Domestic or International  
Technology apps. since 1985

### PalCon DataBase

PALEONTOLOGIC CONTROL

BY  
**JOHN PICKERING**  
AAPG CPG #2234  
FRIIO-VICKSBURG-JACKSON TOPS  
(& CONTROL WELL DATA)

**VICKY PICKERING, Mgr.**  
(281) 498-5249  
E-mail: johnpick@flash.net



11203 SHARPVIEW DR.  
HOUSTON TX 77072-2907  
www.pickrecords.com/palcon.html

### MICRO-STRAT INC.

Seismic Sequence Stratigraphic Analysis  
High Resolution Biostratigraphy  
Prospect and Block Evaluation  
International Training Center  
Geochemistry



Brazil • Egypt • Nigeria • Peru • Venezuela

**Walter W. Wornard, Ph.D.**  
President

5755 Benhonne, Suite 406  
Houston, TX 77036-2013  
E-mail: msw3@Micro-Strat.com  
Web-Site: www.Micro-Strat.com  
Off: 713/977-2120  
Res: 713/795-5190  
Fax: 713/977-7684  
International - Domestic

### Seismotech

Geophysical/Petrophysical Exploration Services  
Specializing in seismic modelling,  
imaging, processing, and acquisition  
**Joseph M. Mills, Jr., Ph. D.**

2107 Olympic Drive  
League City, Texas 77573-4451  
email: josephmills@ghg.net phone/fax: (281) 334-7905



**Royce Landman**

4411 Bluebonnet • Suite 108  
Stafford, Texas 77477  
(281) 240-2777 • FAX (281) 240-0043  
Toll Free: (800) 758-1771  
Email: rcl@rcl.com • http://www.rcl.com

Geophysical Workstations • Hardware • Software  
LAN'S • Systems Analysis • Custom Programming



<p>P.O. Box 81 • 1390 MAIN STREET MONTARA CA 94037-0081</p> <p>Ph: 650.728.3373 Fax: (BY REQUEST)</p> <p><b>VICTOR H. ABADIE III</b> CONSULTING GEOLOGIST</p> <p>CERTIFIED PETROLEUM GEOLOGIST, AAPG NO.3936 CALIFORNIA REGISTERED GEOLOGIST, LIC.NO.4040 SOC. OF INDEPENDENT PROF. EARTH SCI., NO.2085</p>	<p><b>The WorkStation Place</b> ... affordable interpretation workstation services</p> <p><b>Stephen G. Starr</b> ...</p> <p>16360 Park Ten Place, Suite 102 • Houston, Texas 77084 281 492-1856 ... Voice • 281 398-6669 ... Fax sstarr9711@aol.com</p>	<p><b>PROSPECTRA ENERGY INC.</b> Worldwide Prospect Generation <b>ROBERT H. BARTON</b> President/CEO</p> <p>11111 Wilcrest Green Ste. 211 (713) 974-6061 Houston, TX 77042 Fax (713) 974-6461</p>
<p><b>BSE</b> B &amp; S Exploration, Inc.</p> <p><b>JAMES B. BENNETT</b> <b>RANDALL SCHOTT</b> Geology Geophysics</p> <p>811 Dallas Suite 1020 Houston, Texas 77002 Bus. (713)650-1378</p>	<p> <b>SUNRISE ARTS</b> Nelson B. Yoder &amp; Jeanne Broussard (281) 471-7951 sunrisearts.com</p> <ul style="list-style-type: none"> <li>• Glass Art</li> <li>• Stone Designs</li> <li>• Paintings</li> <li>• Prints</li> <li>• Framing</li> <li>• Beveled Glass Doors</li> </ul>	<p> <b>Nelson B. Yoder</b> (President) (281) 471-8406 Fax (281) 471-7951</p> <p><b>"Specializing in Carbonate Petrography"</b></p> <p><b>INTEGRATED EXPLORATION SERVICES, INC.</b> P.O. Box 1546 3903 Old Hwy. 146 La Porte, Texas 77572</p>
<p> <b>National Petrographic Service, Inc.</b> THIN &amp; POLISHED SECTIONS PALEO FORAMS NANNOFOS PALYNOLOGY VITRINITE</p> <p><b>LINDA S. FEUX</b> PRESIDENT</p> <p>5933 Bellaire Blvd. Suite 108 Houston, Texas 77081 www.nationalpetrographic.com (713) 661-1884 Fax: (713) 661-0625 email: npsinc@ash.net</p>	<p><b>CLASSEN EXPLORATION, INC.</b>  <b>JAMES S. CLASSEN</b></p> <p>P.O. BOX 3489 BOISE, ID 83703 classenjc@msn.com BUS. 208-854-1037 RES. 208-854-1038 FAX. 208-854-1029</p>	<p> <b>SHANNON EXPLORATION</b> Remote Sensor Interpretation. Processing, and CAD</p> <p><b>Patrick J. Shannon</b></p> <p>3030 South Gessner, Suite 262 Houston, Texas 77063 Tel. (713) 785-2599 Email: shannonexplor@msn.com</p>
<p> <b>Collarini Engineering Inc.</b> Petroleum Engineers &amp; Geoscientists</p> <p><b>Cheryl R. Collarini, P.E.</b> President</p> <p>909 Poydras St., Suite 1450 New Orleans, Louisiana 70112 Office: 504.522.9077 Fax: 504.522.9097 crc@collarini.com 2500 Tanglewilde, Suite 490 Houston, Texas 77063 Office: 832.251.0160 Fax: 832.251.0157</p>	<p> <b>Houston Geological Society</b> HGS Bulletin</p> <p><b>Annette Mather</b> Advertising Coordinator</p> <p>10575 Katy Freeway, Suite 290 Houston, Texas 77024 www.hgs.org Office: 713-463-9476 Home: 281-556-9539 Office Fax: 713-463-9180</p>	<p><b>Daniel C. Huston</b> <b>Holly Hunter Huston</b></p> <p> <b>HUNTER 3-D</b> 3-D seismic / gravity interpretation, and AVO analysis.</p> <p>9898 Bissonnet suite 362 • Houston, TX 77038 (713) 981-4650 • (281) 242-0639 E-mail: hunter3d@wt.net Website: www.hunter3dinc.com</p>
<p><b>BER-EX-CO., INC.</b> <b>Orville Roger Berg, Ph.D.</b> Exploration, Exploitation Seismic Evaluation Domestic, International</p> <p>400 Travis St., Suite 616 Shreveport, LA 71101-3108 (318) 220-0300 orberg@bellsouth.net 9949 Beaver Creek Drive Shreveport, LA 71106 (318) 798-1748</p>	<p> <b>Jim (M. Ayad) Zaki</b> President</p> <p><b>Geotech &amp; Design Services</b> Data digitizing, drafting &amp; computer graphic</p> <p>16360 Park Ten Place Dr. # 102 Houston, TX 77084 gdsjz@aol.com Tel. : (281) 492-0530 Fax : (281) 492-6606 Cell : (281) 935-4830</p>	<p><b>Real-Time Pore Pressure Prediction</b></p> <p> <b>Petrospec Technologies, Inc.</b> Mark Hershman Pore Pressure Specialist/Consultant</p> <p>Tel: 281.364.6000 Fax: 281.363.7914 Email: mark@petrospec-technologies.com www.petrospec-technologies.com</p>
<p> <b>SVITZER</b> MARINE SURVEYS WORLDWIDE</p> <p><b>ALAN FOLEY</b> SALES</p> <p>SVITZER SURVEYS 3311 RICHMOND AVENUE, SUITE 227 HOUSTON, TEXAS 77098 (713) 526-6832</p>	<p> <b>BRUCE W. BLAKE, CPL/ESA</b> ENVIRONMENTAL SERVICES • AUDIT SERVICES LAND SERVICES • PETROLEUM PROPERTY MANAGEMENT</p> <p>HOUSTON AREA PERMIAN BASIN P.O. Box 4082 • LIBERTY TX 77575 400 N. MAIN • MIDLAND TX 79701 (936) 384-2841 • (800) 453-4275 (915) 683-4275 • bruceblake@tucan.net</p>	<p> <b>el paso</b>   Production</p> <p><b>Kevin McMichael</b> Senior Vice President Exploration</p> <p><b>Steve Murray</b> <b>Jack Falls</b> Vice President Vice President Offshore Exploration Onshore Exploration</p> <p>9 Greenway Plaza • Houston, Texas 77046 Off: (832) 676-2600 • Fax: (832) 676-1359</p>
<p> <b>GRANT</b> GEOLOGICAL</p> <p><b>D. Hugh Fraser, Jr.</b> Marketing &amp; Sales</p> <p>Tel: (281) 398-9503 • Fax: (281) 398-9996 16850 Park Row, Houston, Texas 77084 P.O. Box 219950, Houston, Texas 77218-9950 Direct Phone: (281) 848-6806 • Home Phone: (713) 660-0926 Email: hugh.fraser@grantgeo.com • www.grantgeo.com</p>	<p><b>TIDEWATER ENVIRONMENTAL</b></p> <p><b>ARLIN C. HOWLES</b>, REM., GSA, CAPM NATIONAL REGISTRY OF ENVIRONMENTAL PROFESSIONALS</p> <ul style="list-style-type: none"> <li>• Phase I and II Due Diligence</li> <li>• Phase II and III Corrective Action/Remediation</li> <li>• Wetlands Delineation</li> <li>• CST Closure &amp; Removal</li> <li>• Fault Studies and Expansive Soils Investigations</li> <li>• Asbestos &amp; Lead Inspection</li> </ul> <p>Office 281-531-0909 Pager 713-217-8266 Mobile 281-808-8629 Fax 281-752-5138 tideenv@netropolis.net 11231 Richmond Ave. Suite D-603 Houston, Texas 77082</p>	<p><b>GEORGE N. MAY &amp; ASSOCIATES</b> Consulting Geologists and Paleontologists</p> <p><b>WILLIAM S. GRUBB</b></p> <p>201 HEYMANN BLVD. P. O. BOX 51858 LAFAYETTE, LA 70505</p> <p>OFFICE (337) 234-3379 FAX (337) 234-3389 HOME (337) 235-1923</p>



# Sproule

ASSOCIATES  
INC.  
Geological and Petroleum  
Engineering Consultants

Harry E. Saul, P.E.  
Manager, Houston Office

1000 Louisiana, Suite 3610  
Houston, Texas USA 77002  
Tel: (713) 652-5140 Fax: (713) 652-5143  
Cell: (281) 300-9251  
Email: harry.saul@sproule.com



## APPLIED BIOSTRATIGRAPHIX

Michael J. Nault  
717 East 8th Street  
Houston, Texas 77007  
Ph/Fax: 713-868-7444  
E-Mail: biostrat@aol.com

Complete Integrated Oil Field Paleontologic Services

## JAMES M. NORRIS CERTIFIED PETROLEUM GEOLOGIST



Field Studies/Field Value Enhancement  
Property Purchase Evaluations  
Workover/Drilling Recommendations

5222 Applevalle Court  
Kingwood, Texas 77345  
(281)-361-5981  
jmnor@aol.com



## GEHRIG SCHULTZ

Worldwide Business Development Manager

PGS Onshore, Inc.  
738 Highway 6 South  
Suite 900  
Houston, Tx 77079

Tel: (281) 589-8732  
Fax: (281) 886-1528  
Direct: (281) 679-2225  
Mobile: (713) 582-2779

E-mail: gehrig.schultz@pgsonshore.com



RICHARD B. BEVERLIN, JR.  
Certified Professional Geological Scientist  
Certified Petroleum Geologist  
Registered Environmental Professional

2138 Fenwood (281) 334-1629  
Kemah, Texas 77565 E-MAIL: beverlin@ix.netcom.com

## PADGETT EXPLORATION

Carl M. Padgett

Dianne B. Padgett

Consulting Geophysicists

800 Wilcrest Drive, Suite 225  
Houston, Texas 77042

Office: (713) 781-8139  
Res: (713) 784-1827



## THUNDER EXPLORATION, INC.

WALTER S. LIGHT, JR.  
PRESIDENT  
PETROLEUM GEOLOGIST

1710 BOLSOVER  
SUITE #1  
MAILING ADDRESS:  
P.O. BOX 541674  
HOUSTON, TEXAS 77254-1674

OFFICE: 713-529-2233  
CELLULAR: 713-823-8288  
FAX: 713-815-1447  
FAX/RESIDENCE: 713-522-4829  
EMAIL: WTHUNDER@AOL.COM



## THE SCOTIA GROUP, INC.

DOMESTIC AND INTERNATIONAL  
OIL AND GAS ADVISORY SERVICES

Reservoir Engineering  
Strategic Studies  
Reserves Evaluation  
Technology Applications

Reservoir Simulation  
Enhanced Recovery  
Geological Analysis  
M&A Evaluations

www.Scotia-Group.com

Houston: Gene Wiggins  
281.448.6188

Dallas: Dave Heather  
214.987.1042

## Robert L. Fleisher, Ph.D.

Biostratigraphy and Paleocology  
Planktonic and Benthic Foraminifera  
International and Domestic

1615 W. Clay  
Houston, TX 77019

(713) 520-0962  
forams@flash.net



STEVEN TEDESCO  
PRESIDENT

ATOKA GEOCHEMICAL SERVICES  
CORPORATION  
14550 E. EASTER AVE., STE. 1000  
ENGLEWOOD, COLORADO 80112

E-MAIL: atokageo@aol.com  
www.atoka.com

PHONE: 303-617-8919  
FAX: 303-617-8956  
1-800-853-5113



## Texas Petrographic Service Inc.

Polish / Thin Section

12520 Market Street  
Houston, TX 77015  
E-mail: rocks@ev1.net

Phone: (713) 330-1018  
Fax: (713) 330-8186  
www.texaspetrographic.com

## MICRO-STRAT INC.

Seismic Sequence Stratigraphic Analysis  
High Resolution Biostratigraphy  
Prospect and Block Evaluation  
International Training Center  
Geochemistry



Egypt • Indonesia • Malaysia • Nigeria • Venezuela

Bernard L. Shaffer, Ph.D.  
Calcareous Nannofossils

5755 Bonhomme  
Suite 406  
Houston, TX 77036-2013  
International

Off: 713/977-2120  
Fax: 713/977-7684  
Domestic

**SED-STRAT Geoscience Consultants, Inc**  
Clastics (Deep Water, Deltaic, Fluvial), Seismic Sedimentology,  
Reservoir Description, Sequence Stratigraphy, Basin Analysis  
and Framework Geology

George D. Klein, PhD  
(AAPG-DPA Certified Petroleum Geologist #5662)

14019 SW Frwy, Suite 301-#335 (281) 937-9436  
Sugar Land, TX, 77478, USA FAX: (281) 937-9456  
E-mail: gdkgeo@concentric.net

## PDS

• GEOLOGICAL • GEOPHYSICAL  
• LAND • AIRBRUSHING

Where drafting is an art

## PRECISION DRAFTING SERVICES

Cathy Tarte

5400 Bellaire Blvd., Suite E  
Bellaire, Texas 77401

Tel: (713) 660-8454  
Fax: (713) 666-9374  
e-mail: pdsmaps@airmail.net

## JIM THORPE PCI PALEO CONTROL, INC.

MICROPALAEONTOLOGY PALEOECOLOGY



P.O. BOX 41751  
HOUSTON, TEXAS 77241-1751  
OFFICE 713-849-0044 RESIDENCE 713-466-7922



## BIG "6" DRILLING COMPANY

7500 SAN FELIPE, SUITE 250  
HOUSTON, TEXAS 77063

CHESTER B. BENGE, JR.  
PRESIDENT

OFFICE: 713-783-2300  
FAX: 713-783-4463  
RES: 713-439-0803

CERT. PETR. GEOL. #4014 CERT. PETR. GPHY. #82 SPIES #1271

DEBORAH KING SACREY  
PRESIDENT

AUBURN ENERGY

8550 KATY FREEWAY  
SUITE 218  
HOUSTON, TEXAS 77024

OFFICE: 713-468-3260  
FAX: 713-468-3210  
MOBILE: 713-816-1817

E-MAIL: auburn@concentric.net



JOHN T. WALKER  
3D Sales

PGS Onshore, Inc.  
138 Hwy. 6 South  
Suite 900  
Houston, Texas 77079

Tel: (281) 589-6732  
Fax: (281) 589-6685  
Direct: (281) 679-2226  
Mobile: (281) 787-4274

E-mail: john.walker@pgsonshore.com

## E. H. STORK, Jr.

E. H. Stork, Jr. & Assoc.'s, Inc.  
Consulting Geologists & Paleontologists  
Specializing In

Biostratigraphy - Paleocology - Geologic Interpretation

207 Pecore St.  
Suite #2  
Houston, Texas 77009

Office (713) 802-9731  
Fax (713) 802-9732  
Home (713) 466-9064



## SPECTRA RESOURCES INC.

ROBERT H. BARTON  
PRESIDENT/CEO

11111 Wilcrest Green, Suite 211  
Houston, Texas 77042

(713) 974-6061  
FAX (713) 974-6461



## Prodigy Oil & Gas, LLC

Lee Higgins  
Vice President

433 E. Las Colinas Blvd.  
Suite 800  
Irving, Texas 75039  
Tele: 972/506-0909  
Fax: 972/123-1234

lhiggins@prodigyoilandgas.com



# ENERGY GRAPHICS

FOR DEPENDABLE DATA AND THE SOFTWARE TO MAKE IT WORK FOR YOU.

WWW.ENERGYGRAPHICS.COM



EXPLORATION DATA  
PRODUCTS & SERVICES  
INCLUDING

THE INTELLEX  
EXPLORATION  
SYSTEM

AN INTEGRATED  
SUITE OF SOFTWARE  
TOOLS SUPPORTING  
A NETWORK OF  
EXPERTLY MANAGED  
DATA.

**Comprehensive  
Software Products**  
Mapping & Data Mgmt. Software  
PC Reporting Software

**Custom Verified & Managed  
GOM Data Products**  
Leases-Wells-Pipelines  
Directional Surveys  
\*Texas State Waters Wells  
\*Fields & Reservoirs  
Mapping Culture

(\*New)

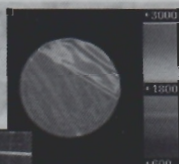


**ENERGY  
GRAPHICS, INC.**

ONE WOODBRANCH PLAZA  
12121 WICKCHESTER LN., #400  
HOUSTON, TX 77079  
PHONE (281) 558-2061

# PTS Labs

## CORE ANALYSIS SERVICES



### In-house Capabilities:

- CT Scanning for Core Orientation & Imaging
- Core Photo Printing
- Web Server
- Large Capacity for Routine & Advanced Core Testing (Pc, a, m & n, and Rel. Perm.)
- Wellsite Core Preservation and Stabilization
- NMR @ Temperature and Confining Stress
- Petrographic Services (XRD, SEM, and TS)
- Integrated Data Reports

### PTS Labs International, Inc.

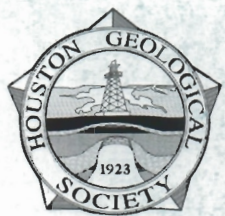
4342 West 12th Street  
Houston, Texas 77055

Phone: 713-680-2291

Fax: 713-680-0763

Website: www.ptslabs.com





# HOUSTON GEOLOGICAL SOCIETY

10575 Katy Freeway, Suite 290 • Houston, TX 77024

Periodicals  
U.S. Postage  
PAID  
Houston, Texas

## More than just a pretty facies

IRAP RMS\* models are the best looking in  
the business...and the smartest too!

Generated from an integrated toolbox of modules on UNIX™ and PC,  
IRAP RMS models capture reality, and save time and money.

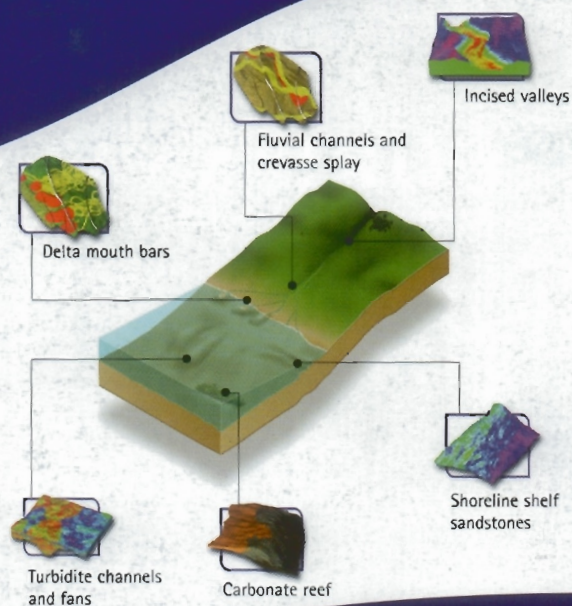
RMSgeoplex\* allows a blend of object, truncated gaussian and indicator  
modelling to ensure that you can model a reservoir to look the way you  
want it to look.

Add leading-edge structural and stratigraphic modelling tools,  
advanced simulation gridding and rescaling, and produce reliable  
simulation models again and again.

### IRAP RMS – workflow that works

Contact us to find out more

[www.roxar.com](http://www.roxar.com)



Roxar Houston, 2925 Briar Park Drive, Suite 1000, Houston, Texas 77042, USA  
Tel: +1 713 339 2626 [software@houston.roxar.com](mailto:software@houston.roxar.com)

\*Roxar product

**roxar** software  
solutions