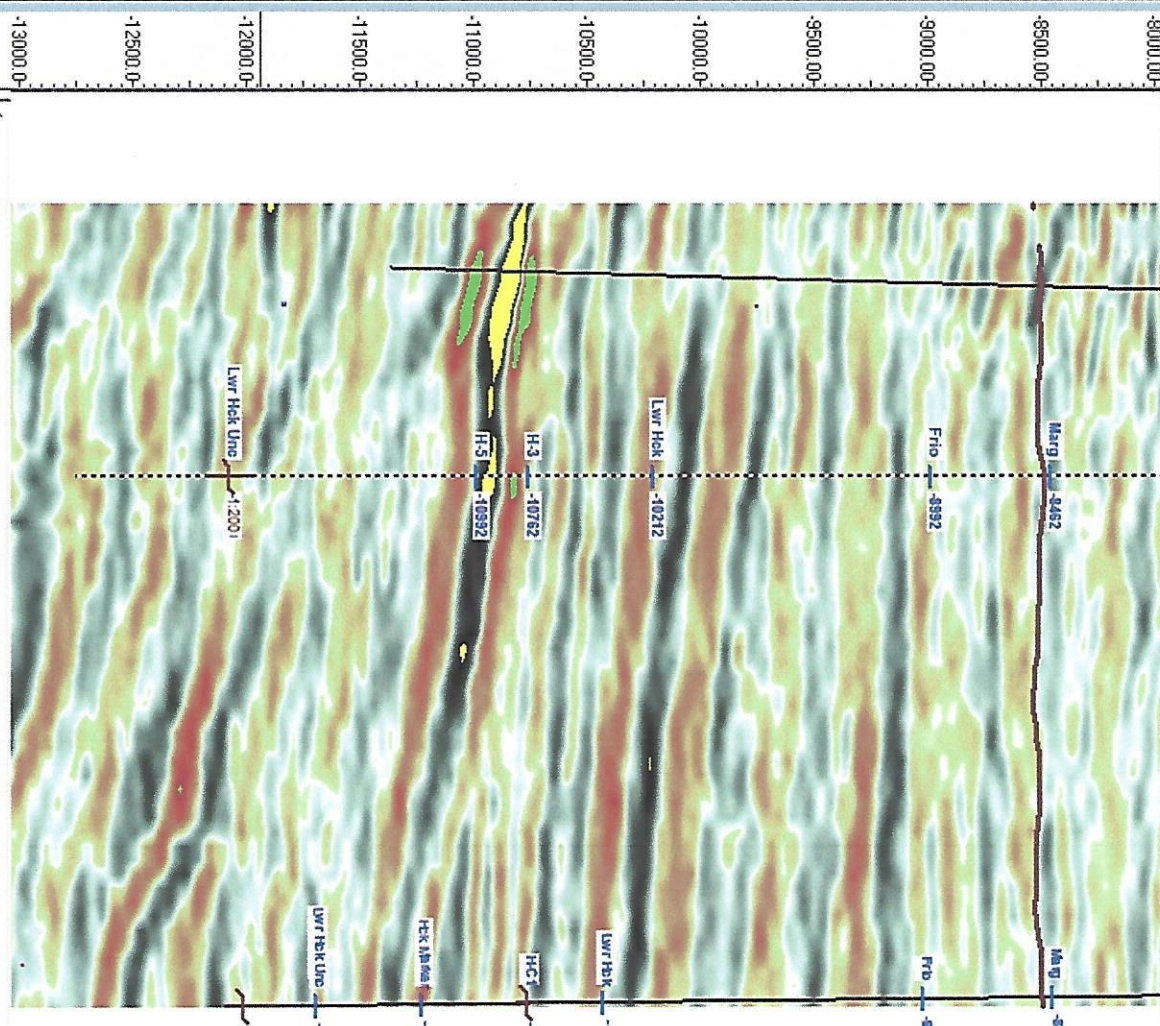


PROPOSED MASON & WILBANKS MICHIGAN TRUST 1

HEBERT HEIRBERBERT, HEIRS 1



Inline: 300 200.0 430 185.0 55.0 1700 68.0 157.0



X:355369.98, Y:770727.51 Feet, Lat:29°51'47.87033", Long:-94°52'33.34489", Inline:31.0, Crossline:199.0, D:-11997.00 (f), Dmohm Depth:4184.676, Panel 1, N