



Earth Science Week Field Trip Panther Creek near The Woodlands Montgomery County Preserve



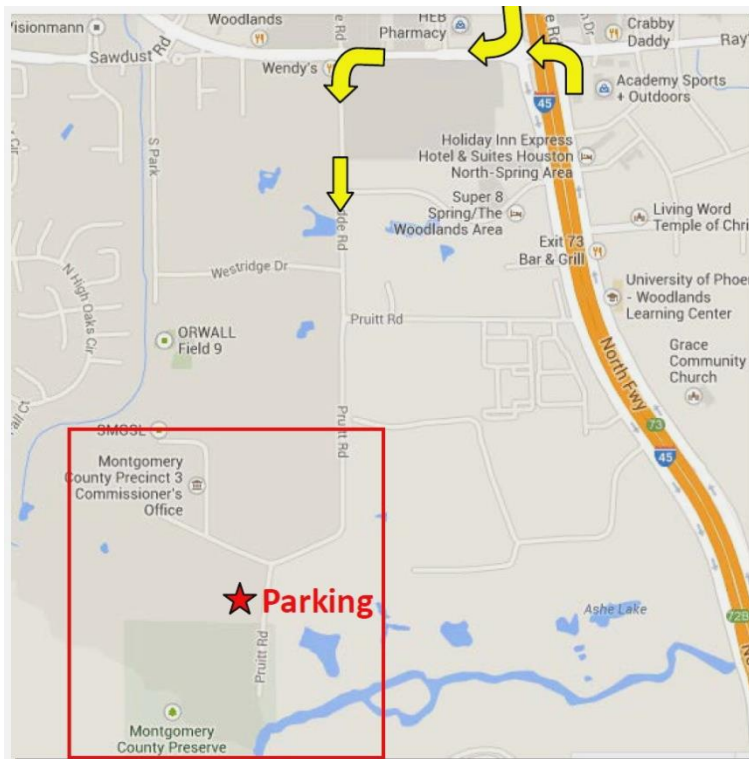
Sunday, October 16 (Arrive between 11:00 am - 3:00 PM)

Field Trip Leader: Erik Scott

Please visit the HGS Earth Science Week website for the latest details:

<http://www.hgs.org/committee?cmtegrp=sci&committee=Earth%20Science%20Outreach%20Committee>

Where: Meet at the parking lot as shown. Check in at the Headquarters table. You cannot miss it! Signs will be posted.



West on Sawdust Rd off of I 45. South on Budde Rd. It will become Pruitt Rd. Turn left at Montgomery County Preserve and look for the sign.

Navigate your car to **30.111469, -95.451976 (this is in decimal degrees)** and follow the signs. Google maps has an old picture. Headquarters is in the parking lot of the Clint Ivy Field. We have a three difficulty level field trip - WET (wade the knee deep river to get to the 3 stops, walking stick suggested), OFF the Road (walk through the forest to get to the river bank of the first stop), DRY (walk on a hard surface road to the last stop and look at the river from above). The WET trip will be fantastic, but you will need a change of clothes and shoes. Eric and Neal will be at the WET trip.

This is an OUTDOOR WALKING trip.

What to See: Geological stream processes on Panther Creek and how you would recognize them under the ground. We will see point bars, cut banks, sediment flow and structures, and log jams. Find out what a thalweg is. Bring a camera. There is nothing to collect.

Wildlife Experts: There will be bird, bug and plant watchers for you to talk to.

Services: No facilities on site.

Site Hazards: We will have people at the 3 stops at all times but parents and group leaders are responsible for their charges. This is a wild area so the usual hazards are mosquitoes, ticks, sun burn, and dehydration. Bring water and repellent. Water shoes or spares are a good idea. I expect the creek to be wet and the ground to be muddy. Prepare.

Preparation: The HGS website above will have a complete PDF guide to the site. Students under 18 must have a release form signed by a parent or guardian. Children must be accompanied at all times.