

WELSH PROSPECT

JEFFERSON DAVIS PARISH, LOUISIANA

First Production: 1962

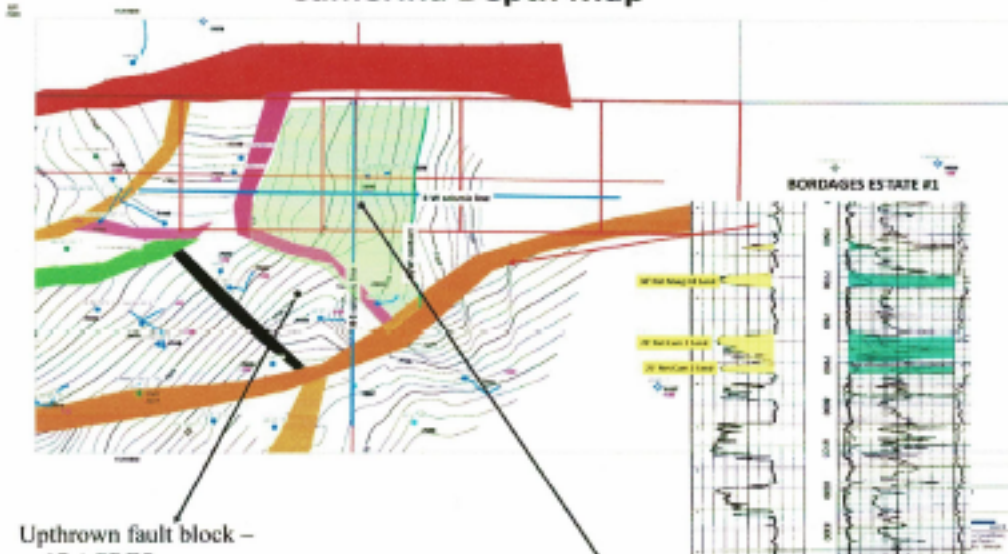
Cum Production:

Oil – 27,072,673 Barrels

Gas – 99,859,919 MCF

Water – 132,462,468 Barrels

Camerina Depth Map



Uprthrown fault block –
17 ACRES
CAMERINA I - PRODUCED
689,000 BARRELS OF OIL

REMAINING RECOVERABLE

Camerina I PUD 562,929 BO & 375 MMcf

Camerina II PUD 150,176 BO & 110 MMcf

Margh H II PUD 378,218 BO & 379 MMcf

Total 1,000,000 BO & 864 MMcf

**25% WI AVAILABLE
4Q/1Q SPUD**

CONTACT:

Del Mar Exploration
Wayne L. "Sandy" Rea, II
1306 Marshall Street
Houston, Tx 77006
O: 713-993-6453
C: 713-289-4267
waynerea@swbell.net

**EXPECTED FLOW RATE 300 BOPD
\$340,000 MONTHLY INCOME
5 MONTH PAYOUT**